

# AERVOE INDUSTRIES

## Product Catalog I



Industrial, Maintenance, and Construction Chemical Products





**AerVOE Industries Incorporated corporate  
offices and manufacturing facility in  
Gardnerville, Nevada**



**Company Profile** — AerVOE Industries is a leading manufacturer of paints, specialty coatings, cleaners, lubricants, and MRO chemicals for industrial use. With a 50-year track record packaging all types of formulations and containers, we are committed to quality chemical packaging and the proper representation, use, and design safety of all products under the AerVOE brand name. Production capacity, quality control, product development, and management experience combined with our operating philosophy helps keep our customers ahead of the competition.

One company with the power of multiple brands. AerVOE Industries is now a leader in providing professional products to the MRO distribution chain.

**Mission Statement** — “Our customers shall expect and receive products that have consistent quality, reliable performance, and be cost-effective. Product formulas, raw materials, and package forms shall be selected to provide the proper “tool” for the trade professional to do the job right the first time.”

- As a manufacturer we are committed to the highest ethical standards in customer relations.
- A documented price policy that ensures mutual profitability and a long-term partnership with our distributors based on integrity.
- Field sales support based on knowledge and training provided by salaried and dedicated sales representatives
- Operations conducted with maximum responsiveness, efficiency, and focused to the customers’ needs.
- Product development and improvements that define AerVOE as an innovator
- Providing leadership in user product safety and regulatory compliance while maintaining exceptional environmental standards.
- Operating a purchasing program that assures the most reliable supply standards.
- Maintaining exceptional facility housekeeping, safety, and environmental standards
- Conducting employee communications based on pride and respect

These efforts shall yield a knowledgeable and responsive sales force, consistent deliveries of profitable products that meet the toughest environmental standards, and the strength to grow and diversify, maintaining an edge for our customers within our market base.

**Customer Service** — AerVOE’s experienced, friendly Customer Service Representatives are assigned specific account responsibility to assure consistent, personalized service. Expedient response to orders allows us to consistently maintain one of the best shipping response times in the industry. Close teamwork among Customer Service, Accounting, and other administrative personnel enable the company to maintain the efficiency and responsiveness vital to our customer-oriented business.

**Product Management** — Product specialists are available to answer performance questions from basic application to complicated formulative issues. These individuals can assist in competitive evaluation problems based on direct experience with product testing protocol. In special situations, product and/or technical management personnel are available for field site visits to assist in problem solving.

**Quality Assurance** — AerVOE Industries manufactures and packages its own products. We take a direct, one-on-one approach to quality control with a staff of highly trained and qualified full time employees. In-house lab equipment includes computer color matching, accelerated shelf life testing, gas chromatograph analysis and much more.

**Environment** — AerVOE is the leader in providing quality products that meet the strictest environmental standards as set forth by the EPA, California’s CARB, European Union’s REACH program, and others. We are dedicated to eliminating greenhouse gases and carcinogens from products; and using materials that are produced in the same manner. Toluene and Xylene have been eliminated as a solvent in our product formulations. All aerosol cans are 100% recyclable and create fewer emissions in their manufacturing process. Packaging materials for all products have been reduced (plastic and cardboard) and selected for their recyclable properties. Our state-of-the-art facility meets or exceeds all regulatory, environmental, and safety standards. Jointly, our regulatory department and chemists work to stay ahead of all new regulation so we continue to produce quality, environmentally friendly products and expand water-based “green” product options.



# Table of Contents

**Paints and Coatings ..... 4**

Choice of colors in cost effective solutions for indoor and outdoor applications.

**Galvanized and Stainless Steel Coatings ..... 16**

Paints that provide the ultimate in protection against rust and corrosion as a primer or final coat.

**Marking Products ..... 20**

A complete line of inverted marking and coating paints and applicators.

**Striping Paint and Applicators ..... 26**

Specialty products for striping safety aisles and parking lots with crisp, long-lasting lines.

**M.R.O. Products ..... 28**

Necessary cleaners, lubricants, and other protective coatings for Maintenance, Repair, Operations.

**Mold Specialties ..... 46**

High quality mold specialties and release agents for molding operations.

**Shipping Essentials ..... 50**

Stencil and cover-up inks, and industrial-strength adhesives for shipping and receiving departments.

**Utility/Municipality Specialty Products ..... 51**

Outside plant maintenance products for utility and municipal applications.

**Delivery Systems ..... 54**

Applicators from small bottles to giant pressurized tanks make the application of Aervoe products economical and effective.

**Other Aervoe Markets ..... 56**

**Merchandising ..... 57**

Retail racks and counter shelves and header cards to display the entire Aervoe product line.

**Trade References ..... 58**

A succinct dictionary of industry terms and regulations can help you through the alphabetical clutter of purchasing.

**Numerical And UPC Product Index ..... 60**

Every Aervoe product and container has its own UPC number and they're all listed here.

**Customer Support Services ..... 63**

**User Guides**

Aerosol Paints and Coatings.....	19
APWA One-Call.....	24
Lubricants and Penetrants.....	36
Aerosol Cleaners.....	39
Mold Releases.....	49

# PAINTS AND COATINGS

AerVOE Paints and Coatings provide quality, cost-effective solutions for every application. Each product offers a wide choice of colors and is formulated for industrial and institutional applications. High gloss, high hide formulas provide superior performance, both indoors and outdoors, and insure uniform coverage in one application. Rust Proof, Supreme Color Shield, Fleet and Engine paint lines include OSHA safety, HVAC, and selected O.E.M. touch up colors. An excellent line of specialty coatings is also available for unique surface applications.

## SUPREME COLOR SHIELD™ PAINT

AerVOE's Supreme Color Shield coating is designed to provide superior appearance and color retention under mild or moderate conditions.

- Fast drying. Dries to touch in 15 minutes; dries to handle in 30 minutes
- High gloss, full hide coverage in one coat, with or without a primer
- Durable finish will not crack, chip or peel
- Provides excellent interior and exterior durability
- Ideal for metal parts fabrication, finish coat, and maintenance
- Performs well at temperatures up to 300°F (149°C)
- Not recommended for immersion services

**Uses:** Steel, metal, aluminum, wood, structural steel, drums, storage tanks, bar joists, steel pipes and railings, racks, conveyors, machinery, equipment, metal doors, ladders, fencing, cabinets, and furniture.



**CAN SIZE (NET)**  
20-ounce Aerosol (15 oz.)

**WEIGHT**  
8 lbs.

**CASE PACK**  
6 Cans

### COLOR SELECTION

5001 Aluminum	5012 Safety Red
5002 Silver	5013 Brite Red
5004 Safety Blue	5014 Sand*
5005 Light Blue	5016 Flat Black
5006 Safety Green	5017 Black
5007 Hunter Green	5018 Flat White
5008 Safety Yellow	5019 White
5009 Equipment Yellow	5020 Light Gray (ANSI-61)
5010 Safety Orange	5049 Meter Gray (ANSI-49)*
5011 Equipment Orange	5050 Padmount Green

\*Feature Spray-Any-Way valve

### GLOSS COMPARISON CHART



#### MILD ENVIRONMENTS

Outdoor weathering, mild industrial fumes and normal humidity with mold and mildew conditions.

#### MODERATE ENVIRONMENTS

Frequent fumes and spills of mild chemicals, occasional product spills, occasional chemical cleaning. Intermittent high humidity, moisture, mold, and mildew conditions.

#### SEVERE ENVIRONMENTS

Frequent fumes and spills of strong chemicals (acids, alkalis, and solvents), high humidity and moisture conditions. Frequent product spills and frequent chemical cleaning.



## SPEED E-NAMEL™

A high quality, fast-dry paint product for today's fast-paced customers. Dries to touch in 15 minutes! Prevents rust. A smooth, professional finish every time! For best results, use with Zynolyte Multipurpose Primers.

- Quick drying
- Rust preventive
- Apply to many substrates from metal and wood to plastic
- Hard finish

**USES:** Furniture, metal and wood railings, fences, bicycles, hobbies, crafts, plastic and metal garden accessories, cabinets, doors, patio items, wicker, tools, masonry, bulkheads, and thousands of other items.

### CAN SIZE (NET)

16-ounce Aerosol (11 oz.)

### WEIGHT

7 lbs.

### CASE PACK

6 Cans

### COLOR SELECTION

Z275 Semi-Gloss White	Z397 Gloss White	Z489 Light Gray
Z277 Semi-Gloss Black	Z407 Gold	Z506 Antique White
Z297 Persimmon	Z467 Lemon Yellow	Z516 Purple
Z298 Orange	Z468 Medium Gray	Z517 Rich Red
Z307 Acrylic Clear	Z469 Hunter Green	Z518 Pink
Z308 Silver	Z470 Bermuda Blue	Z519 Burgundy
Z317 Aluminum	Z471 Royal Blue	Z525 Kelly Green
Z357 Chocolate Brown	Z480 Beige	Z813 Red
Z377 Flat White	Z482 Almond	
Z387 Gloss Black	Z487 Flat Black	



## ZYNOLYTE® SPRAY PAINT

Quick drying, economical acrylic enamels that provide a tough, durable finish on most interior/exterior surfaces.

- Fast-drying, economical paints
- Can be used on a variety of surfaces, interior and exterior
- Ideal for most paint and touch-up projects

**Uses:** Can be used on wood, metal, aluminum, wrought iron, hard plastic, drywall, etc.

CAN SIZE (NET)	WEIGHT	CASE PACK
16-ounce Aerosol (10 oz.)	12 lbs.	12 Cans

### COLOR SELECTION

S180 Aluminum	S190 Gloss Black	S202 Sherwood Green
S182 Chocolate Brown	S191 Semi-Gloss Black	S205 Gray
S184 Fire Red	S192 Gloss White	S206 Clear
S185 Orange	S193 Semi-Gloss White	S220 Almond
S186 Flat Black	S196 Lemon Yellow	
S188 Flat White	S198 Malibu Blue	



## ZYNOLYTE® MULTIPURPOSE PRIMERS

High quality, non-lifting primer coatings for use on surfaces where good adhesion is needed before top/finish coat.

- Fast-drying; dries to touch in 10 minutes
- Tough, sealing primer coat
- Provides adhesion to non-painted surfaces to achieve maximum cohesion of final top coat
- Enhances the quality of any finish
- Bonds extremely well to bare metal surfaces
- Prevents rust and corrosion
- Fills in grain and surface imperfections when used on wood; seals surface

**Uses:** Metal or wood surfaces, including machinery, railings, electrical motors, presses, shop equipment, shelving, compressors, generators, bicycles, appliances, ladders, furniture, cabinets and automotive body parts.

CAN SIZE (NET)	WEIGHT	CASE PACK
16-ounce Aerosol (11 oz.)	7 lbs.	6 Cans
Gallon Can	27 lbs.	2 Gallons

### COLOR SELECTION

Z8070 Dark Gray	Z8076 White	Z8079 Yellow
Z8072 Gray	Z8077 Green	
Z8074 Red Oxide	Z8078 Black	

## ZYNOLYTE® SANDABLE SPRAY PRIMERS

Provides a smooth, rust-inhibitive base. This durable automotive primer is best for auto body and parts touchup, either sandable or non-sandable. For best results, use Zynolyte primers.

- Compatible with lacquers, acrylics, and enamels
- Superior sealing and filling properties for metal surfaces
- Use as primer and or finish coat
- Fast drying
- Lead-free
- 100% non-toxic when dry

**Uses:** Metal automotive bodies and parts.

CAN SIZE (NET)	WEIGHT	CASE PACK
16-ounce Aerosol (11 oz.)	6 lbs.	6 Cans

### COLOR SELECTION

Z1704 Gray
Z1706 Red Oxide



## ZYNOLYTE® HI-TEMP PAINT

Zynolyte Hi-Temp Paint is a flame and heat-resistant coating uniquely formulated to produce a lasting finish that is resistant to very high surface temperatures.

- Withstands temperatures up to 1200°F (538°C)
- Provides a fast drying, hard, durable finish
- Offers excellent rust and corrosion resistance as well as interior and exterior durability
- Designed for use on metal surfaces where excessive heat will cause regular paint to blister and crack
- Once cured, will not chip off, peel away, discolor or chalk

**Uses:** Engine manifolds, mufflers, incinerators, radiators, space heaters, barbecues and fireplaces, steam pipes, boilers, and furnaces.

CAN SIZE (NET)	WEIGHT	CASE PACK
16-ounce Aerosol (11 oz.)	7 lbs.	6 Cans

### COLOR SELECTION

Z630 Aluminum	Z642 Machinery Gray
Z635 Black	Z645 White

## ZYNOLYTE® APPLIANCE EPOXY PAINT

Zynolyte's tough porcelain-like finish for appliance and other metal surfaces provides a durable gloss finish that restores your appliances to a like-new appearance. It is great for use on refrigerators, washing machines, dryers, and other appliances, outdoor furniture, and garden equipment. Appliance Epoxy is fast-drying and lead-free.

CAN SIZE (NET)	WEIGHT	CASE PACK
16-ounce Aerosol (11 oz.)	7 lbs.	6 Cans

### COLOR SELECTION

Z1175 White
Z1176 Almond

## ZYNOLYTE® SUPER METAL COATINGS

Zynolyte Super Metal paint is a decorative and durable finish that provides the look of brilliant polished metals.

- Brilliant metallic finish
- Dries to the touch in 5 minutes
- Full dry in 2 hours
- Hard, permanent finish

**Uses:** Crafts and other interior projects such as decorations, ornaments, frames, toys, lamps, furniture, and decorative accessories.

CAN SIZE (NET)	WEIGHT	CASE PACK
16-ounce Aerosol (11 oz.)	7 lbs.	6 Cans

### COLOR SELECTION

Z160 Chrome
Z165 Copper
Z170 Gold
Z175 Brass

## ZYNOLYTE® FLUORESCENT COATING

Zynolyte fluorescent coating is made up of fluorescent particles that deliver color four times brighter than other spray paints.

- Available in an assortment of bright Day-Glo colors
- Increase visibility by up to four times; apply over white base coat for optimum brightness
- Provides maximum visibility and safety; total "glo" effect is obtained under black lights
- Can be used for both interior or exterior applications
- Dries to touch in minutes, full cure in 24 hours

**Uses:** Metal, wood, concrete, steel bars, safety aisle marking, machinery, signs, posters, emergency and safety equipment, OSHA hazards, production equipment, hobby models, toys, bicycles, sleds, and fly fishing lures. Ideal for engineering and survey painting of wood, stakes, and trees.

CAN SIZE (NET)	WEIGHT	CASE PACK
16-ounce Aerosol (11 oz.)	7 lbs.	6 Cans

### COLOR SELECTION

Z1415 Blue	Z1418 Red	Z1421 Hot Pink
Z1416 Green	Z1419 Red-Orange	Z1422 Orange
Z1417 Lemon Yellow	Z1420 Yellow-Orange	



## ENGINE ENAMEL

This fast drying, heat resistant paint is specially formulated to keep engine surfaces from pitting and rusting while maintaining color and a performance gloss finish.

- Specially made for refinishing engines and transmissions
- Withstands temperatures up to 500°F (260°C)
- Fast drying acrylic enamels match O.E.M. standards
- Excellent adhesion prevents rust, pitting, peeling, and checking
- Oil and gasoline resistant
- Provides superior durability and fade resistance under a variety of harsh conditions

**Uses:** Cast metal engine blocks, transmissions, pipes, radiators, farm and marine equipment, and other automotive and industrial equipment exposed to high temperatures.

CAN SIZE (NET)	WEIGHT	CASE PACK
16-ounce Aerosol (12 oz.)	7 lbs.	6 Cans

### COLOR SELECTION

510 Universal Clear	540 Alpine Green	568 Chrysler Blue
511 Universal White	550 Ford Red	570 Universal Silver
512 Flat Black	551 Ford Gray	575 Dull Aluminum
513 Satin Black	560 Ford Blue	580 Cummins Beige
514 Gloss Black	561 Chevrolet Blue	582 Cast Iron Gray
520 Chevrolet Orange	562 G.M. Blue	583 Steel Blast Gray
530 Cadillac Gold	566 Ford-Merc. Blue	

## CLEAR ACRYLIC COATINGS

Aervoe's clear acrylic coatings are made with non-yellowing, acrylic resins that provide superior finish retention over painted and non-painted surfaces.

- Forms a flexible, long-lasting coating
- Non-yellowing formula
- Superior gloss retention, both indoors and outdoors
- Clear film preserves and protects against rust, corrosion, and fading
- Fast lacquer dry; dries to touch in just 5 minutes
- Tough protective coating will not flake, chip or peel

**Uses:** Metal, motors, machine parts, tools, tool boxes, steel bars and railings, metal hoods, lamps, copper or brass bed frames and fixtures, conduit, ducts, artwork and drawings, and to seal chalk markings.

CAN SIZE (NET)	WEIGHT	CASE PACK
16-ounce Aerosol (12 oz.)	14 lbs.	12 Cans

### GLOSS SELECTION

117 Gloss  
120 Flat Matte

CAN SIZE (NET)	WEIGHT	CASE PACK
20-ounce Aerosol (15 oz.)	16 lbs.	12 Cans

### GLOSS SELECTION

6004 Klear Kote



## 145 STEEL RENEW

Steel Renew Stainless Steel Coating provides optimum resistance to weather, abrasion and corrosion. Protects metal, chrome, ceramic and copper surfaces.

- Contains 100% 316L stainless steel pigment
- Performs at temperatures up to 350°F (177°C)
- Creates a hard finish that is ideal for metal parts, equipment, and machinery
- Withstands high-pressure washdowns
- Resistant to UV, chemicals, oils, alkalis, food acids, and water

**Uses:** Structural steel, food processing and packaging equipment, metal parts, industrial equipment, tools, trailers, tanks, towers.

CAN SIZE (NET)	WEIGHT	CASE PACK
16-ounce Aerosol (13 oz.)	14 lbs.	12 Cans



## ROOF ACCESSORY & TRIM PAINT

This specialty coating is formulated for exterior use on roofing accessories. Provides long term protection against rust, corrosion and discoloration on roofing accessory materials.

- Excellent adhesion to galvanized steel
- Provides a professional coating on surfaces where brush application may be difficult
- Excellent adhesion to all metal, plastic, vinyl, wood and masonry surfaces
- Resistant to water, snow, UV exposure and other harsh outdoor conditions
- Superior durability, color fastness, high hide coverage
- Matched to O.E.M. color standards

**Uses:** Specifically designed for roof vents, flashing, valleys and other metal or plastic roofing accessories. Apply to metal, plastic, vinyl, wood, concrete and masonry.

CAN SIZE (NET)	WEIGHT	CASE PACK
16-ounce Aerosol (12 oz.)	14 lbs.	12 Cans
<b>COLOR SELECTION</b>		
<b>Composition Shingles</b>		
1601 Cedar	1606 Birchwood	1609 Rustic Black
1603 Rustic Brown	1607 Smoke	1610 Evergreen
1604 Driftwood	1608 Slate Gray	1612 Dark Brown
<b>Ceramic Tile</b>		
1613 Terra Cotta	1616 Adobe	1618 California Mission
1614 Golden Terra Cotta	1617 Casa Grande	1619 Desert Sage
<b>Metal Roof</b>		
1625 Bone White	1629 Colonial Red	1632 Sherwood Green
1626 Sierra Tan	1630 Regal Red	1633 Hartford Green
1627 Slate Gray	1631 Regal Blue	1634 Coppertone
1628 Sandstone		
<b>Metal Roof Touch-up Pens</b>		
1635 Bone White	1639 Colonial Red	1642 Sherwood Green
1636 Sierra Tan	1640 Regal Red	1643 Hartford Green
1637 Slate Gray	1641 Regal Blue	1644 Coppertone
1638 Sandstone		

## 1690 BLACK ASPHALT ROOF PRIMER

Asphalt Roof Primer is a quick drying, asphalt-based material designed for priming surfaces prior to application of hot-mopped or cold-applied asphalt coatings, roof cements, and asphalt-based roof and flooring adhesives. High penetrating qualities help assure a firm, tough bond.

- Excellent adhesion to concrete, wood, felt, gypsum, plastic, glass, and metal
- Forms a tough waterproof seal that will trap and encapsulate dust and other loose particles
- Creeps into cracks and crevices, then sets up and bonds to surfaces
- Provides rust proofing while filling surface pores
- Each application provides a smooth, even, protective film

**Uses:** Specially designed for metal edging and flashings, weathered (composition) roofing, concrete and masonry surfaces, and gypsum surfaces.

CAN SIZE (NET)	WEIGHT	CASE PACK
20-ounce Aerosol (15 oz.)	17 lbs.	12 Cans



## ANODIZED METAL & TRIM PAINT

Anodized Metal & Trim Paint is a fast drying, specialty pigmented coating that is used for the touch-up and installation of anodized and painted building components. This product is available in 5 of the most commonly used OEM colors. Durable color fastness, good hide and coverage. This product provides long-term protection against rust, corrosion, and discoloration of aluminum and metal materials.

- Excellent adhesion to all metal, wood, and masonry surfaces
- Exceptional resistance to water, sun (UV rays), snow, and other harsh environmental conditions
- Superior durability, while extending the life of all materials coated

**Uses:** Window and door frames, railings, gutters and other metal trim. Also excellent for the touch-up and installation of storefronts, fascia, and curtain walls.

CAN SIZE (NET)	WEIGHT	CASE PACK
16-ounce Aerosol (12 oz.)	13 lbs.	12 Cans
<b>COLOR SELECTION</b>		
1850 California Black Bronze	1857 Bronze (0810)	
1852 Dark Bronze	1860 White	

## 1645 ROOF TAR AND ADHESIVE REMOVER

A non-chlorinated, citrus-based roof tar and adhesive remover. Use also as a surface preparation prior to the use of adhesives by cleaning heavy oils, greases, silicones, and grime from the surface.

- Use as a surface prep
- Remove tar and other adhesive residue
- Citrus-based
- Leaves no film or residue

**Uses:** Preparation and cleanup of tar and other adhesives.

CAN SIZE (NET)	WEIGHT	CASE PACK
20-ounce Aerosol (15 oz.)	16 lbs.	12 Cans

## RUST PROOF ANY-WAY PAINT

A high quality industrial maintenance enamel coating formulated for light to moderate interior/exterior industrial exposures. This product offers lasting protection against corrosion, light abrasion, weathering, and mild chemical fumes.

- Adheres to any surface (even vinyl and plastic)
- Sprays in any direction
- VOC and MIR compliant
- High gloss, high-hide coverage that provides superior corrosion protection especially on metal surfaces
- Can be applied over sound rusted areas; however, loose flakes, dirt, grease, oils, and other surface contaminants or particles should be removed first with a wire brush or sandpaper
- Lead-free
- Primer is not required but recommended over bare steel

**Uses:** Non-galvanized metal, wood, hard plastic, and other common surfaces, including machinery, motors, tools, cabinets, toolboxes, steel bars and railings, pipelines, drums, conduit, ducts, furniture, electrical equipment. Ideal for marking hazard areas and color coding steel. Also effective on steel, concrete (masonry), and aluminum.

CAN SIZE (NET)	WEIGHT	CASE PACK
16-ounce Aerosol (12 oz.)	7 lbs.	6 Cans
1 Quart	10 lbs.	4 Quarts

### SOLVENT-BASED COLOR SELECTION

157 J.D. Green	306 Safety Black	318 Light Blue
167 Caterpillar Yellow (OLD)	307 Safety White	319 Royal Blue
168 Caterpillar Yellow (NEW)	308 Brite Red	320 Forest Green
178 School Bus Yellow	309 Aluminum	333 Dark Gray (ANSI-33)
300 Safety Purple	310 Silver*	342 Semi Flat Black
301 Safety Red	311 Gold	344 Satin Black
302 Safety Yellow	312 Flat Black	348 Meter Green
303 Safety Blue	313 Flat White	349 Meter Gray (ANSI-49)
304 Safety Green	314 Brown	361 Light Gray (ANSI-61)
305 Safety Orange	317 Tan	

\*310 Silver not available in bulk

## RUST PROOFING WATER-BASED PAINT

A high quality corrosion preventive coating formulated for mild to moderate interior/exterior, and industrial applications. This paint is designed to be self-priming and high gloss.

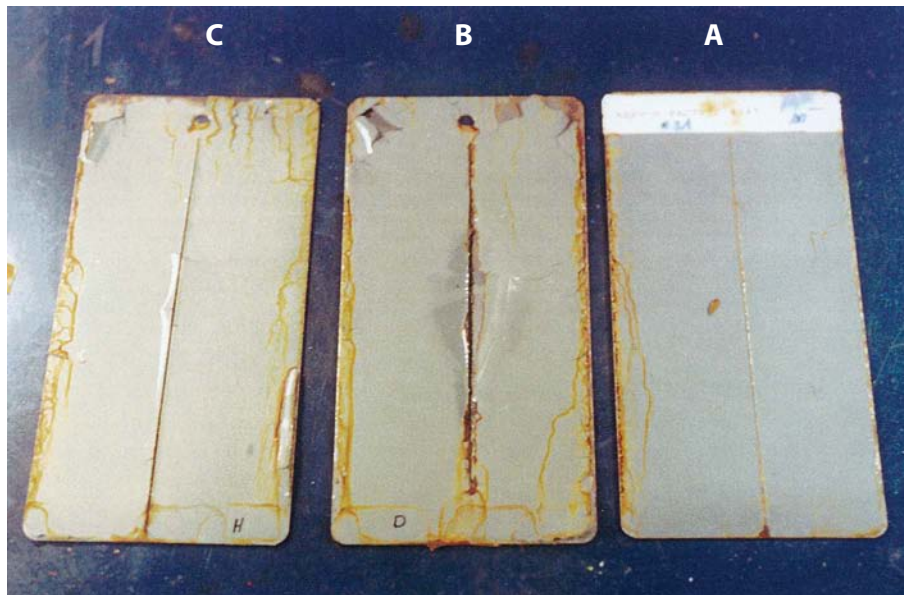
- High gloss, high-hide coverage that provides corrosion protection on metal surfaces
- Provides good resistance to moderate weather exposures including water, humidity, and temperatures up to 300°F (149°C), and color fading.
- Can be applied over firmly rusted areas; however, loose flakes or particles should be removed first with a wire brush or sandpaper
- Lead-free
- Primer is not required but recommended over bare steel

**Uses:** Metal, wood and other common surfaces, including non-porous plaster, machinery, motors, tools, cabinets, toolboxes, steel bars and railings, pipelines, drums, conduit, ducts, furniture, electrical equipment. Ideal for marking hazard areas and color coding steel and lumber. Also effective on steel, concrete (masonry), and aluminum.

CAN SIZE (NET)	WEIGHT	CASE PACK
16-ounce Aerosol (12 oz.)	7 lbs.	6 Cans

### WATER-BASED COLOR SELECTION

3010 Safety Red	3060 Safety Black	3160 Agri. Green
3020 Safety Yellow	3070 Safety White	3170 Agri. Blue
3030 Safety Blue	3120 Flat Black	3490 Meter Gray (ANSI-49)
3040 Safety Green	3130 Flat White	
3050 Safety Orange	3150 Agri. Red	



Scribed Q-panels below represent independent salt spray test results conducted by a national testing laboratory.

Product tested was AerVOE Industries Rust Proofing Water-based Paint (panel A), and two other nationally-recognized brands (panel C = Brand H), and (panel B = Brand D). Results shown are after 96 hours of salt spray testing.

Salt spray testing according to ASTM B117 Test Method of Salt Spray (Fog) Testing.

## DIRECT TO METAL – Solvent- or Water-Based

Aervoe's high-performance Direct To Metal (DTM) solvent-based and water-based formulations withstand corrosion and exposure from mild to moderate conditions while maintaining high gloss levels. Wide color selection includes **OSHA** safety, **HVAC**, commercial and selected factory equipment touch up colors.

- High gloss, high solids formula
- Ideal for equipment touch up and OEM production applications indoors or outdoors
- Resistant to mild and moderate environments including intermittent exposure to water, salt spray, moisture and temperatures up to 300°F (149°C)
- Can be applied directly over sound rust areas; however loose flakes, dirt, grease, oils, and other surface contaminants or particles should be removed first with a wire brush or sandpaper
- Tough, protective coating will not chip or peel
- Provides excellent hiding characteristics with smooth, even coverage
- Water-Based DTM may be used as a top coat on galvanized surfaces\*
- Solvent-Based DTM is unacceptable as a top coat over galvanized surfaces\*
- Not recommended for immersion services

**Uses:** Non-galvanized metal\*, wood and other common surfaces, including machinery, motors, tools, cabinets, toolboxes, steel bars and railings, pipelines, drums, conduit, ducts, furniture, electrical equipment. Ideal for marking hazard areas and color coding steel.

CAN SIZE (NET)	WEIGHT	CASE PACK
Gallon Can	21 lbs.	2 Gallons
5-Gallon Pail	51 lbs.	1 Pail
55-Gallon Drum	517 lbs.	1 Drum

### SOLVENT-BASED COLOR SELECTION

300G Safety Purple	307G Safety White	320G Forest Green
301G Safety Red	308G Brite Red	322G Equipment Orange
302G Safety Yellow	309G Aluminum	344G Satin Black
303G Safety Blue	312G Flat Black	348G Meter Green
304G Safety Green	317G Tan	349G Meter Gray (ANSI-49)
305G Safety Orange	318G Light Blue	361G Light Gray (ANSI-61)
306G Safety Black	319G Royal Blue	

CAN SIZE (NET)	WEIGHT	CASE PACK
Gallon Can	21 lbs.	2 Gallons
5-Gallon Pail	51 lbs.	1 Pail
55-Gallon Drum	535 lbs.	1 Drum

### WATER-BASED COLOR SELECTION

3010G Safety Red	3050G Safety Orange	3130G Flat White
3020G Safety Yellow	3060G Safety Black	3490G Meter Gray (ANSI-49)
3030G Safety Blue	3070G Safety White	
3040G Safety Green	3120G Flat Black	



**OSHA Colors** - The Occupational Safety and Health Act (OSHA) stipulates that industrial plants provide color coded safety equipment and hazard areas. The following list identifies the OSHA-designated colors and their meaning.

Application	Marking Color	Aervoe Product
Radiation hazard	OSHA Purple	300
Danger, or stop, or location of fire protection equipment	OSHA Red	301 3010 5012
Caution and physical hazards	OSHA Yellow	302 3020 5008
Equipment being repaired. Caution against starting or moving	OSHA Blue	303 3030 5004
Location of safety equipment other than fire	OSHA Green	304 3040 5006
Dangerous parts of machinery or energized equipment	OSHA Orange	305 3050 5010
Traffic and housekeeping	OSHA Black	306 3060 5017
Traffic and housekeeping	OSHA White	307 3070 5019

**NOTE:** OSHA and HVAC colors apply to both aerosol Rust Proofing Paint, and bulk Direct To Metal (DTM) Paint.

**HVAC Colors** - Color designations are currently used by DuPont for its refrigerants. Although refrigerant manufacturers make a concerted effort to select colors to differentiate refrigerant types, color guidelines are not a substitute for reading cylinder labels and markings. Aervoe suggests the following refrigerant colors be used for coding.

Refrigerant	Marking Color	Aervoe Product
R502	Purple	300
R22	Light Green	304/3040/5006
R404A	Orange	305/1305/3050/5010
R409A	Tan	317/5014
R134A	Light Blue	318/5005

## MILITARY VEHICLE & RECREATION CAMO PAINT

A durable, high-hide acrylic enamel that offers the unique visual characteristics of true camouflage cover if blended in U.S. military color patterns.

- Dries to tough, hard finish, resists corrosion & abrasion
- Will not chip or peel under harsh conditions
- Performs at temperatures up to 300°F (149°C)
- Designed to U.S. Military Designated Field Coloring standards and 595 Federal Color Specifications
- Not recommended for immersion services

**Uses:** Ideal for military vehicle restoration, and duck blinds. Apply to metal or wood surfaces as top or final coat where an earth-toned finish is desired.

CAN SIZE (NET)	WEIGHT	CASE PACK
16-ounce Aerosol (12 oz.)	7 lbs.	6 Cans

### COLOR SELECTION

951 Light Green (34151)	987A Olive Drab (34087)
952 Dark Green (34102)	987B Olive Drab (34088)
957 Earth Yellow (30257)	988 Black (37038)
967 Earth Red (30117)	990 Woodland Green (34094)
968 Field Drab (30118)	992 Marine Corps Green (34052)
975 White (37875)	997A Olive Drab Semi-gloss (24087)
977 Sand (30277)	997B Olive Drab Semi-gloss (24088)
979 Forest Green (34079)	999 Earth Brown (30099)

## MILITARY DIGITAL PATTERN CAMO PAINT

This durable, matte finish, acrylic enamel is specially formulated to match current U.S. Army (ACU) and U.S.M.C (MARPAT) color standards for digital camouflage patterns.

- Meets color specs for ACU and MARPAT uniform standards
- Long lasting, non-reflective finish
- Dries to tough, hard finish, resists corrosion & abrasion
- Will not chip or peel under harsh conditions
- Performs at temperatures up to 300°F (149°C)
- Stencils also available
- Not recommended for immersions services

**Uses:** Apply to metal, wood, or fabric surfaces. Ideal for weapons, vehicles, hunting equipment, and clothing.

CAN SIZE (NET)	WEIGHT	CASE PACK
16-ounce Aerosol (12 oz.)	7 lbs.	6 Cans

### COLOR SELECTION

1074 Green (474)	1078 Urban Tan (478)	1082 Desert Sand (500/503)
1075 Khaki (475)	1079 Light Tan (479)	1083 Urban Gray (501/505)
1076 Coyote (476/498)	1080 Highland (480)	1084 Foliage Green (502/504)
1077 Black (477)	1081 Light Coyote (481)	

## HUNTING LANDS CAMO PAINT

The same durable paint as the Military Vehicle and Recreation Camo and Military Digital Pattern Paint, but in colors designed for the sportsman in four very different geographical settings.

**Choose from:**

- Timberland for a woodland look
- Upland for a high desert look
- Forestland for a forest look
- Marshland for a marshland look

**Uses:** Apply to metal, wood, or fabric surfaces. Ideal for hunting equipment, guns, bows, treestands, blinds, tents, camping equipment, clothing, photography, equipment, boats, ATVs, and other vehicles.

CAN SIZE (NET)	WEIGHT	CASE PACK
16-ounce Aerosol (12 oz.)	7 lbs.	6 Cans

### COLOR SELECTION

1085 Fall Gold	1092 Brush Brown
1086 Cattail Brown	1093 Brush Green
1087 Moss Green	1094 Bark Gray
1088 Sand	1095 Black
1089 Clay	1096 Sage
1090 Acorn	1097 Sage Gray
1091 Leaf Green	1098 Buck Brush
	1099 Tan



## CAMOUFLAGE KITS AND STENCILS

Kits and stencils are available to create custom camo looks. Each kit includes 6 cans of paint, and comes with or without stencils.



### MILITARY DIGITAL PATTERN CAMO KITS

Each kit is specifically designed with color selections to match U.S. Army ACU and U.S.M.C. (MARPAT) color configurations.

#### 903 DIGITAL STENCIL KIT

Create your own digital pattern using laser cut digital stencils and AerVOE Military Digital Pattern Camo Paint. Kit includes small and medium size patterns with an adhesive backing for a clean application to your project, and a 12" x 20" Mylar® stencil.

### HUNTING LANDS CAMO KITS

Four kits are available in different geographic color configurations. Choose a kit to fit Marshland, Timberland, Upland, or Forestland settings.

#### 910 HUNTING LANDS STENCIL KIT

- Includes four reusable Mylar® stencils
- 1 - 12" x 10" Bark and Marsh Grass
  - 2 - 12" x 12" Leaves and Twigs

#### 911 CAMOLAND STENCIL KIT

- Includes two reusable Mylar® stencils to create an effective break-up pattern for any terrain.
- 2 - 12" x 12"

#### 912 UPLAND STENCIL KIT

- Includes three reusable Mylar® stencils.
- 3 - 12" x 12" Field Grass, Sage, and Twigs

**900 ACU Digital Kit** includes 2 ea #1082, #1083, and #1084;

**900A** = 900 + digital stencil kit

**901 MARPAT Woodland Digital kit** includes 2 ea #1074 and #1076, 1 ea #1075, and #1077; **901A** = 901 + digital stencil kit

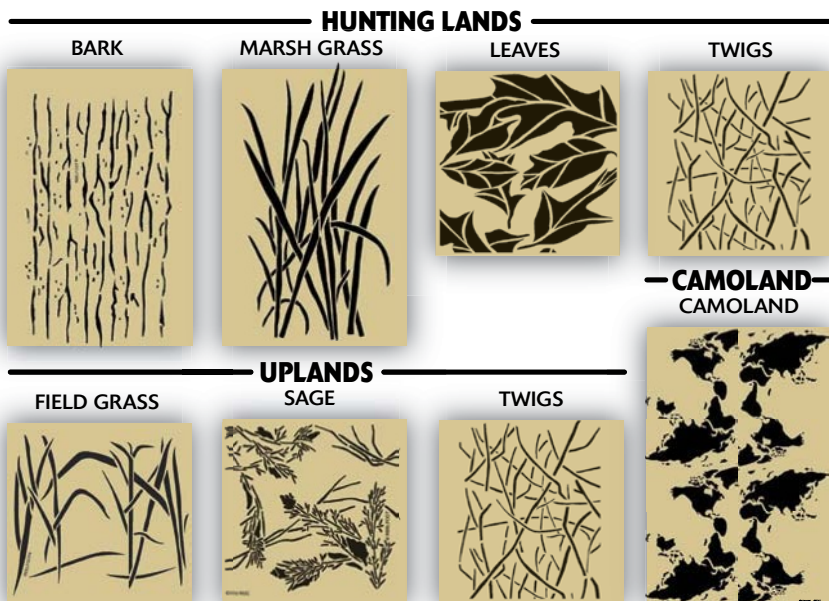
**902 MARPAT Desert Digital Kit** includes 2 ea #1078 and #1079, 1 ea #1080, and #1081; **902A** = 902 + digital stencil kit

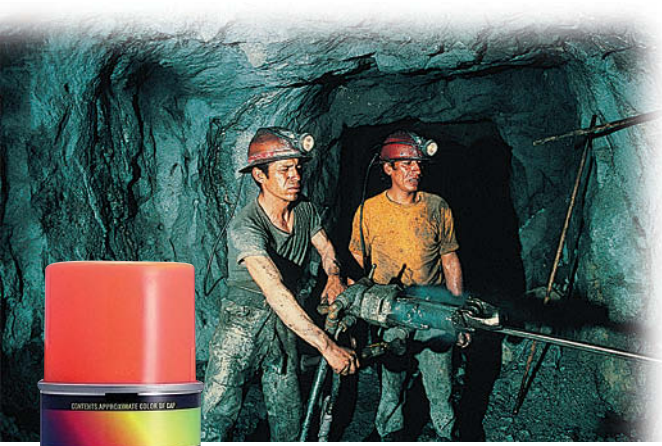
**904 Marshland Kit** includes 2 ea #1085, and 1 ea #1086, #1087, #1088, and #1089; **904A** = 904 + Hunting Lands Stencil Kit; **904B** = 904 + Camoland Stencil Kit

**905 Timberland Kit** includes 1 ea #1090, #1091, #1092, #1093, #1094, and #1095; **905A** = 905 + Hunting Lands Stencil Kit; **905B** = 905 + Camoland Stencil Kit

**906 Upland Kit** includes 1 ea #1085, #1087, #1096, #1097, #1098, and #1099. **906A** = 906 + Upland Stencil Kit; **906B** = 906 + Camoland Stencil Kit

**907 Forestland Kit** includes 2 ea #1091 and #1092, and 1 ea #1093 and #1095; **907A** = 907 + Hunting Lands Stencil Kit; **907B** = 907 + Camoland Stencil Kit





## MINE MARKING PAINT

Aervoe's upright marking paint is a highly pigmented, durable paint designed specifically for overhead marking.

- Sprays upright with or without cap on.
- May be applied by hand or in Aervoe's #244 Spot Marker
- Does not contain ozone depleting substances, lead, CFCs, chromates or chlorinated solvents
- Low flash, low odor
- Mark is water resistant after dry
- Non-clogging; contents empty completely
- Fast drying, highly visible colors

**Uses:** Overhead marking in mines, on bridges, building construction or any application requiring overhead marking.

### CAN SIZE (NET)

20-ounce Aerosol (17 oz.)

### WEIGHT

18 lbs.

### CASE PACK

12 Cans

### COLOR SELECTION

- 195 Fl. Red-Orange
- 196 Fl. Red
- 197 Fl. Orange
- 198 Fl. Green

## 156 REBAR GREEN EPOXY COATING

A high performance, single system epoxy coating specifically designed to protect rebar from corrosion and other damage. Use to touch-up and repair the original factory coating or bare rebar. May also be used on other approved steel surfaces.

- Meets ASTM D3963, A775, and D3963M-01 specifications
- Prevents rust, corrosion, and the resulting stains when applied to rebar before setting in concrete
- Fast drying, durable finish
- Excellent color retention
- Adheres to all surfaces with very good resistance to corrosion, chemicals, gasoline, and abrasion
- Prevents oxidation with touch up of sheared ends, cuts and other exposed areas
- Performs at temperatures up to 300°F (149°C)

**Uses:** Rebar, metal, steel, and metal support reinforcement beams.



### CAN SIZE (NET)

16-ounce Aerosol (12 oz.)

### WEIGHT

14 lbs.

### CASE PACK

12 Cans



## TREE MARKING PAINT

Specially formulated, long lasting, lead-free solvent-based paints that meet all marking requirements of the forestry industry. Tracer element available for government agencies on special order basis.

- Regular and fluorescent colors available
- Does not contain lead, Toluene, or Methylene Chloride
- Fast drying high solids formula
- Excellent for horizontal numbering, lettering or writing
- Excellent adhesion and visibility
- Ideal for inventory and lumber identification marking of cut wood, trees, logs, railroad ties, pulpwood, and finished lumber
- Heavily pigmented to provide bright visual identification at distances

**Uses:** Mark cut wood, trees, logs, railroad ties, pulpwood and finished lumber for grade and select cut marking.

CAN SIZE (NET)	WEIGHT	CASE PACK
16-ounce Aerosol (12 oz.)	14 lbs.	12 Cans
Quart Can	27 lbs.	12 Quarts
Gallon Can	23 lbs.	1 Gallon

### COLOR SELECTION

610 Red	650 Blue	688 Fl. Green
620 Orange	660 Black	690 Fl. Red
630 Yellow	670 White	691 Fl. Pink
640 Green	680 Silver	692 Fl. Orange-Red
645 Dark Green	681 Purple	693 Fl. Yellow

## WET COAT® TREE MARKING PAINT

- For use in wet and/or during rainy conditions
- Mixes with the water from wet wood allowing paint to penetrate deep into pores of lumber
- Displaces moisture while the film is formed to penetrate and adhere to the surface
- Remaining mark is highly visible and will withstand subsequent and continued immersion in water
- Provides long lasting identification on natural bark or cut lumber

**Uses:** In either wet or dry conditions, apply directly to bark, trees, cut wood, railroad ties, logs, pulpwood and finished lumber for grade and select cut marking.

CAN SIZE (NET)	WEIGHT	CASE PACK
16-ounce Aerosol (12 oz.)	14 lbs.	12 Cans

### COLOR SELECTION

694 White	697 Red	699 Yellow
695 Blue	698 Orange	

**NOTE:** Tracer paint available on a special order basis for government agencies. Minimum 50-gallon yield production. Special quote required.

# GALVANIZED AND STEEL COATINGS

Aervoe galvanize coatings and stainless steel paints provide the ultimate in long term protection against rust and corrosion available today. They are acceptable as a coating in federally inspected meat and poultry plants for application to structural surfaces, or any surface where incidental food contact may occur. Crown galvanize coatings have been the industry benchmark for over 50 years... products that "sacrifice" the coating to chemically protect steel.



## PREMIUM GALVANIZE COATINGS

### 7007 COLD GALVANIZE COATING 93% ZINC RICH

The leader in the industry in corrosion prevention. Can be easily sprayed, brushed, or dipped onto any metal surface. Its zinc-rich formula is designed for permanent protection.

- 93% pure zinc in dry film
- Meets performance requirements of MIL-P-46105(MR), MIL-P-21035B, and DOD-P-21035A
- Withstands 2000 hours of 5% salt spray testing (ASTM B-117)
- Light gray, matte finish
- Zinc sacrifices itself to protect the base metal surface
- Provides protection equal to or better than hot-dipped galvanizing
- Outstanding weld-through primer

**Uses:** Industrial type applications such as aviation, marine, manufacturing, etc.

### 7008 BRIGHT GALVANIZE COATING 65% ZINC RICH

A restorative coating fortified with zinc for preventing rust and corrosion on ferrous metal surfaces with one coat application.

- A glistening coating with 65% pure zinc in dry film
- Stops rust and corrosion on any iron or steel surface for protection equal to or better than hot-dipped galvanizing
- Restores galvanized surfaces to the bright look of hot-dipped galvanizing
- Meets performance requirements of ASTM A-780-93A
- Good film integrity after 336 hours salt spray (ASTM B-117)

**Uses:** Repair of welds, handrails, rims, guardrails, metal chain fences, pipes, corrugated metal building, or anywhere the bright look of hot-dipped surfaces is desired.

**CAN SIZE (NET)**  
16-oz. Aerosol (13 oz.)  
½ Pint Can  
Quart Can  
Gallon Can

**WEIGHT**  
14 lbs.  
21 lbs.  
13 lbs.  
25 lbs.

**CASE PACK**  
12 Cans  
12 Quarts  
4 Quarts  
1 Gallon

**CAN SIZE (NET)**  
16-oz. Aerosol (13 oz.)  
Quart Can  
Gallon Can

**WEIGHT**  
14 lbs.  
13 lbs.  
13 lbs.

**CASE PACK**  
12 Cans  
4 Quarts  
1 Gallon





**7007VG LOW VOC COLD GALVANIZE COATING  
93% ZINC RICH**

A low VOC version of our Cold Galvanize Coating with a VOC content of less than 100 g/l. An exceptionally smooth flowing, high-solids compound that provides a fast drying coating to protect ferrous metals in highly corrosive environments. Zinc fuses to metal substrates for protection equal to or better than hot-dipped galvanizing. The sacrificial anodization causes the zinc to sacrifice itself for the base metal's protection. Stops rust and corrosion on any steel or iron surface.

- Contains 97% pure zinc
- Yields 93% zinc in a dry film
- Meets multiple performance requirements of ASTM, MIL, and DOD specifications (see product data sheet for details)
- Performs at temperatures up to 150°F (65°C)
- Withstands up to 2,000 hours salt spray exposure

**Uses:** Use on damaged galvanized surfaces, structural steel, automobiles, guardrails, bridges, TV and radio towers, welded joints, storage tanks, signs and signposts, equipment, gutters, pipelines, transformers, and corrugated metal buildings.

**CAN SIZE (NET)**  
Gallon Can

**WEIGHT**  
20 lbs.

**CASE PACK**  
1 Gallon

**7008VG LOW VOC BRITE GALVANIZE  
65% ZINC RICH**

A low VOC version of our Brite Galvanize Coating with a VOC content of less than 250 g/l. Provides a restorative coating fortified with zinc for preventing rust and corrosion on ferrous metal surfaces.

- A glistening coating with 65% pure zinc in dry film
- Stops rust and corrosion on any iron or steel surface for protection equal to or better than hot-dipped galvanizing
- Restores galvanized surfaces to the bright look of hot-dipped galvanizing
- Meets performance requirements of ASTM A-780-93A
- Good film integrity after 336 hours salt spray (ASTM B-117)

**Uses:** Repair of welds, handrails, rims, guardrails, metal chain fences, pipes, corrugated metal building, or anywhere the bright look of hot-dipped surfaces is desired.

**CAN SIZE (NET)**  
Gallon Can

**WEIGHT**  
20 lbs.

**CASE PACK**  
1 Gallon





## MRO/INDUSTRIAL GALVANIZE COATINGS

### 147 MRO COLD GALVANIZE COATING

This MRO Cold Galvanize Coating is a cost effective zinc spray coating that imparts temporary zinc protection in the weld through process from fabrication, to maintenance, and repair. Even at one coat, interim protection is provided if the surface is scratched or broken, an electrochemical reaction (sacrificial anodization) causes the zinc to sacrifice itself for the base metal's protection.

- 97% pure metallic zinc dust with 93% zinc in dry film
- Acts as metallic primer and can be final protective coating at 1 - 2 mil thickness
- If moisture is present, zinc will corrode but it will continue to protect the metal surface
- An economical coating for preventive maintenance on galvanized parts and with multiple coats for longer-term protection
- Meets multiple ASTM and MIL specifications (see product data sheet for details)
- Acceptable as a coating in federally inspected meat and poultry plants for application to structural surfaces where there is a possibility of incidental food contact

**Uses:** This hard coating acts as a metallic primer for iron, steel, and their welds to provide interim protection during the work process. Use on weld points, damaged galvanized surfaces, structural steel, automobiles, guard rails, bridges, TV and radio towers, storage tanks, signs and sign posts, equipment, gutters, pipelines, transformers, and corrugated metal buildings.

**CAN SIZE (NET)**  
16-oz. Aerosol (12 oz.)

**WEIGHT**  
13 lbs.

**CASE PACK**  
12 Cans

### 143 MRO CHROME GALVANIZE COATING

A reflective, chrome coating that provides the benefits of zinc flake and the properties of chrome.

- Convenient application when hot-dip repair is necessary
- Fast drying; dries to touch in 10 minutes
- Restores galvanized surfaces to a bright chrome finish
- For best corrosion protection use as top coat over 147 or 148, when chrome look is desired

**Uses:** On pipes, heavy equipment, highway guardrails, handrails, bridges, metal fences, storage tanks, metal buildings, transformers, television towers, signs and sign posts, railroad equipment, and over welds, or anywhere a chrome finish is desired.

**CAN SIZE (NET)**  
16-ounce Aerosol (12 oz.)

**WEIGHT**  
14 lbs.

**CASE PACK**  
12 Cans

### 148 MRO BRITE GALVANIZE COATING

Brite Galvanize Coating is an effective way to repair hot-dip galvanizing that has been damaged by abrasion, scratching, cutting or welding. Cosmetically repairs both ferrous and non-ferrous surfaces with one coat interim protection or multiple coats for longer-term protection.

- 97% pure zinc metallic flake with 65% zinc in dry film
- Zinc fuses to metal substrate
- Restores surfaces to the bright look of hot-dip
- Stops rust and corrosion on any iron or steel surface
- Will continue to protect against corrosion even if scratched
- Does not contain lead, chromates, methylene chloride or fluorocarbons
- Meets performance requirements of ASTM A780-01
- Acceptable as a coating in federally inspected meat and poultry plants for application to structural surfaces where there is a possibility of incidental food contact

**Uses:** Use on pipes, heavy equipment, highway guard rails, hand rails, welds, metal chain fences, bridges, storage tanks, corrugated metal buildings, transformers, television towers, signs and sign posts, railroad equipment, construction equipment, and anywhere the bright look of hot-dipped surfaces is desired.

**CAN SIZE (NET)**  
16-oz. Aerosol (12 oz.)

**WEIGHT**  
13 lbs.

**CASE PACK**  
12 Cans



# AEROSOL PAINTS, GALVANIZING, AND STEEL COATINGS USER GUIDE

AERVOE PRODUCT	BASE MATERIALS	INTERIOR DURABILITY	EXTERIOR DURABILITY	RECOAT WINDOW	DRY TIME TO TOUCH	FULL CURE	CORROSION RESISTANCE	GLOSS	GASOLINE RESISTANCE	MOTOR OIL RESISTANCE	VOC CONTENT	MIR CONTENT
Supreme Color Shield Paint	Acrylic Modified Alkyd	Excellent	Excellent	Before 2 hrs. or after 72 hrs.	15 min.	72 hrs.	Very good alone: excellent with primer	High	Poor	Good	60 to 80%	*A
Speed E-Name	Acrylic VT Alkyd	Excellent	Excellent	Before 2 hrs. or after 72 hrs.	15 min.	72 hrs.	Very good alone: excellent with primer	High	Poor	Good	60 to 80%	*A
Zynolyte Spray Paint	Acrylic VT Alkyd	Excellent	Excellent	Before 2 hr. or after 72 hrs.	15 min.	72 hrs.	Good alone, Excellent with primer	High	Poor	Good	60% to 80	*A
Rust Proofing Any-Way Spray Paint	Acrylic Alkyd Enamel	Excellent	Very Good	Before 2 hrs. or after 72 hrs.	15 min.	72 hrs.	Very good alone: excellent with primer	High	Poor	Good	60 to 80%	*A
Rust Proofing Paint Water Based	Styrene/Acrylic Latex	Excellent	Excellent	Before 2 hr. or after 72 hrs.	30 min.	72 hrs.	Very good alone: excellent with primer	High	Good	Good	60 to 65%	*A
Engine Paint	Short Oil Alkyd	Excellent	Excellent	Before 3 hr. or after 72 hrs.	15 min.	72 hrs.	Good alone: excellent with primer	High	Good	Very Good	60 to 80%	*A
Multipurpose Primer Paint	Phenolic Alkyd Enamel	Excellent	Good	Anytime	10 min.	24 hrs.	Good	Low	Fair	Good	<60%	1.20
Sandable Spray Primer	Acrylic Alkyd	Good	Good	After 48 hrs.	10 min.	48 hrs.	Not applicable	Flat	Fair	Good	<66%	1.20
Clear Acrylic Coatings Gloss / Kleer Kote	Acrylic Lacquer	Excellent	Good	After 30 min.	5 min.	24 hrs.	Very Good	High/Flat	Poor	Good	<92% / <67%	/<92% 1.50 / 1.20 / 1.50
Fluorescent Coatings	Acrylic Modified VT Alkyd	Excellent	Good	Before 2 hrs. or after 72 hrs.	15 min.	72 hrs.	Very good alone: excellent with primer	High	Good	Very Good	<65%	1.75
Hi-Temp Paint	Acrylic, Silicone	Excellent	Excellent	Anytime	30 min.	After firing	Excellent alone	Low	Excellent	Excellent	<88%	1.85
Super Metal Paints	Hydrocarbon <sup>§</sup>	Good	Fair	After 24 hrs.	15 min.	24 hrs.	Good	Metallic	Poor	Poor	<80%	<1.90
Roof Accessory & Trim Paint	Acrylic Lacquer, Silicone	Excellent	Excellent	Anytime	5 min.	24 hrs.	Unknown	Flat	Good	Excellent	<60%	1.20
Asphalt Roof Primer	Petroleum	N/A	Very Good	Anytime	3-4 Hrs.	24 hrs.	N/A	N/A	N/A	N/A	N/A	<1.20
Anodized Metal & Trim Paint	Acrylic	Excellent	Good	Anytime	5 min.	24 hrs.	Very Good	Flat	Good	Excellent	<60%	<1.20
Mine Marking Paint	Alkyd Enamel	Very Good	Good	Not applicable	15 min.	8 hrs.	Not applicable	Flat	Fair	Fair	<66%	1.75
Rebar Green Coating	Epoxy/Acrylic Modified Alkyd	Excellent	Excellent	Before 2 hrs. or after 72 hrs.	15 min.	72 hrs.	Excellent	Medium	Poor	Very Good	<60%	1.40
Camouflage Paint	Styrene/Acrylic Modified Alkyd	Excellent	Excellent	Before 1 hr. or after 72 hrs.	20 min.	72 hrs.	Excellent alone	High/Flat	Excellent	Excellent	60 to 65%	1.20
Tree Marking Paint	Regular (Fluorescent) Medium Alkyd Enamel	Excellent (Good)	Excellent (Fair)	Not applicable (not applicable)	30 min. (30 min.)	24 hrs. (24 hrs.)	Not applicable (Not applicable)	Flat(Flat)	Excellent (Good)	Excellent (Very Good)	<60% (<75%)	1.20 (1.75)
Wet Coat Tree Marking Paint	Acrylic Lacquer	Excellent	Excellent	Anytime	5 min.	5 min.	Not applicable	Flat	Fair	Excellent	<60%	1.20
147 MRO Cold Galvanize	Acrylic	Excellent	Excellent	Before 1 hr. or after 24 hrs.	15 min.	24 hrs.	Excellent alone	Flat Metallic	Poor	Good	<80%	1.90
148 MRO Brite Galvanize	Acrylic	Excellent	Excellent	After 1 hr. or after 24 hrs.	15 min.	24 hrs.	Excellent alone	Metallic	Poor	Very Good	<80%	1.90
143 Chrome Galvanize	Hydrocarbon	Good	Fair	Before 1 hr. or after 24 hrs.	10 min.	24 hrs.	Best over 147/148	Metallic	Poor	Good	<80%	1.90
7007 Cold Galvanize Compound	Acrylic	Excellent	Excellent	Before 1 hr. or after 24 hrs.	15 min.	24 hrs.	Excellent alone	Flat Metallic	Poor	Good	<80%	1.90
7008 Bright Galvanize Coating	Acrylic	Excellent	Excellent	After 24 hrs.	15 min.	24 hrs.	Excellent alone	Metallic	Poor	Good	<80%	1.90
Steel Renew Stainless Steel Coating	Urethane Modified Alkyd	Excellent	Good	Before 2 hrs. or after 120 hrs.	15 min.	7 days	Excellent alone	Metallic	Excellent	Excellent	<80%	1.90

\*A = Flat 1.20; Metallic 1.90; Non-flat 1.40

<sup>§</sup>Hydrocarbon

# MARKING PRODUCTS

Aervoe Industries Incorporated offers the most complete line of inverted marking paints and marking coatings in the world. Choose from the wide range of application-specific aerosol and bulk marking products, including paints, chalk, and specialty marking products such as our patented Fugitive Marker. The higher paint solids level that is an Aervoe standard means a more durable mark, and more linear feet per  $\frac{3}{4}$ " mark with one-coat coverage. All inverted aerosol cans are activated by hand with the patented Spray-Thru Cap, or can be used with cap on or off in Aervoe #244 Spot Marker or #245 Marking Stick applicators.



## APPLICATORS AND MEASURING DEVICES

244 Spot Marker	1 lb.	1 ea.
245 Marking Stick	2 lbs.	1 ea.
286 Measuring Wheel	3 lbs.	1 ea.

## SURVEY MARKING PAINT

Aervoe's Survey Marking Paint is a superior upside-down marking paint that is designed for survey marking. It provides the best quality paint in terms of color visibility and retention, durability, and a lasting mark of up to six months.



CAN SIZE (NET)	WEIGHT	CASE PACK
20-oz. Aerosol (17 oz.)	18 lbs.	12 cans
Gallon Can (Stake Dip)	22 lbs.	2 Gallons

### COLOR SELECTION

#### Regular

201 Red	208 Hi-Vis Yellow
202 Yellow	209 Light Blue
203 Blue	210 Silver
204 Green	212 Purple
205 Orange	281 H.D. Red
206 Black	282 H.D. Yellow
207 White	

#### Fluorescent

220 Fl. Red	227 Fl. Blue
222 Fl. Orange	229 Fl. Pink
224 Fl. Green	230 Fl. Red-Orange
226 Fl. Yellow	288 H.D. Fl. Orange

H.D. = (High Delivery) 30% greater than other colors.

**Note:** Survey Marking Paint contains a non-freezing formula; operational to 14°F (-10°C).



## INVERTED MARKING PAINTS

### SUPREME UTILITY MARKING PAINT

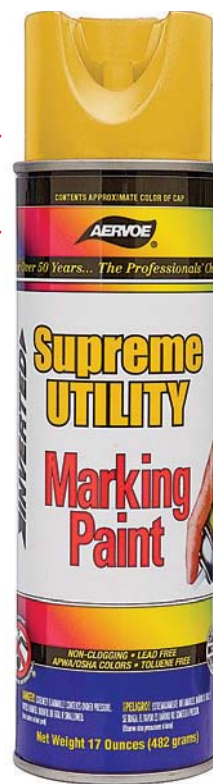
Supreme Utility Marking Paint provides superior quality in terms of initial color brightness, color retention, adhesion, durability, and color consistency. It is uniquely designed for identifying utilities under pavement, gravel, and soil with a formula that has maximum durability, dries within 2–5 minutes, and won't freeze.



CAN SIZE (NET)	WEIGHT	CASE PACK
20-oz. Aerosol (17 oz.)	18 lbs.	12 cans

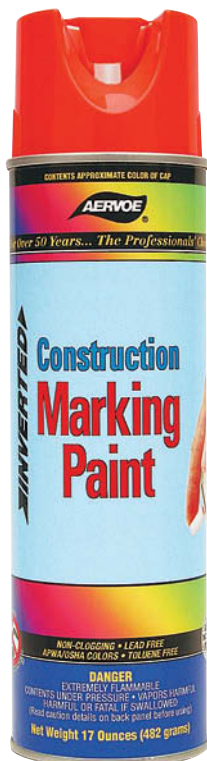
#### COLOR SELECTION

- 295 Utility Yellow
- 296 APWA Yellow



### CONSTRUCTION MARKING PAINT

Aervoe Construction Marking Paint is the flagship of the line, offering a high quality paint that is priced competitively to meet a variety of marking applications while providing good color visibility and durability. Why pay for the added quality of Aervoe Survey Marking Paint if the mark does not need to last as long? Great color durability up to three months.



CAN SIZE (NET)	WEIGHT	CASE PACK
20-oz. Aerosol (17 oz.)	18 lbs.	12 cans

#### COLOR SELECTION

##### Regular

- |            |                   |
|------------|-------------------|
| 251 Black  | 257 Orange        |
| 252 Yellow | 258 Hi-Vis Yellow |
| 254 Blue   | 259 Green         |
| 255 White  | 260 Purple        |
| 256 Red    |                   |

##### Fluorescent

- |                |                    |
|----------------|--------------------|
| 246 Fl. Red    | 250 Fl. Blue       |
| 247 Fl. Orange | 253 Fl. Yellow     |
| 248 Fl. Green  | 283 Fl. Red-Orange |
| 249 Fl. Pink   |                    |



## INVERTED MARKING PAINTS

### ALL PURPOSE MARKING PAINT

This all purpose paint is an economically priced marking paint that is designed to provide a very cost-effective approach to marking and still provide good visibility in the two-month range.



CAN SIZE (NET)	WEIGHT	CASE PACK
20-oz. Aerosol (15 oz.)	16 lbs.	12 cans

#### COLOR SELECTION

Regular	
1380 Black	1384 Green
1381 Red	1385 Orange
1382 Yellow	1387 White
1383 Blue	
Fluorescent	
1390 Fl. Red	1394 Fl. Blue
1391 Fl. Green	1395 Fl. Red-Orange
1392 Fl. Orange	1399 Fl. Pink
1393 Fl. Yellow	



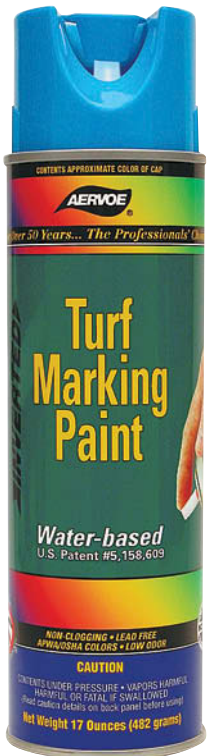
### TURF MARKING PAINT

This patented (#5,128,609), water-based formulation is made specifically for marking on turf surfaces. It will not damage or burn grass roots. Provides a mark that will last up to two months, but can be cut off after the grass has grown out.

### 4750 GREEN-OUT COVER COATING

- Temporary cover up of brown spots on grass
- Lasts 6–8 weeks
- Low cost answer to off-season “green”
- Easy clean up and 5-minute dry time

CAN SIZE (NET)	WEIGHT	CASE PACK
20-oz. Aerosol (18-oz.)	19 lbs.	12 cans
Gallon Bottle	27 lbs.	1 Gallon



## INVERTED SPECIALTY MARKING PAINTS / COATINGS



### MARKING CHALK

AerVOE chalks are a special blend of raw materials that are safe on all surfaces, and are designed specifically for temporary marking. Mark disappears in 10 – 20 days when exposed to water, traffic, and other abrasions. It can also be washed off with a pressure washer if desired. 100% biodegradable.

CAN SIZE (NET)	WEIGHT	CASE PACK
20-oz. Aerosol (15 oz.)	16 lbs.	12 cans

#### COLOR SELECTION

214 Blue	217 Orange
215 White	218 Yellow
216 Red	219 Green

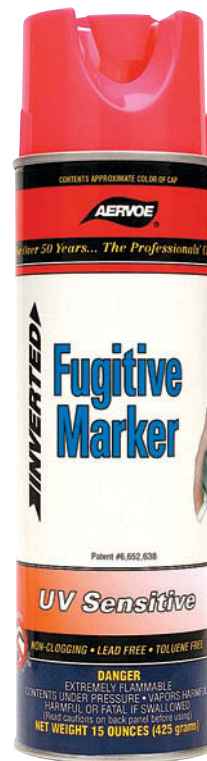
### FUGITIVE MARKER

With another first in the industry, AerVOE brings to market a revolutionary, patented (#6,652,638) coating that is specially formulated to disappear with UV exposure. It is ideal for use in visually sensitive areas with the mark progressively fading from a vivid fluorescent to a clear film in 30 to 35 days.

CAN SIZE (NET)	WEIGHT	CASE PACK
20-oz. Aerosol (15 oz.)	16 lbs.	12 cans

#### COLOR SELECTION

1420 Fl. Red	1426 Fl. Yellow
1422 Fl. Orange	1429 Fl. Pink



### 200 CLEAR COAT

This upside-down clear coating is used to seal and protect construction chalk lines and other temporary marks from wind, moisture, and traffic.

CAN SIZE (NET)	WEIGHT	CASE PACK
20-oz. Aerosol (15 oz.)	16 lbs.	12 cans

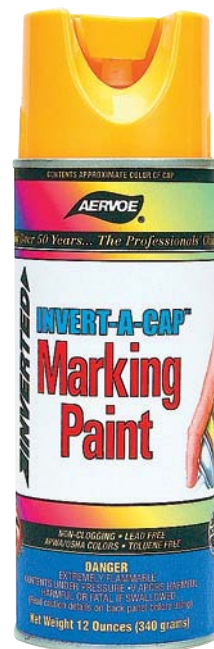
### INVERT-A-CAP®

The ultimate writing tool in inverted marking paint. Use where controlled applications (letters and numbers) are needed, in addition to lines. Best positive delivery cut-off and non-clogging performance with the least possible tip paint build-up.

CAN SIZE (NET)	WEIGHT	CASE PACK
16-oz. Aerosol (12 oz.)	14 lbs.	12 cans

#### COLOR SELECTION

261 Red	270 Fl. Red
262 Yellow	272 Fl. Orange
263 Blue	274 Fl. Green
265 Orange	275 Fl. Red-Orange
267 White	279 Fl. Pink



## APWA/ONE-CALL COLORS



The American Public Works Association (APWA) requires public agencies, utilities, and contractors that excavate underground to use this color standard to identify the location and type of sub-surface utilities. Aervoe Industries was the first marking paint manufacturer to provide the uniform standard for these colors, and our products still proudly carry the original One-Call Systems International trademark.

APPLICATION	AERVOE PRODUCT	CONSTRUCTION	ALL PURPOSE	SURVEY	SUPREME
Electric	Red	256	1381	201, 281	—
Gas-Oil	Yellow	252	1382	202, 282	295, 296
Water	Blue	254	1383	203	—
Sewer	Green	259	1384	204	—
Communication/ CATV	Orange	257	1385	205	—
Proposed Excavation	White	255	1387	207	—
Reclaimed Water	Purple	260	—	212	—
Temporary Survey Marking	Pink	249	1399	229	—

Fluorescent colors may be utilized in place of organic colors if acceptable by local standard.

## MARKING ENAMELS AND INKS

### MARKING INKS

A permanent marking ink specifically formulated for metalworking and color coding.

- Excellent for marking hot metal up to 500°F
- Waterproof, very good weather resistance
- Quick drying; no smears or smudging
- Outstanding adhesion and UV resistance

**Uses:** For use on most metals and non-porous surfaces including sheet and cold rolled steel, iron pipe and girders, and metal coils, tube stock, and drums.

**CAN SIZE (NET)**  
16-ounce Aerosol (12 oz.)

**WEIGHT**  
13 lbs.

**CASE PACK**  
12 Cans

**COLOR SELECTION**  
7080 Black    7083 White





## PAINT PENS / TAPES / FLAGGING

### INDUSTRIAL PAINT PENS

Medium point, felt tip, valve action pens. Mark virtually any surface.

- Xylene-free
- Industrial strength, oil-based paint
- Heavy duty valve action tip
- Aluminum barrel
- Fast drying, permanent
- Airtight cap increases pen life
- Mark a variety of surfaces, including wood, glass, metal, or plastic



CAN SIZE (NET)	WEIGHT	CASE PACK
Fiber Tip Pen	5 lbs.	48 Pens

---

COLOR SELECTION			
1221 Red	1222 Yellow	1226 Black	1227 White

### FLAGGING TAPE

- Easy-to-handle PVC material
- Standard colors 2 mil thick, fluorescents 4 mil thick



PKG. SIZE	WEIGHT	CASE PACK
Regular 1 <sup>3</sup> / <sub>16</sub> " x 300' Roll	31 lbs.	72 Rolls
Fluorescent 1 <sup>3</sup> / <sub>16</sub> " x 150' Roll	29 lbs.	72 Rolls

---

COLOR SELECTION			
Regular		Fluorescent	
1115 Red	1135 Yellow	1101 Orange	1110 Red
1120 Blue	1140 Green	1105 Pink	1130 Lime
1125 White			

### MARKING FLAGS

- 16-gauge wire stake
- PVC flag that is economical and made to last



PKG. SIZE	WEIGHT	CASE PACK
4" x 5" x 21"	27 lbs.	1000 Flags

---

COLOR SELECTION			
Regular		Fluorescent	
1178 White	1180 Red	1175 Orange	1177 Green
1179 Blue	1181 Yellow	1176 Pink	

Custom imprint available

# STRIPING PAINT AND APPLICATORS



## ATHLETIC STRIPING PAINT (Water-Based)

A highly pigmented formulation that will not cause leaf yellowing or root damage, or burn grass on athletic surfaces.

- Fast drying; 15 minutes to touch, 30 minutes to handle
- Non-clogging spray tip
- Will not crack tennis court sealant
- VOC compliant and lead-free
- Classified under NFPA 30B, Level I for warehouse storage
- One case of aerosols will yield a 4-inch stripe approximately 800 linear feet
- Apply aerosol with #745 Striping Stick or #801 Vers-A-Striper

**Uses:** Grass or dirt for line striping playgrounds, football, baseball, soccer, and track fields. Can also be applied on concrete, cement, and other similar surfaces.

## STRIPING PAINT (Solvent-Based)

Aervoe Striping Paint is designed to adhere to a variety of surfaces, especially asphalt and concrete. Asphalt black is available to correct mistakes, or cover existing lines.

- Fast drying; 5 minutes to touch, 30 minutes to handle
- Durable, long-lasting, high-visibility colors
- VOC compliant and lead-free
- Non-clogging spray tip
- Excellent resistance to traffic, oil, and gasoline
- One case of aerosols will yield a 4-inch stripe approximately 700 linear feet
- Apply aerosol with #745 Striping Stick, #798 Econo Striper, #800 or #801 Vers-A-Striper

**Uses:** Parking lots, warehouse aisles, school yards, apartment complexes, road surfaces, tennis courts, fairgrounds, and factory safety aisles.

CAN SIZE (NET)	WEIGHT	CASE PACK
20-oz. Aerosol (18 oz.)	19 lbs.	12 cans
Gallon Can	24 lbs.	2 Gallons

### COLOR SELECTION

710 Traffic White	750 Traffic Blue
720 Traffic Yellow	760 Traffic Green
730 Traffic Red	770 Asphalt Black
740 Traffic Orange	

All Aervoe aerosol striping paints use a new tip design to produce the sharpest edges available.



## SUPREME STRIPING PAINT (High Solids, Solvent-Based)

Our top-of-the-line solvent-based striping paint with the highest pigment, solids-to-weight ratio attainable with today's packaging technology.

- Fast drying; 15 minutes to touch
- VOC compliant and lead-free
- One case of aerosols will yield a 4-inch stripe approximately 800 linear feet
- Durable, long-lasting colors
- Non-clogging tip
- Apply with #745 Striping Stick, #798 Econo Striper, #800 or #801 Vers-A-Striper
- Provides an opaque line that remains durable against ground traffic scuffing

**Uses:** Parking lots, warehouse aisles, school yards, apartment complexes, road surfaces, tennis courts, fairgrounds, factory safety aisles, and baseball and track fields.

CAN SIZE (NET)	WEIGHT	CASE PACK
20-oz. Aerosol (18 oz.)	19 lbs.	12 cans

### COLOR SELECTION

701 Traffic White Supreme	702 Traffic Yellow Supreme
---------------------------	----------------------------

## AERVOE STRIPING APPLICATORS

### 745 STRIPING STICK

For stenciling and touch-up. Approximately 36" long. Use with Aervoe Striping Paint only.

### 797 STENCIL KIT

Seventeen 22-inch by 36-inch composition boards with full alphabet and numbers, plus 13 setups - such as handicap, exit, no parking, etc.

### 800 VERS-A-STRIPER® - Pavement

A lightweight, heavy-duty applicator for Aervoe aerosol Striping Paint. Stripe widths up to 4-inches. For use on hard surfaces such as asphalt and concrete. Includes a striping alignment guide and radius wheel for making smooth arcs.

### 801 VERS-A-STRIPER® - Turf and Dirt

Specially designed for striping athletic fields and other turf and dirt surfaces. For use with Aervoe aerosol Striping Paint. Same model as #800, with 8-inch diameter wheels. Includes a striping alignment guide and radius wheel for making smooth arcs.



# M.R.O. PRODUCTS

Professionals turn to Aervoe for the hallmark of specialty cleaners, lubricants, and protective coatings for manufacturing, industrial, and commercial use. Formulated with high solids, Aervoe ToolMates® MRO products hold up to ensure continued performance, help prevent downtime, and increase operating efficiencies. Choose from a wide variety of lubricants, penetrants, and specialty formulations to provide a specific solution to your problem. Aervoe is your one source shop for all the basics in MRO products. Select products are available in our newest bulk package dispenser, the Giant Pressurized Tank, as noted on page 54. Most products available in gallons may also be obtained in 5 and 55-gallon containers.

## MULTIPURPOSE WET LUBRICANTS

### 7340 ALL-4®

Clean, penetrate, lubricate, protect - does All-4

- Silicone free
- Displace moisture
- Cleans away dirt and grease
- No gummy residue
- Fills microscopic irregularities on surfaces
- Meets Military Spec. #MIL-C-16173D, Group III
- Spray-Any-Way valve allows product to be applied in either an upright or upside down position

**Uses:** For use on machinery, spare parts, nuts, bolts, lawn mowers, guns, wheels, aircraft parts, taps and dies, marine and mining equipment, office machines, sliding doors, and hinges.

CAN SIZE (NET)	WEIGHT	CASE PACK
16-ounce Aerosol (10 oz.)	12 lbs.	12 Cans
Gallon Can	8 lbs.	1 Gallon
5-Gallon Pail	40 lbs.	1 Pail
55-Gallon Drum	400 lbs.	1 Drum

### TEF-LUBE™

Tef-Lube™ is a superior lubricant that combines the advantages of high-grade petroleum oils and solvents with micron-sized PTFE to provide the finest multi-component penetrating lubricant system available.

- Protects against corrosion; displaces moisture
- Keeps equipment running longer
- Reduces friction and increases part life
- Reduces costly breakdowns caused by worn and dirty parts
- Penetrate inaccessible areas with extension tube
- Spray-Any-Way valve allows aerosol to be applied in either an upright or upside down position
- Performs at temperatures from -60°F to 475°F (-51°C to 246°C)
- Meets MIL-C-372B (Small arms bore cleaner), MIL-C-23411/A (Corrosion preventive compound), VV-P-216B (Penetrating oil), VV-L-820C (General purpose lubricating oil), and VV-L-751C (Chain, wire rope lubricating oil)

**Uses:** Chains, bearings, gears, sprockets, conveyors, electric motors and switches, locks, air tools, firearms, fishing reels, sporting equipment, office machines, home appliances, and in aircraft maintenance and automotive assemblies.

CAN SIZE (NET)	WEIGHT	CASE PACK
937 - 16-ounce Aerosol (11 oz.)	13 lbs.	12 Cans
938 - 8-ounce Aerosol (7 oz.)	9lbs.	12 Cans



## APC-961 GREASE-FREE LUBE/FILM

This light lubricant penetrates into tight crevices, provides a dry film, and *resists oil, dust, and dirt buildup.*

- Provides short term corrosion protection
- Displaces moisture
- Cleans and lubricates delicate mechanisms
- Does not contain chlorinated solvents or ozone depleting substances
- Will not harm plastics or rubber
- Conforms to MIL-C-23411A and O-W-001284
- Spray-Any-Way valve allows product to be applied in either an upright or upside down position

**Uses:** Electric motors, ignition systems, cables, nuts and bolts, locks and hinges, O-rings, weight training equipment, and general office equipment.

CAN SIZE (NET)	WEIGHT	CASE PACK
16-ounce Aerosol (11 oz.)	13 lbs.	12 Cans
Gallon Can	17 lbs.	2 Gallons
5-Gallon Pail	39 lbs.	1 Pail
55-Gallon Drum	392 lbs.	1 Drum



## APC-962 H.D. MULTIPURPOSE LUBE

A strong, multipurpose lubricant that doesn't contain harmful solvents or silicones.

- Displaces moisture and unlocks rusted parts
- Reduces wear brought on by corrosion or friction
- Spray-Any-Way valve provides for application in either upright or upside-down position
- Non-drying oil that provides extra protection against corrosion

**Uses:** For use on engines and electric motors, cables and linkages, stored parts, hand tools, pulleys, production equipment, tracks, fasteners, bits, and dies.

CAN SIZE (NET)	WEIGHT	CASE PACK
16-ounce Aerosol (11 oz.)	13 lbs.	12 Cans
Gallon Can	18 lbs.	2 Gallons
5-Gallon Pail	40 lbs.	1 Pail
55-Gallon Drum	397 lbs.	1 Drum



## APC-963 H.D. CORROSION INHIBITOR

Stops rust and corrosion in its tracks.

- Penetrates and removes moisture
- Provides sacrificial wax-like film that deters corrosion on surfaces that have become exposed due to abrasion
- Spray-Any-Way valve

**Uses:** Great on bare metal, battery terminals, cables and chains, elevators, cranes, fork lifts, pumps, outdoor tools and equipment, airbrake release springs, aircraft fuselages, and offshore drilling equipment.

CAN SIZE (NET)	WEIGHT	CASE PACK
16-ounce Aerosol (11 oz.)	12 lbs.	12 Cans
Gallon Can	16 lbs.	2 Gallons
5-Gallon Pail	40 lbs.	1 Pail
55-Gallon Drum	377 lbs.	1 Drum



## FOOD GRADE LUBRICANTS

### 932 FOOD GRADE LUBE OIL

Aerove's Food Grade Lube Oil is an economical, non-silicone lubricating oil.

- NSF H-1 - clear mineral oil
- Penetrates the surface to loosen rust, corrosion, scale, and dirt
- Leaves a clear, stainless film that prevents machinery parts from sticking
- Resists moisture and does not leave a residue
- Excellent in areas where silicone over spray might interfere with carton sealing or capping operations
- Separates from water even under acid/alkali conditions
- Dielectric strength of 30kV/mm

**Uses:** Equipment in food processing plants, dairies, bakeries, soft drink plants, supermarkets, breweries, and grain elevators. Apply to chains, chain drive belts, bearings, belts, machinery valves, pistons, rollers, stainless steel pumps, bottle filling machinery, and slicing machines.

CAN SIZE (NET)	WEIGHT	CASE PACK
16-ounce Aerosol (11 oz.)	13 lbs.	12 Cans
Gallon Can	18 lbs.	2 Gallons
5-Gallon Pail	42 lbs.	1 Pail
55-Gallon Drum	410 lbs.	1 Drum

### 933 FOOD GRADE LUBE GREASE

Multi-service, non-melting, fortified waterproof grease forms a durable film that withstands daily equipment washdowns.

- NSF H-1
- PTFE fortified
- N.L.G.I. Grade 2
- Grease forms a tough, durable film that prevents metal-to-metal contact
- Lubricates, seals out water and resists chemical attack
- Performs at temperatures up to 475° F
- Compatible with most plastics
- 35 lbs. load-carrying capacity based on Timken OK load tests
- Dielectric strength of 30kV/mm

**Uses:** Use as a general purpose lubricant on slides, guides, chains, conveyors, and other transfer equipment found in food, beverage, meat, dairy, and marine processing plants. Best when used on unpainted surfaces.

CAN SIZE (NET)	WEIGHT	CASE PACK
16-ounce Aerosol (11 oz.)	13 lbs.	12 Cans
Gallon Can	9 lbs.	1 Gallons
5-Gallon Pail	42 lbs.	1 Pail
55-Gallon Drum	415 lbs.	1 Drum

### 8036 FOOD GRADE SILICONE LUBE

A low viscosity silicone lubricant that eliminates squeaks, insulates and waterproofs electrical parts.

- NSF H-1
- 4% silicone formula
- Odorless, colorless, non-staining, dry residual film
- Prevents sticking and won't transfer to end parts
- Will not interfere with carton sealing, bottle capping, or other food preparation applications
- Will not harm paint, metal, wood surfaces, and most plastics
- Reduces noise and wear where friction may occur
- Separates from water even under acid/alkali conditions
- Waterproofs ignition systems
- Dielectric strength of 35kV/mm

**Uses:** Metal hinges, plastic rollers, guide rails, slides, or anything that sticks. Can also be used on air tables and on food preparation equipment such as dough mixers, guards, food racks, knives, saws, and slicing machines.

CAN SIZE (NET)	WEIGHT	CASE PACK
16-ounce Aerosol (10.5 oz.)	12 lbs.	12 Cans
Gallon Can	15 lbs.	2 Gallons

### 9152 ANTI-SEIZE FOOD GRADE

Designed to lubricate and protect most metals from corrosion and seizure. See page 39 for other anti-seize products.

- Will not harden, separate, or evaporate
- Protects parts under extreme heat, cold, pressure, steam, and salt water exposure
- Protects against corrosion, seizing, rust, galling, galvanic pitting, and carbon fusing
- Contains a premium white paste containing zinc oxide
- Cannot be burned off, and will not melt or run after application
- Provides excellent lubricity and better make-up and breakout torque.
- Durable, long-lasting film
- Does not contain clay or soap-based thickeners
- Eliminates parts wear and breakage
- Meetl MIL-A-907E
- Brush top bottle has an angled applicaton brush so the entire contents can be removed
- Color - off white
- Boiling point: 61°F to 500°F
- Flash point: 375°F
- Specific gravity - 1.11
- Operational temperature range -40°F to 1000°F

**Uses:** Food processing equipment, threaded fittings, metal fittings, packing sleeves, valves, pumps, bushings, compressors, and castings.

FOOD GRADE - White (zinc oxide)		
9152	8-ounce B/T Bottle	8 lbs. 12 Bottles

## MOLYBDENUM DISULFIDE-BASED LUBRICANTS

### 7041 MOLY GREASE

This high-grade molybdenum disulfide lubricant waterproofs and rustproofs while under heavy stress and vibration.

- Prevents seizing and galling
- Stays in place under extreme pressure loads; will not leak out
- Performs at temperatures up to 450°F (232°C)

**Uses:** Electric motor bearings, open or exposed gears, fan bearings, pump bearings, conveyor bearings, power take-off, wire rope, fifth wheels on tractor trucks, machine tools, metal forming presses, threads, sprockets, hoists, and anywhere heat is generated from metal-to-metal contact. Ideal for forklift maintenance of cables and chains as well as flexible couplings.

<b>CAN SIZE (NET)</b>	<b>WEIGHT</b>	<b>CASE PACK</b>
16-ounce Aerosol (11 oz.)	13 lbs.	12 Cans



### 6080 DRY MOLY LUBRICANT

This quick drying lubricant leaves a thin film that provides extreme pressure lubrication.

- Provides lubrication at temperatures between -100°F to 700°F (-73° to 371°C)
- Withstands pressures up to 100,000 psi
- Quick drying
- Ideal for assembly and break-in lubrication
- Resists corrosion
- Bonds to metal surfaces without attracting dirt or dust
- Prevents sliding or threaded parts from seizing
- Does not contain oil or dilutants

**Uses:** Automotive and industrial gaskets, grinding belts, threaded connections, metal belts, rubber components, sliding surfaces and gears, shafts, hinges, cams, bearings, chain drives and pulleys, chutes and bins, vending machines, and conveyor belts where heat is present. Works well in assembly and break-in of motors, machinery, pumps, compressors, and valves.

<b>CAN SIZE (NET)</b>	<b>WEIGHT</b>	<b>CASE PACK</b>
16-ounce Aerosol (11.6 oz.)	13 lbs.	12 Cans

### 7043 WIRE ROPE, CHAIN, & CABLE LUBE

A high grade lubricating oil that is fortified with molybdenum disulfide to penetrate inaccessible areas and provide superior lubrication where temperature and stress will break down ordinary lubricants.

- Excellent water displacing characteristics provide corrosion protection
- Provides excellent metal penetration
- Travels deep into wire ropes and exposed gearboxes, and along cabling
- Dark gray color allows easy visibility of application
- Will not wash away or rub off
- Reduces wear and increases chain life
- Performs at temperatures between -20°F and 300°F (-29°C and 149°C)
- FALEX E.P. Test Fallen Load to 4,500 lbs.

**Uses:** Chain drives and pins, open gearing, sprockets, wire ropes, bushings, rollers, clippers, cables, hoists, gearboxes, chain saws, conveyors, motorcycle and bicycle chains, and other metal surfaces.

<b>CAN SIZE (NET)</b>	<b>WEIGHT</b>	<b>CASE PACK</b>
16-ounce Aerosol (12.7 oz.)	14 lbs.	12 Cans

## SPECIALTY LUBRICANTS / PENETRANTS

### 950 PERFORMANCE BLEND RUST-SOLV™

Quickly loosens rust while penetrating grease and dirt. This product is not a lubricant, but a deep penetrant made especially for freeing seized and/or frozen parts and assemblies.

- High speed, high flash, non-acid penetrating fluid
- High-solvency value makes it an ideal degreaser
- Safe to use in non-heat, electrical exposure
- Works on all forms of oxides, including copper, iron, lead, and zinc
- Dielectric strength 25kV/mm
- Will not harm painted surfaces

**Uses:** Loosens corroded or frozen nuts, pipes, locks, pumps, hinges, valves, screws, springs, pulleys, mufflers, lugs, stud bolts, brake linkage, heat risers, and battery cable terminals.

**CAN SIZE (NET)**  
16-ounce Aerosol (12 oz.)

**WEIGHT**  
14 lbs.

**CASE PACK**  
12 Cans

### 6030 PENETRATING OIL

Loosens rust and corrosion formed by alkali, fruit acids, water, and electrolysis.

- Formulated with low surface tension for fast penetrating action
- Makes disassembly of parts possible with savings in time and material; attacks rust and corrosion
- Displaces moisture; free frozen parts
- Bulk flash point >160°F (71°C); dielectric strength 35kV/mm

**Uses:** Metals, alloys, rubber, and most painted surfaces. Release rusted and corroded nuts, pipes, pumps, hinges, valves, screws, pulleys, shafting, mufflers, stud bolts, heat risers, battery cables, roller conveyors, and wheel lug nut release.

**CAN SIZE (NET)**  
16-ounce Aerosol (11 oz.)

**WEIGHT**  
13 lbs.

**CASE PACK**  
12 Cans

### 6075 DRY FILM LUBRICANT

An industrial strength dry PTFE lubricant that is ideal whenever silicone products are not acceptable, and higher temperatures or pressure performance is required.

- Durable up to 500°F (260°C) for extended periods
- Won't interfere with post-finishing operations
- Reduces clean-up labor time
- Safe for rubber, wood, and metals
- Unique, dry lubricating qualities; will not collect dust

**Uses:** Recommended for use in any situation where reduced friction and drag is desired on plastic, glass, rubber, metal, or wood. Ideal in textiles industry, on instruments, tools, drawers, windows, conveyor belts, cord, wire, and machine parts.

**CAN SIZE (NET)**  
16-ounce Aerosol (11 oz.)

**WEIGHT**  
13 lbs.

**CASE PACK**  
12 Cans

### 6078 T.F.E. LUBRICANT

Made with PTFE and acrylic resin, this heavy-duty lubricant provides the ultimate in protection.

- Resists moisture
- Non-staining
- Resin-bonded (2% acrylic)

**Uses:** Use on conveyor belts, machine tools, dies, and locking mechanisms, cement molds, etc.

**CAN SIZE (NET)**  
16-ounce Aerosol (11 oz.)

**WEIGHT**  
13 lbs.

**CASE PACK**  
12 Cans

### 7037 LITHIUM GREASE

This all weather grease and lubricant is recommended for general metal-to-metal applications. It is compatible with plastics and rubber. Heavy conical spray doesn't drip or run on vertical surfaces.

- Resists corrosion and oxidation on unpainted metal surfaces
- Provides all-weather lubrication for moving parts
- Effective from -70°F to 360°F (-57°C to 182°C)
- Reduces friction and eliminates squeaks and squeals
- Excellent compatibility with exotic metals, plastics, and rubber
- Case includes 12 alternate tips with extension tubes for precision application in hard to reach areas

**Uses:** Chains, gears, drives, hinges, intricate metal catches, fine gear cases, bolts, and other vertical or overhead surfaces. Can also be used on knockout pins on mold equipment.

**CAN SIZE (NET)**  
16-ounce Aerosol (11 oz.)

**WEIGHT**  
13 lbs.

**CASE PACK**  
12 Cans



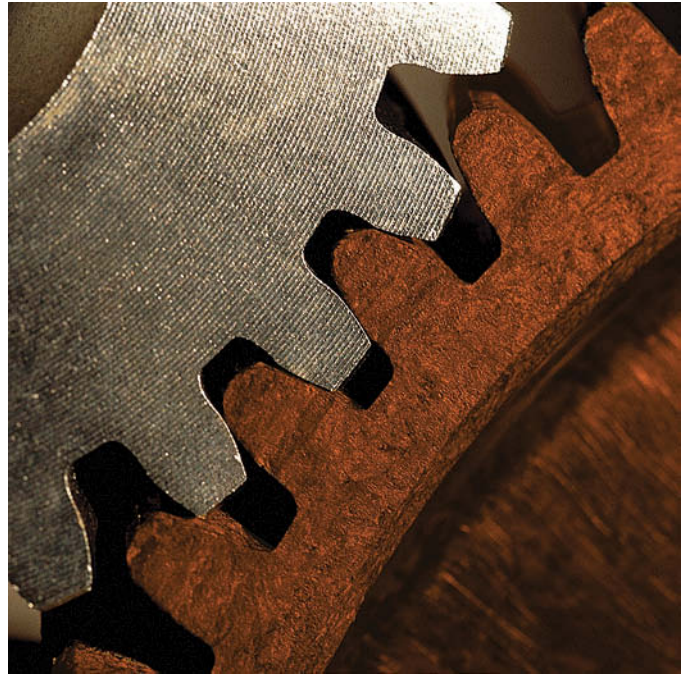


## 7045 HEAVY DUTY OPEN GEAR & WIRE ROPE LUBE

This high-grade asphaltic grease won't become brittle, is not affected by weather, and has outstanding adhesion properties.

- Minimizes internal friction
- Displaces water to provide excellent rust and corrosion protection
- Prevents metal bearing surfaces from becoming crazed and brittle
- Withstands extreme pressures with maximum adhesion
- Withstands wash downs; migrates on metal surfaces to the core of wire rope and spring windings
- Performs at temperatures between 0°F and 250°F (-18°C and 121°C)

**Uses:** Wire rope, exposed gears, winches, roller chains, elevator cables, conveyor rolls, fifth wheels on tractor trucks, draglines, construction machinery, and anywhere else that lubrication and superior mastic properties are desired.



### CAN SIZE (NET)

16-ounce Aerosol (12 oz.)

### WEIGHT

14 lbs.

### CASE PACK

12 Cans

## 8034 GENERAL PURPOSE SILICONE LUBE

This multi-purpose lubricant leaves a clear residual dry film that helps prevent sticking without transferring to the surface. Slower dry allows full penetration into rubber surfaces.

- 5% silicone formula
- Insulates, stops squeaks and sticking, prevents freezing
- Brings life back to old rubber and weather-stripping keeping it soft and flexible
- Will not harm most plastics
- Repels water; waterproofs ignition systems

**Uses:** Metal hinges, plastic rollers, rubber mountings, O-rings, electrical insulation, slides, guides, conveyors, dough mixers, saws, grinders, doors, locks, trunk lids, and any sliding surface.

### CAN SIZE (NET)

16-ounce Aerosol (10.5 oz.)  
Gallon Can  
5-Gallon Pail  
55-Gallon Drum

### WEIGHT

12 lbs.  
18 lbs.  
34 lbs.  
340 lbs.

### CASE PACK

12 Cans  
2 Gallons  
1 Pail  
1 Drum

## 8078 DRY GRAPHITE LUBRICANT

Specifically designed for engine or mechanical parts prior to their assembly. Made of natural colloidal graphite and is an ideal lubricant when petroleum products must be avoided.

- Provides lubrication at temperatures of -100° to 1000°F (-73° to 538°C)
- Excellent choice for extreme temperature lubrication
- Dry, oil-free coating that won't attract dirt or dust
- Does not contain oil or moisture-based dilutants
- Stops squeaks and sticking on contact with excellent conductivity
- Uniform coat bond prevents scoring and seizing
- Unique protective film gives "new finish" appearance

**Uses:** Ideal on automotive and industrial gaskets, conveyors, bearings, sliding windows and doors, locks, springs, chains, sprockets, plating non-conductors, mating surfaces on machines, and pre-assembly lubrication of moving parts.

### CAN SIZE (NET)

16-ounce Aerosol (12 oz.)

### WEIGHT

13 lbs.

### CASE PACK

12 Cans

## METALWORKING COMPOUNDS AND FLUIDS

### 887 ANTI-SPATTER

This vegetable based formulation provides a protective film coating to aid in removal of weld spatter, and keeps welding tips and nozzles clean.

- Light yellow, tacky film visually confirms coverage
- Prevents spatter from adhering to surrounding metal surfaces
- Eliminates grinding and chiseling
- Quick and easy clean up
- Does not contain silicones

**Uses:** Welding and torch cutting devices, including MIG and TIG nozzles and tips, weldments, electrode holders, fixtures, resistant welding tips, and in all types of maintenance/production welding applications.

CAN SIZE (NET)	WEIGHT	CASE PACK
16-ounce Aerosol (12 oz.)	14 lbs.	12 Cans

### 890 CUTTING OIL

This non-flammable, thinnable water-based cutting oil improves metal cutting operations and increases efficiencies in machining operations.

- Reinforced with high-viscosity oils and sulfur-free, extreme pressure additives
- Prolongs tool life, reduces tool sharpening and down time
- Lubricates and cools at the cutting point

**Uses:** Sawing, tapping, grinding, machining, threading, and drilling. Recommended for use on all metals including stainless steel and soft metals such as aluminum, brass, and copper. Use on turret lathes, gear cutters, broaches, and automatic screw machines.

CAN SIZE (NET)	WEIGHT	CASE PACK
16-ounce Aerosol (13 oz.)	14 lbs.	12 Cans
Gallon Can	19 lbs.	2 Gallons
5-Gallon Pail	46 lbs.	1 Pail
55-Gallon Drum	459 lbs.	1 Drum

### BUTTERCUT CUTTING/TAPPING COMPOUND

This high temperature, high pressure film provides dependable tool point lubrication.

- All natural ingredients
- Flash point of 550°F (288°C)
- No etch or staining

**Uses:** For boring, drilling, planing, milling, sawing, tapping, and many other close-tolerance operations. On stainless steel, nickel and copper alloys, die and tool steels, and other metals and alloys that are difficult to cut or tap.

CAN SIZE (NET)	WEIGHT	CASE PACK
5040 Pint Can	17 lbs.	12 Pints
5041 Gallon Can	18 lbs.	2 Gallons



### 6001 TOOLMAKER'S INK BLUE

This specially formulated blue layout fluid is for use in tool and die making, pattern-making, machining and other related applications.

- Dries instantly; will not peel, flake or rub off
- Ultimate coverage for accurate scribing without glare
- Excellent adhesion to all metals, aluminum and glass
- Easily removed with Crown #6095 Toolmaker's Ink Remover
- Heat resistant, non-corrosive formula

**Uses:** Tool and die making, pattern making, machining, templates, machined parts and maintenance mechanicals.

CAN SIZE (NET)	WEIGHT	CASE PACK
16-ounce Aerosol (12 oz.)	13 lbs.	12 Cans
Gallon Can	17 lbs.	2 Gallons
5-Gallon Pail	40 lbs.	1 Pail
55-Gallon Drum	403 lbs.	1 Drum

### 6090 PRUSSIAN BLUE HIGH SPOT INDICATOR

Prussian Blue High Spot Indicator is for determining high spots on surfaces and for mating components in assembly operations.

- Quick identification of high spots
- Significantly reduces timely level checks
- Identify points of interference that cause heat and wear
- Easily removed with #6095 Toolmaker's Ink Remover

**Uses:** For locating high spots when scraping bearing surfaces, etc.

CAN SIZE (NET)	WEIGHT	CASE PACK
6-ounce Aerosol (5 oz.)	7 lbs.	12 Cans



### 6095 TOOLMAKER'S INK REMOVER

Use to remove #6001 Toolmaker's Ink Blue and #6090 Prussian Blue High Spot Indicator.

CAN SIZE (NET)	WEIGHT	CASE PACK
16-ounce Aerosol (10.5 oz.)	12 lbs.	12 Cans
Gallon Can	17 lbs.	2 Gallons
5-Gallon Pail	39 lbs.	1 Pail
55-Gallon Drum	392 lbs.	1 Drum

### 7020 CUTTING OIL

An all-purpose, solvent-based lubricant and coolant for industrial cutting operations.

- Reduces wear
- Great for soft or hard metals
- Make clean cuts

**Uses:** Turret lathes, gear cutters, grinders, automatic screw machines, and pipe threaders.

CAN SIZE (NET)	WEIGHT	CASE PACK
16-ounce Aerosol (10.5 oz.)	12 lbs.	12 Cans
Gallon Can	18 lbs.	2 Gallons
5-Gallon Pail	42 lbs.	1 Pail
55-Gallon Drum	417 lbs.	1 Drum

### 9106 TAP TOOL

A synthetic lubricant that increases tool life by as much as 200%.

- Carries heat away from cutting edge and tool
- Reduces breakage and friction

**Uses:** For drilling, tapping, milling, threading, boring, broaching, reaming, turning, and engraving.

CAN SIZE (NET)	WEIGHT	CASE PACK
16-ounce Aerosol (14 oz.)	15 lbs.	12 Cans

## LUBRICANTS AND PENETRANTS USER GUIDE

AERVOE PRODUCT	BASE MATERIALS ACTIVE INGREDIENTS	TEMP RANGE	NSF CATEGORY	LUBRICITY FALEX FLC TEST	AEROSOL FLASH POINT	DIELECTRIC STRENGTH	PENETRATING ABILITY	CORROSION PROTECTION
<b>Multi-Purpose Wet Lubricants</b>								
937 Tef-Lube™	Petroleum Oil, PTFE	-60°F to 475°F	—	>100 ft. lbs.	>160°F	19kV/mm	Excellent	Excellent
APC-961 Grease-Free Lube/Film	Petroleum Base Oils	-20°F to 450°F	—	30 ft. lbs.	N/A	30kV/mm	Excellent	Good
APC-962 H.D. Multipurpose Lube	Petroleum Hydrocarbon, Calcium Sulfonate	-20°F to 450°F	—	50 ft. lbs.	N/A	>20kV/mm	Excellent	Excellent
APC-963 Corrosion Inhibitor	Petroleum Hydrocarbon, Petroleum	-50°F TO 200°F	—	N/A	N/A	>20kV/mm	Good	Excellent
<b>Food Grade Lubricants</b>								
932 Food Grade Lube Oil	Mineral Oil	Up to 475°F	H-1	35 ft. lbs.	<0°F	30kV/mm	Excellent	Good
933 Food Grade Lube Grease	Synthetic Oil, PTFE	Up to 500°F	H-1	>150 ft. lbs.	<0°F	30kV/mm	Good	Excellent
8036 Food Grade Silicone Lube	Silicone Fluid, Hexane	-50°F to 500°F	H-1	30 ft. lbs.	<0°F	35kV/mm	Excellent	Good
<b>Molybdenum Disulfide-Based Lubricants</b>								
6080 Dry Moly Lubricant	Molybdenum Disulfide, Liquid Thermostat Resin	Up to 750°F	—	>100 ft. lbs.	<0°F	N/A	Excellent	Good
7041 Moly Grease	Molybdenum Disulfide, Naphthionic & Paraffinic Oils	Up to 500°F	—	>100 ft. lbs.	<0°F	N/A	Good	Excellent
7043 Wire Rope, Chain & Cable Lube	Petroleum Base Oils, Molybdenum Disulfide	-20°F to 300°F	—	>100 ft. lbs.	0°F	N/A	Excellent	Good
<b>Specialty Lubricants/Penetrants</b>								
950 Performance Blend Rust-Solv™	Petroleum Distillate/Aliphatic Solvents	-50°F to 350°F	—	50 ft. lbs.	150°F	>20kV/mm	Excellent	Excellent
6007 Rust Inhibitor	Lanolin, Heptane	-50°F to 350°F	—	N/A	<0°F	N/A	Good	Excellent
6030 Penetrating Oil	Petroleum Distillate/Aliphatic Solvents	-50°F to 350°F	—	30 ft. lbs.	>160°F	35kV/mm	Excellent	Good
6075 Dry Film Lubricant	PTFE, Hexane, Acetone	Up to 500°F	—	60 ft. lbs.	<0°F	600V/mm	Good	Good
6078 T.F.E.® Lubricant	Acetone, Cyclohexane T.F.E.	Up to 500°F	—	60 ft. lbs.	<0°F	N/A	Excellent	Excellent
7037 Lithium Grease	Neutral Lithium Grease, Aliphatic Solvents	-70°F to 350°F	—	>60 ft. lbs.	<0°F	>20kV/mm	Good	Good
7045 H.D. Open Gear & Wire Rope Lube	Molybdenum Disulfide, Poly Butane	0°F to 250°F	—	>150 ft. lbs.	<0°F	>20kV/mm	Good	Excellent
7340 All-4	White Oil, Mineral Spirits	-50°F to 350°F	—	40 ft. lbs.	155°F	33kV/mm	Excellent	Excellent
8034 General Purpose Silicone Lube	Silicone Fluid, Petroleum Naphtha	-50°F to 500°F	—	>30 ft. lbs.	<0°F	35kV/mm	Excellent	Good
8078 Dry Graphite Lubricant	Carbon Graphite, Gum Resin	Up to 850°F	—	75 ft. lbs.	<0°F	N/A	Excellent	Excellent
<b>Metalworking Compounds and Fluids</b>								
887 Anti-Spatter	Lecithin, Water	0° to 312°F	—	N/A	>100°F	N/A	N/A	Good
890 Cutting Oil	Emulsified Oil, Water	0° to 312°F	—	>100 ft. lbs.	N/A	N/A	Good	Good
5040/5041 Buttercutt Cutting/Tapping Comp.	Animal Fat	Up to 650°F	—	N/A	>650°F	N/A	Poor	Good
6001 Toolmaker's Ink Blue	Methyl Ethyl Ketone, Toluene	0°F to 350°F	—	N/A	<0°F	N/A	N/A	N/A
6090 Prussian Blue High Spot Indicator	Lanolin, Trichloroethylene	0°F to 350°F	—	N/A	<0°F	N/A	Poor	Good
6095 Toolmaker's Ink Remover	Heptane, Methyl Ethyl Ketone	0°F to 200°F	—	N/A	0°F	N/A	Excellent	Poor
7020 Cutting Oil Light Oil, Solvent-based	Petroleum Lubricating Oil	0°F to 390°F	—	90 ft. lbs.	<0°F	N/A	Excellent	Good
9106 Tap Tool	Diocyladiapate, Trichloroethylene	0°F to 410°F	—	90 ft. lbs.	<0°F	N/A	Excellent	Excellent

## PROTECTIVE COATINGS

### INSULATING EPOXY

A tough, flexible coating that protects and insulates exposed wires and electrical windings. Ideal for insulating coils, transformers and other electrical components.

- Air dries in 15 minutes, hardens in 1 hour
- Dielectric strength – up to 2,270 V/mil
- Excellent adhesion and high arc resistance
- Superior to lacquers and acrylics
- Class F thermal resistance
- Allows for motor heat expansion and contraction
- Resists abrasion and wear; will not chip, peel, or become brittle
- Resists oil, water, acids, and alkalis
- Penetrates, coats, and seals in one step

**Uses:** Field coils, motor windings, taped coils, exposed metal, frayed insulation, pitted motor windings, bus bars and switchboard parts, transformers, commutator ends, sealing electrical and electronic components, collector rings, transformers, armatures, and inside walls of control boxes.

CAN SIZE (NET)	WEIGHT	CASE PACK
16-ounce Aerosol (12.5 oz.)	14 lbs.	12 Cans
<b>COLOR SELECTION</b>		
401 Red	402 Black	403 Clear

### 595 UNDERCOATING AND SOUND INSULATOR

AerVOE's Undercoating & Sound Insulator is a quick-drying, rubberized film designed to offer maximum coverage and superior insulation properties against road and chassis noise.

- Tough, flexible coating
- Superior protection against rust, road salt, mild alkali and acids, dust, fumes, and moisture
- Deadens sound
- Coating remains flexible; will not flake or chip off under vibration
- Not available for sale in the state of California

**Uses:** Auto underbodies, trunks, fender and body seams, rust holes, weld joints, gas tanks, fenders, rocker panels, door panels. Can also be used to seal rain gutters, coat tree wounds, for minor roof repairs, driveway cracks, and swamp and tower cooler coatings.

CAN SIZE (NET)	WEIGHT	CASE PACK
20-ounce Aerosol (15 oz.)	16 lbs.	12 Cans

### 6005 BATTERY TERMINAL COATING

Provides a tough, durable coating for battery terminals, cables, and clamps.

- Resists the corrosive effects of battery acid, moisture, dirt, grease, and oil
- Provides an airtight and waterproof insulated coating
- Assures continued high-voltage output
- Prolongs battery life
- Prevents hard starting, current loss, and battery failure
- Adheres to all types of surfaces and remains flexible at low temperatures
- Will not crack, chip, or peel
- Dries quickly and protects instantly
- Insulated seal minimizes leakage

**Uses:** Effective on all types of batteries for auto, cycle, marine, and aircraft. Use on battery terminals, cable connectors, casings and frames, clamps and battery posts.

CAN SIZE (NET)	WEIGHT	CASE PACK
16-ounce Aerosol (12 oz.)	14 lbs.	12 Cans

### 6007 RUST INHIBITOR

Prevents rust on tools, steel stock, and parts. Provides temporary or extended protection of machinery. Great for long term indoor storage.

- Absorbs moisture
- Fortified with lanolin
- Neutralizes acid formed by corrosive atmosphere

**Uses:** Prevents rust on tools, steel stock, parts, and temporary or extended protection of machinery.

CAN SIZE (NET)	WEIGHT	CASE PACK
16-ounce Aerosol (11 oz.)	13 lbs.	12 Cans
Gallon Can	16 lbs.	2 Gallons
5-Gallon Pail	35 lbs.	1 Pail
55-Gallon Drum	354 lbs.	1 Drum



## 6013 CORROSION SUPPRESSANT 101

Provides excellent rust protection for metal parts that must be stored, indoors or outdoors, for long periods of time. Excellent for outdoor metal shipments and outdoor storage.

- Non-sticky, film provides excellent corrosion protection
- Seals out acid, moisture, air, salt water and other corrosive elements
- Neutralizes acid formed by corrosive atmosphere
- Prevents corrosion caused by fingerprints
- Penetrates cracks, assuring complete protection
- Easily removed with a mild solvent
- Does not contain silicone
- Does not contain CFCs, HCFCs, or chlorinated solvents
- Meets MIL-C-16173E, Grade 4

**Uses:** All metal surfaces, marine equipment, farm machinery, construction equipment, electric motors, engines, storage tanks, pipes, dies, molds, parts, tools, vehicle and machinery bodies and frames, containers, cables, industrial parts, electrical equipment, threads, locks, gears, railroad equipment, and sporting equipment.

### CAN SIZE (NET)

16-ounce Aerosol (10.5 oz.)  
Gallon Can  
5-Gallon Pail  
55-Gallon Drum

### WEIGHT

12 lbs.  
18 lbs.  
41 lbs.  
430 lbs.

### CASE PACK

12 Cans  
2 Gallons  
1 Pail  
1 Drum



## 6084 RED INSULATING VARNISH

Flexible, tough, oil-proof film. This insulating varnish is a Class F epoxy ester with a dielectric strength of 1200V/mil wet and 2100 V/mil dry.

- Cures completely in 24 hours
- Darkness of color indicates coating thickness
- Penetrates, coats, and seals in one step
- Class F thermal resistance

**Uses:** For armature and stator windings, high voltage circuits, coating frayed insulation, and to restore dielectric properties lost as a result of wear or damage.

### CAN SIZE (NET)

16-ounce Aerosol (13 oz.)

### WEIGHT

13 lbs.

### CASE PACK

12 Cans



## 8079 DRIVE BELT DRESSING

Prevents belt slippage and glazing for better motor efficiency and longer belt life.

- Restores suppleness and flexibility to belts
- Increases pulling power up to 50%
- Reduces squeaks and slippage by aiding in traction
- Effective on all types of belts, new and used; rubber, canvas, leather, and fabric
- Can be applied to belts while running
- Will not glaze or collect dirt or dust

**Uses:** Industrial belt drives including generators and fans; flat, round, or V-style belts, auto fan, water pump, transmission, power steering, farm machinery, appliance, air conditioners, equipment, and power tool belts.

### CAN SIZE (NET)

16-ounce Aerosol (12 oz.)  
Quart Can

### WEIGHT

13 lbs.  
37 lbs.

### CASE PACK

12 Cans  
12 Quarts

## COPPER ANTI-SEIZE COMPOUNDS

This copper-based anti-seize is designed to lubricate and protect most metals from corrosion and seizure.

- Will not harden, separate, or evaporate
- Protects parts under extreme heat, cold, pressure, steam, and salt water exposure
- Cannot be burned off and will not melt or run out after application
- Provides excellent lubricity and better make-up and breakout torque
- Durable, long-lasting film
- Does not contain clay or soap base thickeners
- Eliminates parts wear and breakage
- Contains the maximum blend of metallic boundary lubricants homogenized into a specially designed semi-synthetic lubricating grease
- Food grade anti-seize is available - see page 30
- Meets MIL-A-907E
- Does not contain CFCs, HCFCs, or chlorinated solvents
- Brush top bottle has angled applicator brush so entire contents can be removed
- Protects against corrosion, seizing, rust, galling, galvanic pitting, and carbon fusing



PRODUCT	CAN SIZE (NET)	WEIGHT	CASE PACK
<b>COPPER</b>			
9120	16-ounce Aerosol (12 oz.)	14 lbs.	12 Cans
9122	8-ounce B/T Bottle	8 lbs.	12 Bottles
9123	1-lb. B/T Bottle	15 lbs.	12 Bottles

## 9105 ANTI-SEIZE COMPOUND

Provides an aerosol delivery of graphite in a thin black film for stud assemblies, flange bolts, cylinder heads, high temperature connections, and manhole lugs. Operating temperature range up to 2000°F (1093°C).

CAN SIZE (NET)	WEIGHT	CASE PACK
16-ounce Aerosol (11 oz.)	13 lbs.	12 Cans

TECHNICAL DATA		COPPER ANTI-SEIZE	ANTI-SEIZE COMPOUND
Color		Copper	Black
Boiling Point	(Aerosol) (Bulk)	-44°F to 500°F 500°F	500°F —
Flash Point	(Aerosol) (Bulk)	-50°F T.C.C. 325°F	<0° —
Specific Gravity	(Aerosol) (Bulk)	0.78 1.24	— —
Operational Temperature Range		-40°F to 2000°F	40°F to 2000°F
Applications		Threaded connections, valves, bushings, sleeves, flanges, machinery, pumps, manifolds, and compressors	Stud assemblies, flange bolts, cylinder heads, high temperature connections, manhole lugs

## AEROSOL CLEANERS USER GUIDE

AERVOE PRODUCT	BASE MATERIALS	FLASH POINT	KB VALUE	EVAPORATION RATE	DIELECTRIC STRENGTH	APPEARANCE	ODOR
399 LFP Cleaner Degreaser	Petroleum Naptha, Glycol Ether	<20°F	80	4	33kV/mm	Thin, non-foaming	Mild
400 NFP Safety Solvent H.D.	Trichlorethylene	None	129	2.6	36kV/mm	Thin, non-foaming	Mild
415 Off Line Contact Cleaner H.D.	Hexane, Ethanol	<0°F	31	8.1	Not applicable	Thin, non-foaming	Mild
420 DustAir™	Tetrafluoroethane	Will not burn	Not applicable	Not applicable	>35kV/mm	Clear Vapor	Mild
590 Carb and Choke Cleaner	Acetone, Heptanes	<0°F	Not evaluated	Not evaluated	Not applicable	Thin, non-foaming	Moderate
591 Low VOC Brake and Parts Cleaner	Petroleum Naptha, Acetone	-4°F	Not evaluated	Not evaluated	Not applicable	Thin, non-foaming	Mild
592 Brake and Parts Cleaner	Petroleum Naptha, Acetone	-4°F	95	6.5	Not applicable	Clear, non-foaming	Mild
860 Glass and Surface Cleaner	Water, Blended Alcohols	None	Not applicable	0.9	Not applicable	Clear, foaming	Floral
5021 Hand-y Towels	No reportable quantities	None	Not applicable	<1	Not applicable	Clear	Slight Citrus
5055 All Purpose Cleaner	Amonia, Water	None	Not applicable	<1	Not applicable	Clear, light yellow	Pine
5070 Cleaner/Degreaser	Water, Serfactants	>200°F	Not applicable	Not applicable	Not applicable	Transparent violet	Citrus
8060 Safety Solvent (NFP)	Trichlorethylene	None	129	2.6	36kV/mm	Thin, non-foaming	Mild
8260 Heavy Duty Citrus Cleaner & Degreaser	Aliphatic Hydrocarbons, DiLimonene	115°F	44	<1	>20kV/mm	Clear	Citrus
8276 Off Line Contact Cleaner	Hexane, Isopropal Alcohol	<0°F	29	6	Not applicable	Clear, colorless	Hydrocarbon
8377 Elect. Component Cleaner (NF)	Dichloroethylene	None	66	8.1	38kV/mm	Clear, colorless	Mild

## CLEANERS / DEGREASERS

### 399 Lfp CLEANER/DEGREASER

This fast-drying, industrial strength solvent is inexpensive and ideal for cleaning and degreasing. Removes grease, oil, wax, adhesives, and other contaminants without leaving a residue. Has a low flash point (Lfp).

- Fast evaporation
- Non-chlorinated
- High-pressure spray action and unique wetting action, penetrates and degreases
- Reduces failures and helps to increase equipment life by eliminating faulty operation of dirty moving parts
- Can be applied while mechanical parts are operating
- Non-corrosive, non-conductive formula displaces moisture
- High dielectric strength of 33kV/mm
- Does not contain CFCs or HCFCs
- Includes extension tube for precision application in hard to reach cracks and crevices

**Uses:** Motors, tools, machinery, metal parts, mechanical equipment, air conditioners, aircraft parts, automotive parts, bearings, chains, packaging machinery, compressors, generators, portable tools, office machinery, pumps, mechanical brakes and clutches, relays, gears, cables, locks, sporting equipment, solenoids, and more.

CAN SIZE (NET)	WEIGHT	CASE PACK
20-ounce Aerosol (15 oz.)	16 lbs.	12 Cans
Gallon Can	16 lbs.	2 Gallons
5-Gallon Pail	37 lbs.	1 Pail
55-Gallon Drum	366 lbs.	1 Drum

### 5070 CLEANER / DEGREASER - WB

A dilutable liquid concentrate developed to meet a variety of applications and surfaces.

- Water-based
- Non-flammable
- Non-butyl concentrate
- Does not contain chlorinated solvents
- Available in drums (5070D), and totes (5070T)

**Uses:** To clean grills, driveways, floors, fiberglass, vinyl, glass, lights, tile, mirrors, etc.

CAN SIZE (NET)	WEIGHT	CASE PACK
1-Quart Can	25 lbs.	12 Quarts
1-Gallon Can	35 lbs.	4 Gallons
5-Gallon Pail	47 lbs.	1 Pail
55-Gallon Drum	485 lbs.	1 Drum

### 400 Nfp SAFETY SOLVENT H.D.

Aervoe 400 Safety Solvent HD effectively removes oil, grease, wax, dirt, and moisture. The high-delivery (H.D.) spray combined with its unique wetting action penetrates inaccessible areas, effectively flushing away contaminants without leaving a residue.

- No-flash point (Nfp)
- Clean warm motors in place
- Can be used on energized equipment
- High dielectric strength of 36kV/mm
- Reduces failures and helps to increase equipment life by eliminating faulty operation of dirty moving parts
- Non-corrosive, non-conductive formula displaces moisture
- Includes extension tube for precision application

**Uses:** Chains, motors, electrical boxes, aircraft parts, machinery, automotive parts, tools, mechanical brakes and clutches, relays, cables, locks, gears, portable tools, radar equipment, generators, bearings, compressors, switch gears, office machinery, pumps, mechanical brakes and clutches, and more.

CAN SIZE (NET)	WEIGHT	CASE PACK
20-ounce Aerosol (20 oz.)	21 lbs.	12 Cans



## E-Z-EST® PRODUCTS

### Speed Dip® Silver Cleaner

This instant silver cleaner removes tarnish from sterling silver and silverplate without rubbing.

- Very economical, may be used over and over
- Fast acting, cleans instantly without rubbing
- Can be used on sterling, silverplate, duralite, gold, and copper
- Available in bulk packaging on request

CAN SIZE (NET)	WEIGHT	CASE PACK
1951 10-oz. Liquid	13 lbs.	12 Jars
1951G Gallon	20 lbs.	2 Gallons

### Coin Cleaner

E-Z-Est Coin Cleaner is unmatched in its cleaning ability and is invaluable to the numismatist. There is no equal for cleaning coins.

- Special formula removes tarnish & finger marks quickly
- Coins stay bright long after cleaning
- Versatile - product has characteristics that lend itself to a multitude of applications, including the forensics field
- Cleans copper, gold, and silver coins

CAN SIZE (NET)	WEIGHT	CASE PACK
1985 5-oz. Liquid - 12 each	6 lbs.	12 Jars
1985G Gallon	20 lbs.	2 Gallons





### 8060 Nfp SAFETY SOLVENT

This quick drying, no flash point (Nfp) product removes grease deposits, oil, metallic particles, carbon dust, and other dangerous materials, and prevents costly flash-overs.

- Non-flammable, non-corrosive formula
- Can be used on energized equipment
- Fast evaporation; does not leave residues
- High dielectric 36kV/mm
- Clean warm motors in place

**Uses:** Safe for cleaning electric motors, lathes, mining equipment, grease fittings, molds, switches, generators, relays, brake linings, rheostats, and fuse holders.

CAN SIZE (NET)	WEIGHT	CASE PACK
20-ounce Aerosol (20 oz.)	21 lbs.	12 Cans
Gallon Can	27 lbs.	2 Gallons
5-Gallon Pail	65 lbs.	1 Pail
55-Gallon Drum	652 lbs.	1 Drum

### 8260 HEAVY DUTY CITRUS CLEANER /DEGREASER

A heavy duty degreaser that is safe on most plastics.

- Citrus based cleaner
- Wipes off without rinsing
- Does not leave a residue
- Does not contain CFCs, HCFCs, or chlorinated solvents

**Uses:** Removes grease and grime from alternators, pulleys, chains, brakes, engines, forklifts, etc.

CAN SIZE (NET)	WEIGHT	CASE PACK
20-ounce Aerosol (15 oz.)	16 lbs.	12 Cans
1-Gallon Can	16 lbs.	2 Gallons
5-Gallon Pail	37 lbs.	1 Pail
55-Gallon Drum	375 lbs.	1 Drum

## CONTACT CLEANERS

### 415 OFF-LINE CONTACT CLEANER H.D.

This fast evaporating cleaner is highly refined and designed for use on high-tech electronic hardware and PCBs and PWBs. It is safe for use on metal, plastics, rubber, and glass surfaces.

- Flammable, not to be used on energized equipment or in operation
- Quick, penetrating action, leaves no residue
- Plastic-safe
- Effectively removes grease, oil, dirt, and other contaminants, displaces water and moisture
- Includes extension tube for precision application
- High-delivery spray action assures complete saturation
- Unique wetting action cleans the finest of instruments, contacts, relays, precision mechanical or electrical solenoids, and other delicate hardware

**Uses:** Electrical components, connectors, contacts, magnetic tape heads, semiconductor assemblies, precision instruments, printed circuits, computer components, relays and controls.

CAN SIZE (NET)	WEIGHT	CASE PACK
20-ounce Aerosol (15 oz.)	17 lbs.	12 Cans
Gallon Can	14 lbs.	2 Gallons
5-Gallon Pail	38 lbs.	1 Pail
55-Gallon Drum	375 lbs.	1 Drum

### 8377 ELECT. COMPONENT CLEANER

This no-flash, fast penetrating, high pressure cleaner is designed for precision cleaning on electronic hardware and printed circuit boards.

- Effectively removes grease, oil, dirt, and other contaminants
- No flash cleaner
- Dielectric strength 26kV
- Evaporates quickly without leaving a film or residue
- Safe on most plastics, coatings, or paints
- Includes extension tube for precision application
- Low surface tension allows for easy penetration and eliminates the need for disassembly of component parts
- Restores and maintains original electronic values and constants

**Uses:** Electrical contacts and terminals, semiconductor assemblies, precision instruments, circuit breakers, printed circuits, switches, relays and controls, mechanical or electrical solenoids, telephone equipment, motors, sensors, and televisions.

CAN SIZE (NET)	WEIGHT	CASE PACK
16-ounce Aerosol (14 oz.)	15 lbs.	12 Cans

### 8276 OFF-LINE CONTACT CLEANER

A fast-evaporating, low-odor cleaner for off-line equipment maintenance.

- Does not leave a film or residue
- Safe on most plastics and metals
- Does not contain CFCs, HCFCs, or chlorinated solvents

**Uses:** To be used on out-of-service electronic components. For relays, terminals, switches, etc.

CAN SIZE (NET)	WEIGHT	CASE PACK
16-ounce Aerosol (10.9 oz.)	13 lbs.	12 Cans

## ADHESIVES

### 8177 MULTIPURPOSE ADHESIVE

Provides holding power on most surfaces, rough or smooth.

- Fast drying, just spray and stick
- California VOC-compliant
- Repositionable - flexible
- Best for non-porous surfaces
- Conical misty spray pattern
- Colorless

**Uses:** Ideal for light production work, especially the temporary pinning alignment of parts for final assembly. Adheres to paper, cardboard, wood, or metals.

CAN SIZE (NET)	WEIGHT	CASE PACK
20-ounce Aerosol (14 oz.)	15 lbs.	12 Cans

### 8190 HI-STRENGTH ADHESIVE

This high-strength, industrial grade adhesive is ideal for extra-strong bonding of materials to a variety of surfaces.

- California VOC-compliant
- Low Soak-in
- Best for porous surfaces
- Extremely fast dry time: 1-minute to tack
- Web fan spray
- Withstands temperatures up to 130°F (54°C)
- Flexible and waterproof
- High sheer and peel strength

**Uses:** For bonding insulation, hard plastic, wood, metal, fabric, and paper.

CAN SIZE (NET)	WEIGHT	CASE PACK
20-ounce Aerosol (12 oz.)	14 lbs.	12 Cans

### 8192 CONTACT ADHESIVE

A high performance, two-sided contact adhesive that will permanently affix flexible and rigid materials, such as laminates, many plastics, metal, and wood.

- Web Spray
- Bonds in one to three minutes
- 15% solids
- Withstands temperatures up to 190°F (88°C)
- California VOC compliant

**Uses:** For auto trim applications, van conversions, cabinet shops, and manufacturing assembly operations. Not recommended for use on vinyl.

CAN SIZE (NET)	WEIGHT	CASE PACK
20-ounce Aerosol (14 oz.)	15 lbs.	12 Cans

### 8178 EPS FOAM/CONCRETE ADHESIVE

Aerove's unique pressure sensitive, upside down spray adhesive provides fast tacking and extra-strong bonding or laminating of expanded polystyrene (EPS).

- Product is flexible for adhesion to smooth or rough substrates
- Quick set up allows for faster construction times
- Binds both porous and nonporous surfaces
- Will not damage EPS
- Provides temporary light-duty performance or permanent bonds in heavy-duty applications
- Resistant to UV, heat, and water damage
- Stain free, mild odor formulation
- Not available for sale in California

**Uses:** Can be used throughout general industry and construction for bonding EPS to concrete and other surfaces.

CAN SIZE (NET)	WEIGHT	CASE PACK
20-ounce Aerosol (14 oz.)	15 lbs.	12 Cans



# NON-DESTRUCTIVE TEST INSPECTION SYSTEMS

Crown die penetrant inspection systems quickly locate cracks and defects in metals, glass, and plastics. Ideal for NDT testing in the fields of welding, automotive (manufacturing and repair), aircraft, airlines, railroads, government, oil drilling, foundry, fastener, construction machinery, etc.

## CONVENIENT AND PORTABLE TEST KITS

Group 1 and 1A Inspection Kits

Includes carrying case, instructions, 4 cans Cleaner, 2 cans Penetrant, 2 cans Developer



Fault Finder Kit Group 1A - #1010  
 Fault Finder Kit Group 1 - #1070

### GROUP 1A (INSPECTION KIT #1010)

1. Cleaner #1011
2. Penetrant #1012
3. Developer #1013

Conforms to MIL-I-25135. Active ingredients meet chlorine and sulfur requirements of NAVSHIPS 250-1500 and MIL STD 271.

Group 1A is certified low in chlorine and sulfur-bearing solvents. Group 1A is our *least flammable system* because of its carrier solvents.

CAN SIZE 12-oz. aerosol (Net)	WEIGHT	CASE PACK
1011 Cleaner (8.5 oz.)*	10 lbs.	12 Cans
1012 Penetrant (8.5 oz.)*	10 lbs.	12 Cans
1013 Developer (8.5 oz.)*	11 lbs.	12 Cans

\*Only available for #1010 kit; these products also available in gallon 2-packs; add "G" to part number to order.

### GROUP 1 (INSPECTION KIT #1070)

1. Cleaner #1071
2. Penetrant #1072
3. Developer #1073

Does not contain chlorine or sulfur-bearing solvents. Group 1 was developed specifically for test materials where halogenated safety solvents are not permitted.

This system meets RDT F-3-6T standard as established by the Atomic Energy Commission. Conforms to MIL-I-25135. Active ingredients meet chlorine and sulfur requirements of RDT F-3-6T Standard, NAVSHIPS 250-1500 and MIL STD 271.

CAN SIZE 12-oz. aerosol (Net)	WEIGHT	CASE PACK
1071 Cleaner (7.5 oz.)	10 lbs.	12 Cans
1072 Penetrant (8.5 oz.)	11 lbs.	12 Cans
1073 Developer (7.5 oz.)	10 lbs.	12 Cans



1. Spray on Cleaner and wipe off

2. Spray on Penetrant and allow time to set.

3. Wipe excess Penetrant from surface with Cleaner.

4. Spray on thin layer of white Developer.

5. Visual inspection. Red cracks and other faults will appear in white developer area.

## MISCELLANEOUS

### 420 DUST AIR™

Aervoe Dust Air™ is a pure, non-CFC controlled air source that removes dust and airborne contaminants from delicate instruments without scratching the surface.

- High-delivery trigger spray action
- Includes extension tube for precision application in hard to reach areas
- Non-abrasive
- Safe for use on plastics
- Energized equipment use only
- Effectively removes microscopic particles of lint, ferrous oxide, and other contaminants
- Ideal for use on delicate components and instruments where residual entrapment could be a problem
- Dirt, dust, pollen, and other debris are forcefully dislodged from delicate instruments

**Uses:** Electronics, laboratory equipment, data processing and optical, precision mechanical parts, personal computers, electrical circuitry, and photographic equipment.

**CAN SIZE (NET)**  
12-ounce Aerosol (10 oz.)

**WEIGHT**  
6 lbs.

**CASE PACK**  
6 Cans

### 590 CARB & CHOKE CLEANER

Aervoe's Carb & Choke Cleaner is a fast-acting blend of solvents that maximizes carburetor performance.

- Eliminates rough idling, stalling, engine run-on, and starting hesitation
- Quick and easy to use
- Removes varnish build-up; does not leave a film or residue
- Will not harm catalytic converters or oxygen sensors
- Cleans heat risers by dissolving buildup around shaft
- Does not contain CFC's, HCFC's, or chlorinated solvents
- Includes extension tube for precision application in hard to reach areas
- Meets VOC requirements in all 50 states, including CARB

**Uses:** PVC valves, automatic chokes, carburetor components, crankcase breather elements, exhaust gas recycling valves (ERGs) and intake parts. Can be used in any carburetor or fuel injected gasoline engine.

**CAN SIZE (NET)**  
16-ounce Aerosol (12 oz.)

**WEIGHT**  
14 lbs.

**CASE PACK**  
12 Cans



### 591 LOW VOC BRAKE & PARTS CLEANER <10% VOC 592 BRAKE & PARTS CLEANER <20% VOC

This non-corrosive degreaser is effective in removing oil, grease, wax, dirt, and moisture from brake drums, linings, and pads. Low VOC version meets the stringent California VOC and SCAQMD Requirements.

- Non-chlorinated
- Dries in less than 2 minutes
- High-pressure action and unique wetting properties degreases and penetrates inaccessible areas
- Includes extension tube for precision application
- Stops annoying brake squeal
- Reduces airborne asbestos dust
- Keeps brake shoe pads at top level of performance
- Does not contain CFCs, HCFCs, or chlorinated solvents

**Uses:** Drum and disk-type brakes. Can also be used for cleaning chains, gears, bearings, clutches, U-joints, and other areas where grease and oil have accumulated.

**CAN SIZE (NET)**  
20-ounce Aerosol (14 oz.)  
Gallon Can  
5-Gallon Pail  
55-Gallon Drum

**WEIGHT**  
16 lbs.  
16 lbs.  
66 lbs.  
611 lbs.

**CASE PACK**  
12 Cans  
2 Gallons  
1 Pail  
1 Drum

### 860 GLASS & SURFACE CLEANER

This industrial glass and surface cleaner is a fast acting foam that cuts through dirt, grease, and grime to clean a variety of surfaces.

- Wipes off to a bright and sparkling, streak-free finish
- Removes greasy residue, fingerprints, road and factory film, and grime
- Will not scratch or harm glass, Plexiglas, or other plastic materials; will not harm painted surfaces
- Retards fogging

**Uses:** Glass and baked enamel objects, auto windshields, porcelain, vinyl surfaces, Plexiglas, laminated surfaces, countertops, tiles, stainless steel, chrome, bumpers, safety glass, and showcases.

**CAN SIZE (NET)**  
20-ounce Aerosol (19 oz.)  
Gallon Can  
5-Gallon Pail  
55-Gallon Drum

**WEIGHT**  
19 lbs.  
19 lbs.  
45 lbs.  
452 lbs.

**CASE PACK**  
12 Cans  
2 Gallons  
1 Pail  
1 Drum

### 5055 ALL PURPOSE CLEANER

This water and ammonia based cleaner provides a low foaming action cleaner for breaking up grime.

- Cuts through grease
- Cleans and polishes
- USDA C-1
- Excellent on granite surfaces

**Uses:** For hard to clean spots on wood, metal, tile, porcelain, plastic, chrome, etc.

**CAN SIZE (NET)**  
16-ounce Aerosol (15 oz.)

**WEIGHT**  
15 lbs.

**CASE PACK**  
12 Cans

**HAND-Y CLEANING TOWELS**

These waterless cleaning towels are lint-free, and are packaged in a convenient tub with a dispenser lid for easy access, or handy single-towel foil packs that go anywhere. The Hand-Y Pro Towel is smooth on one side and rough on the other for scrubbing grit action.

- Same great Crown towel
- Replaces many light hand cleaners
- Cleans hands, tools, equipment, and more
- Pre-moistened, no need for water
- Fresh citrus scent

**Uses:** Ideal for removing adhesives, grease, grime, ink, lubricants, tar, and other industrial stains and soils.

PACKAGE SIZE (NET)	WEIGHT	CASE PACK
5021 Hand-Y Cleaning Towels (75-Towel Tub)	17 lbs.	6 Tubs
5025 Hand-Y Pro Towels (75-Towel Tub)	17 lbs.	6 Tubs



## MOLD SPECIALTIES



Aervoe's high-quality mold specialties and release agents provide a variety of choices for every imaginable molding operation application.

### 3090 TOOL AND DIE SAVER

Protect stored tools and dies from moisture during storage. Ideal for long-term indoor storage.

- Absorbs moisture and neutralizes acid formed by corrosive atmosphere
- Easy to remove
- Delivers a greasy, elastic film that won't harden or crack with age
- Provides protection for indoor or outdoor storage

**Uses:** Good for chucks, set-up jigs, tools, stored metal molds and dies, and seldom-used parts.

**CAN SIZE (NET)**  
16-ounce Aerosol (11 oz.)

**WEIGHT**  
13 lbs.

**CASE PACK**  
12 Cans

### 3091 MOLD AND DIE PROTECTOR

Maximum storage protection for valuable tools, jigs, hardware, molds, dies, and bare metal surfaces. Excellent for long distance shipment.

- Translucent waxy film that protects against dust, grime, and moisture
- Neutralizes fingerprints
- Ideal for short- or long-term storage
- Penetrates metal pores and spreads over entire surface to seal out air and moisture

**Uses:** Bare metal surfaces, molds, dies, tools, jigs, etc.

**CAN SIZE (NET)**  
16-ounce Aerosol (10.5 oz.)

**WEIGHT**  
12 lbs.

**CASE PACK**  
12 Cans

### 3095 MOLD CLEANER

A solvent-based spray cleaner for general cleaning of metal molds.

- For in-place cleaning of all metal molds, or for superior clean-up prior to storage
- Removes all grease, oil, and other soils that cause molding imperfections
- Does not leave a residue, and won't interfere with molding operations

**Uses:** On metal molds, dies, pins, jigs, machinery, and mechanical equipment.

**CAN SIZE (NET)**  
16-ounce Aerosol (10.5 oz.)

**WEIGHT**  
12 lbs.

**CASE PACK**  
12 Cans

## AERVOE MOLD RELEASES

A high quality line of aerosol, silicone, non-silicone, food-grade, and paintable mold releases that are **NON-FLAMMABLE** and **NON-CHLORINATED**. All are packaged with the Spray-Any-Way valve to accommodate application in any position. In this section of the catalog, Aervoe Mold Releases are indicated in **GREEN**.

## RELIABLE MOLD RELEASES

Reliable Releases are low cost, **FLAMMABLE** and **NON-CHLORINATED** mold releases with low toxicity and environmentally friendly attributes. In this section of the catalog, Reliable Mold Releases are indicated in **RED**.

### SILICONE MOLD RELEASES

Industrial strength release agents that are economically priced and help resist costly breakdowns.

- Silicone formulas
- Heat stable at temperatures up to 500°F (260°C)
- Increases molding efficiencies
- Allows for multiple parts releases per application
- Ideal for hot or cold molding processes
- Non-staining, non-corrosive formulas
- Low toxicity

**Uses:** Plastic injection molders, compression molders, extruders, and foundries, blow molders, investment castings, and candle molders. Recommended for use on A.B.S. resins, acrylics, wax, rubber, polyesters, cellulose and polystyrenes.

### 2011 FOOD GRADE SILICONE MOLD RELEASE

Food grade silicone release that is ideal for all polypropylene and polyurethane moldings, including toys, food containers, closures, etc.

- Non-staining, non-corrosive formula
- Ideal for hot or cold molds

**Uses:** Plastic injection molders, compression molders, extruders, and foundries, blow molders, investment castings, and candle molders. Provides excellent lubricating properties for guides, saws, conveyors, and rollers on packaging equipment.

CAN SIZE (NET)	WEIGHT	CASE PACK
16-ounce Aerosol (12 oz.)	13 lbs.	12 Cans

PROD #	CAN SIZE (NET)	WEIGHT	CASE PACK
2010	General Purpose Silicone 16-ounce Aerosol (12 oz.)	13 lbs.	12 Cans
2012	Heavy Duty Silicone 16-ounce Aerosol (12 oz.)	13 lbs.	12 Cans
3423	General Purpose Silicone 16-ounce Aerosol (13 oz.)	15 lbs.	12 Cans
3445	Heavy Duty Silicone 16-ounce Aerosol (13 oz.)	15 lbs.	12 Cans





## PAINTABLE MOLD RELEASES

Specially formulated paintable silicone fluids provide excellent release properties that are ideal for all types of plastics where decorating is required after molding.

- Odorless, non-staining, non-corrosive formula
- Heat stable up to 500°F (260°C)
- Long lasting, anti-stick film
- Allows for multiple part releases per application
- Parts can be readily decorated with all types of solvent-based paints, enamels, and lacquers
- Increases molding efficiency
- Ideal for injection molding and hot or cold molding processes
- Compatible with most moldable resins, elastomer compounds, rubber, wax, and plastic

**Uses:** Hot or cold molding processes for rubber, polystyrenes, polyurethane foams, plastic, metal castings and elastomeric materials.

PROD #	CAN SIZE (NET)	WEIGHT	CASE PACK
2013 Paintable Silicone	16-ounce Aerosol (12 oz.)	13 lbs.	12 Cans
3460 Paintable	20-ounce Aerosol (13 oz.)	15 lbs.	12 Cans

## MOLD RELEASE COMPARISON RESULTS

Test results shown represent independent tests of mold releases by Plastics Product Review. The numbers reflect an average number of shots before part sticking occurs.

BRAND	PRODUCT	ABS	TPE	PP	ALL MATERIALS
Aervoe	Heavy Duty	7.8	7.0	11.4	8.73
Brand K	Heavy Duty	7.2	6.8	11.4	8.47
Brand D	Frekote	4.4	10.0	11.8	8.73

## 2014 T.F.E. DRY FILM MOLD RELEASE

This economical release provides excellent anti-stick properties that leaves a thin, dry film which doesn't transfer to finished parts.

- Non-silicone formula; contains PTFE
- Provides multiple releases per application
- Will not harm most plastics or attack rubber, paints, or metals
- Compatible with most urethanes and styrenes, moldable resins and elastomeric compounds
- Does not contain ozone depleting substances
- Will not interfere with post-finishing operations; parts can be painted, stenciled, hot stamped, glued, plated, or otherwise decorated
- Heat stable up to 500°F (260°C)
- Meets MIL-L-60326 MU Type II performance requirements

**Uses:** Nylon, rubber, foam, some plastics, metal, phenolic resins, filament windings, epoxy potting and encapsulating, polypropylenes, polystyrenes and polyurethanes.

CAN SIZE (NET)	WEIGHT	CASE PACK
16-ounce Aerosol (12 oz.)	13 lbs.	12 Cans

## 2015 ZINC STEARATE DRY POWDER MOLD RELEASE

High-grade, finely milled, dry zinc powder releases that controls hot spots, gobbing, and reduces rejected parts.

- Heat stable at temperatures up to 450°F (232°C)
- Repels dust and increases molding efficiency
- Ideal for thermosetting and thermoplastic applications
- Will not interfere with post-finishing operations; parts can be painted, stenciled, hot stamped, glued, plated, or otherwise decorated
- Excellent for start up operations
- Will not harm most plastics

**Uses:** Clear styrenes and acrylics, reflex lenses, rubber manufacturing and polysulfones, polycarbonates (LEXAN), most plastic molds, polystyrenes, molding ceramics and polypropylenes.

CAN SIZE (NET)	WEIGHT	CASE PACK
16-ounce Aerosol (12 oz.)	13 lbs.	12 Cans



### PAINTABLE LECITHIN MOLD RELEASE

Designed for quick, clean releases on thermosets and thermoplastics.

- Will not interfere with post-finishing operations; parts can be painted, stenciled, hot stamped, glued, plated, or otherwise decorated
- Resists crazing and stress cracking
- Will not mar clear polyethylene, polystyrene, or other plastics
- Heat stable up to 500°F (260°C)

**Uses:** Plastic wrap cutting equipment, compression molding, gaskets and seals for tank closures, toy and furniture manufacturing, urethanes, epoxy resins, polyesters and polystyrenes.

PROD #	CAN SIZE (NET)	WEIGHT	CASE PACK
2016	Paintable Lecithin 16-ounce Aerosol (12 oz.)	13 lbs.	12 Cans
3452	Lecithin 20-ounce Aerosol (13 oz.)	15 lbs.	12 Cans
3452G	Gallon Can	14 lbs.	2 Gallons

### 3470 MOLD RELEASE & PROTECTOR

Wax-based mold release that eliminates part imperfections. Perfect for overnight protection - helps to eliminate flash rust caused from condensation after shut-down. Then at startup no need to remove, just shoot mold clean.

- Ideal for epoxy molding
- Ideal for manufacturers of flexible and rigid polyurethane
- Wax-based
- Overnight protection
- No silicones

**Uses:** Epoxy molding, polyurethane, and phenolics.

CAN SIZE (NET)	WEIGHT	CASE PACK
20-ounce Aerosol (13 oz.)	15 lbs.	12 Cans

MOLDING MATERIALS	SILICONE 3% - 5%	DRY FILM LUBRICANT	PAINTABLE	TFE	ZINC STEARATE	LECITHIN	MOLD RELEASE & PROTECTOR
ABS	●		●			●	
Acetals	●	●	●			●	
Acrylic	●	●	●			●	
Epoxy				●			●
Lexan	●	●	●		●	●	
Melamine		●	●	●		●	
Nylon	●	●	●			●	
Nurene	●					●	
Phenolics	●	●	●	●		●	●
Polyamide	●	●	●		●		
Polycarbonate	●	●	●		●	●	
Polyester	●	●	●			●	
Polyethylene	●	●	●			●	
Polypropylene	●	●	●	●	●	●	
Polystyrene	●	●	●	●	●	●	
Polyurethane	●			●		●	●
Polyvinyl Chloride	●	●	●		●	●	
Post Decorating	●	●	●	●	●	●	
Rubber	●	●	●	●	●		

Note: Products shown in one-gallon cans are also available in 5-gallon and 55-gallon containers.

# SHIPPING ESSENTIALS

Aervoe Shipping Essentials® were designed for ease of use in small and medium size shipping/receiving operations. Fast-drying, highly opaque Stencil and Cover-Up Inks and two industrial grade adhesives meet the requirements of the most demanding users.

## STENCIL INKS AND COVER-UP INKS

Aervoe Stencil and Cover-Up Inks are fast-drying, highly opaque coatings for use where product coding, stenciling, color coding, applying instructional information or covering over old markings is required.

- Dry to touch in 3 minutes; allows for fast handling in production lines
- Complete coverage in one application
- Will not smear or smudge
- Hot or cold applications
- Water proof and weather resistant
- Provides excellent outdoor color retention
- Can be applied to virtually any porous or non-porous surface
- Matched to Fed Std. 595 colors
- Meets MIL-A-A-208A

**Uses:** Corrugated boxes, cartons, paper, fabrics, wood, plastics, stone, concrete, asphalt, metals, glass, masonry, wood crates, steel coils, fiber or steel drums, and lumber.

CAN SIZE (NET)	WEIGHT	CASE PACK
16-ounce Aerosol (12 oz.)	14 lbs.	12 Cans

### COLOR SELECTION

#### Stencil Inks

2801 Red	2803 Blue	2806 Black
2802 Yellow	2805 Orange	2807 White

#### Cover-Up Inks

2811 Tan Cover-Up

## 875 LABEL ADHESIVE

Aervoe Label Adhesive is formulated for permanent or temporary bonding of a variety of materials to painted, unpainted, smooth, or rough surfaces.

- Fast-drying, colorless adhesive adheres in seconds
- Provides immediate grab with low soak in characteristics
- Provides a very long tack range
- Will not bleed, stain, or wrinkle
- Bonds porous and non-porous surfaces
- Misty conical spray
- Allows for material repositioning
- Does not contain chlorinated solvents or ozone depleting substances
- California VOC compliant

**Uses:** Lightweight materials such as labels, paper, foam, rubber, cloth, cardboard, stencils, felt, fabric, arts and crafts, photographic prints, acetate, foil, and most plastics.

CAN SIZE (NET)	WEIGHT	CASE PACK
20-ounce Aerosol (14 oz.)	15 lbs.	12 Cans

## 876 CARTON ADHESIVE

This high-strength industrial adhesive is specially formulated for either temporary or permanent bonding to uneven or porous surfaces and weighted materials.

- Strong, flexible, and waterproof
- Provides immediate grab with low soak in characteristics
- Wide web spray pattern
- Will not bleed, stain or wrinkle
- For permanent or temporary bonds
- Quick set up allows for faster production times
- Effectively bonds materials such as leather, cardboard, most plastics, polyethylene sheeting and cloth
- Does not contain chlorinated solvents or ozone depleting substances
- California VOC compliant

**Uses:** Use for carton sealing, fiberglass insulation, weather stripping, felt bonding, label application, truck and aircraft interiors, tacking drop cloths, bonding gaskets in water pumps, adhering upholstery, metal-to-metal contact applications and decorative laminates.

CAN SIZE (NET)	WEIGHT	CASE PACK
20-ounce Aerosol (12 oz.)	14 lbs.	12 Cans



# UTILITY/MUNICIPAL SPECIALTY PRODUCTS

Aervoe Industries offers a high quality comprehensive line of outside plant maintenance products specifically for utility and municipal applications. These specialized formulations were designed to meet demanding outdoor maintenance applications and provide the superior product characteristics that customers have come to expect from Aervoe.

## 862 HORNET & WASP SPRAY

Use this fast-acting, powerful aerosol spray to saturate nests instantly and eliminate hornets, wasps, and yellow jackets from inside (attics and other areas where nests are built) and outdoors.



- USDA F-2
- Sprays up to 20 feet; pinpoint stream reaches dense and hard to reach cracks and crevices
- High-delivery valve for complete saturation
- High percentage of active ingredient ensures the best knockdown and kill rate
- High dielectric strength of 41kV/mm
- EPA Reg. No. 11623-38-27417
- Lasting residual deposit prevents reinfestation for weeks
- Approved for sale in the state of California
- Not available for sale in Canada

**Uses:** Ideal on utility meters and boxes, outside surfaces of screens, doors and window frames, nesting areas in shrubs and bushes, telephone poles and eaves. Also for use at golf courses, picnic grounds, beaches, warehouses, and storage areas where food is not exposed.

**CAN SIZE (NET)** 20-oz Aerosol (14 oz.) **WEIGHT** 17 lbs. **CASE PACK** 12 Cans



## INSECT REPELLENT

Aervoe's Insect Repellent is available in individually packaged, pre-treated towels.



### FOIL-PACK TOWEL

- 30% DEET
- EPA Reg. #11694-111-27417, EPA Est. #11694-KS-1
- Not available for sale in Canada

**Uses:** Provides hours of protection from mosquitoes, biting flies, ticks, chiggers, and fleas. Apply directly to clothes or skin. Frequent applications are not necessary.

**CAN SIZE (NET)**  
885 Foil-Pack Towel (8" x 10")

**WEIGHT**  
4 lbs.

**CASE PACK**  
100 Towels



## 889 SUNSCREEN TOWEL

Sunscreen protection in an individually packaged, pre-treated towel.

- SPF 30
- Blocks UVA and UVB rays
- Water resistant
- No greasy residue
- Reduces skin damage and premature aging that occurs with unprotected skin

**Uses:** On all exposed skin areas.

**PKG. SIZE (NET)**  
Foil Pack Towel (8" X 10")

**WEIGHT**  
4 lbs.

**CASE PACK**  
100 Towels

## 5062 ANTI-VANDAL SPRAY

A clear spray blend of solvents that removes lipstick, pencil, ink, crayon, and spray paint from a variety of hard surfaces.

- Ideal for public areas prone to graffiti abuse
- Removes stubborn marks from road signs, washrooms, buildings, sidewalks, underpasses, and a variety of other surfaces
- Safe for use on most hard, unpainted surfaces, including concrete, brick, wood, fiberglass, ceramic tile, Formica, and some plastics
- Eliminates the need to sandblast and grind marks off concrete and brick surfaces

**Uses:** For use on tile, brick, aluminum, steel, granite, marble, Formica, and dozens of other hard surfaces. Ideal for removing unwanted marks from road signs, metal panels, washrooms, public buildings, sidewalks, underpasses, school locker rooms, transit system buildings and vehicles, and rail cars.

**CAN SIZE (NET)**  
16-ounce Aerosol (14 oz.)

**WEIGHT**  
15 lbs.

**CASE PACK**  
12 Cans

## 5205 WATERWORKS COATINGS REMOVER

Crown Waterworks Coatings Remover has a unique ability to utilize the physical energy released by chemical reactions to break the bond between the coating and the substrate, which lifts the paint off and allows it to be washed away.

- Water-based paint and varnish remover
- Easy clean-up
- Works on most paints
- Easy on the environment

**Uses:** Effectively removes paint from steel, aluminum, and other alloys, wood, masonry, and a variety of other substrates. Performs effectively on polyurethane, urethane, epoxy, lacquer, varnish, alkyds, and latex paints.

**CAN SIZE (NET)**  
20-ounce Aerosol (14 oz.)

**WEIGHT**  
16 lbs.

**CASE PACK**  
12 Cans



## 5063 GRAFFITI REMOVER TOWEL

This industrial strength towel removes the most stubborn graffiti (such as spray paint, ink, crayon, lipstick, and pencil) from most hard surfaces. 30 towels per tub.

- Eliminates sandblasting or grinding
- Use on walls, signs, doors, aluminum, steel, brass, marble, and more
- Works on public phones, buildings, restrooms, formica
- No need for water; no rinsing require

**Uses:** Removes spray paint, ink, crayon, lipstick, and pencil.

**TUB SIZE (NET)**  
30-Towel Tub

**WEIGHT**  
12 lbs.

**CASE PACK**  
6 Tubs



# Sprā-tool® Spray Gun

Provides fast, professional results. The Sprā-tool® operates on the same principle as commercial spray guns without the bulky equipment. Its unique design will atomize nearly any liquid, including latex paint. Fast action trigger maintains constant pressure for a smooth, professional-looking finish.

## APPLICATIONS

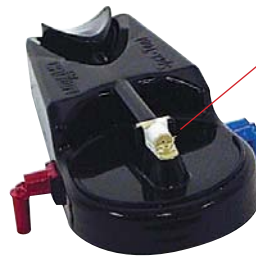
- Homeowners can purchase any color latex paint and use the Sprā-tool® at home
- Contractors and maintenance workers needing the perfect touchup tool can purchase custom colors and use on the job site
- Perfect for stain or varnish projects



## TIP CHOICES

- Red - high delivery
- White - regular delivery
- Blue - fine mist

Interchangeable spray tip inserts



Sprā-tool® Snap-on Head #8213  
(extra insert spray tips n/c)

- No wires, hoses, batteries, or bulky compressors
- Interchangeable spray tip inserts
- Sprays most liquids, including higher-viscosity paints such as latex (thin 50% for proper operation)
- Ideal for fast drying, short-life epoxies
- Controlled spray pattern provides even coverage
- Convenient size with resealable poly jar
- Safe to transport
- Fast clean-up, no brushes, rollers, or pans

**Uses:** Cover scratches and paint blemishes on pick ups, forklifts, antique cars, buses, bikes, boats, walls, trim, doors, etc. A quick and easy way to refinish shutters, decks, outdoor furniture, flag poles, craft items, etc. Can also be used to apply insecticides to protect plants from insects and diseases.

## Clamshell Packaging



Fill with desired liquid



Sprā-tool® Power Pack #8211



Sprā-tool® Jar with cap #8212

PROD #	DESCRIPTION	WEIGHT	CASE PACK
8209	Sprā-tool® Kit	7 lbs.	6 Sets
8211	Sprā-tool® Power Pack 12-oz. (6.5-oz.net)	9 lbs.	12 Cans
8212	Sprā-tool® Jar with Cap	2 lbs.	12 Sets
8213	Sprā-tool® Snap-on Head and Tips	1 lb.	1 Head

# BULK DELIVERY SYSTEMS

## GPT (GIANT PRESSURIZED TANK)

Designed to deliver the ultimate in efficiency and performance for a wide variety of industrial and OEM applications. The GPT provides the convenience of an aerosol spray with the cost savings of a longer lasting bulk container.

- Refillable 5-gallon tanks minimize storage concerns
- Eliminates aerosol can disposal issues
- Delivers the ultimate in efficiency and performance
- Disperses cleaners, lubricants and mold release agents
- Spray valve and tip match actual aerosol can components
- Ideal for industrial and O.E.M. use

Please refer to individual product descriptions for specific application and GPT packaging information.

GPT HARDWARE	DESCRIPTION	WEIGHT
GPT 100	23 lb. Empty Tank	23 lbs.
GPT 120	Sprayer Housing and Hose Assembly	6 lbs.
GPT 121	Sprayer Housing Only	2 lbs.
GPT 122	Hose Only	1 lbs.



## GPT PRODUCT AVAILABILITY

PRODUCT CODE	DESCRIPTION	PRODUCT CODE	DESCRIPTION
399 GPT	Lfp Cleaner/Degreaser	3423 GPT	G.P.Silicone Mold Release
400 GPT	Nfp Safety Solvent H.D.(High Delivery)	3445 GPT	Heavy Duty Silicone Mold Release
415 GPT	Off Line Contact Cleaner H.D. (F)	3452 GPT	Lecithin Mold Release
590 GPT	Carb & Choke Cleaner	3452 CO <sub>2</sub> GPT	Lecithin Mold Release (with CO <sub>2</sub> ) (Mixture of hydrocarbon and CO <sub>2</sub> propellants)
592 GPT	Brake Cleaner	3460 GPT	Paintable Mold Release
931 GPT	Lube Eze™	3470 GPT	Mold Release and Protector
2010 GPT	G.P.Silicone Mold Release	5062 GPT	Anti-Vandal Spray
2011 GPT	F.G.Silicone Mold Release	6030 GPT	Penetrating Oil
2012 GPT	H.D.Silicone Mold Release	8034 GPT	General Purpose Silicone Lube
2013 GPT	Paintable Silicone Mold Release	8036 GPT	Food Grade Silicone Lube
3091 GPT	Mold & Die Protector	8060 GPT	NFP Safety Solvent
3095 GPT	Mold Cleaner		

**2310 ADJUSTABLE HAND SPRAYER**

- Easy trigger spray
- Graduated 22-ounce bottle
- For non-paint sprayable products

<b>DESCRIPTION</b> Adjustable Hand Sprayer	<b>WEIGHT</b> 2 lbs.	<b>CASE PACK</b> 6 Bottles
---	-------------------------	-------------------------------



**242 CAN HAND'LER**

Easily transform your aerosol cans into a spray gun by snapping the Aervoe Can Hand'ler into the can rim.

- Eliminates finger fatigue
- Prevent accidental discharge with trigger lock
- Easy to clean, and reusable

**Uses:** With any standard can of spray paint, varnish, primers, cleaners, lubricants, and insecticides.

<b>DESCRIPTION</b> Can Hand'ler	<b>WEIGHT</b> 2 lbs.	<b>CASE PACK</b> 12 Handles
------------------------------------	-------------------------	--------------------------------



**THINNERS**

Aervoe provides letdown solvents for use in all Aervoe bulk paints. These thinners are available in slow, medium, and fast evaporation formulations.

<b>DESCRIPTION</b> 494 Acetone/Xylene 75/25 (Fast)	<b>WEIGHT</b> 16 lbs.	<b>CASE PACK</b> 2 Gallons
908 VM&P/Xylene 50/50 (Medium)	16 lbs.	2 Gallons
909 Xylene/Acetone 75/25 (Slow)	17 lbs.	2 Gallons

Also available in 5-gallon pails and 50-gallon drums



# OTHER AERVOE PRODUCT MARKETS

**Look for other Aervoe catalogs featuring Safety, Traffic Control, Outdoor Products and Portable Appliances and Accessories.**

- Dynamo and solar charged electrical flashlights, radios, lanterns, etc., under the Wind 'N Go® and SolaDyne® trade names
- Portable gas, 12-volt electrical, and gourmet appliances under the Max Burton® trade name
- Emergency/safety related products for business and industry under the Aervoe name



**MAX  
Burton®**

**Wind 'N Go®**

**SOLADYNE®**

All products may be purchased on one purchase order, and shipped and billed together on one Aervoe order.





# MERCHANDISING



Aerove Industries makes available an array of merchandising aids to assist in selling its full line of products — headers, color charts, shelf displays, counter and floor racks. Customer Service is your reference source and point of issue for literature, point of sale materials, our free rack program, and other promotional items.

## HEADERS

Colorful headers are available to use on free-standing displays, Lozier shelving, and gondolas. Compact and versatile, these eye-catching signs become instant traffic boosters.

PROD #	DESCRIPTION	SIZE	CASE PACK
1791AR	Aerove Metal Display Header Card	13.5" x 23.875"	1 Header
1792AR	Counter Footer Card	17.125" x 2.75"	1 Footer
1793AR	Zynolyte Metal Display Header Card	13.5" x 23.875"	1 Header
1794AR	Plastic Display Header Card	9" x 22.437"	1 Header

## COLOR CARDS

Aerove Industries color cards are printed using the latest in computer color matching technology that provides the most accurate color match available with current printing processes.

## 8703 PLASTIC DISPLAY RACK

A 4-shelf plastic display rack holds 48 aerosol cans per shelf. Accommodates 16 or 20 oz. cans, quarts or gallon-sized products. Includes header assembly, header graphic sold separately. Dimensions 21.125" x 25.845" x 70".

PROD #	DESCRIPTION	WEIGHT	CASE PACK
8703	Plastic Display Rack	24 lbs.	1 Rack

## 8701 METAL DISPLAY RACK

Aerove's standing display rack has four shelves with the capacity to hold 48 aerosol cans per shelf. This versatile display will accommodate 16-oz. and 20-oz. can sizes. Aerove or Zynolyte headers are available. Fill each shelf with the same product or show eight different products at one time. Dimensions: 26" x 17.25" x 69".

PROD #	DESCRIPTION	WEIGHT	CASE PACK
8701	Metal Display Rack	45 lbs.	1 Rack

## 8512 LOCKING DOORS FOR 8701 RACK

Keep theft and accidental can discharges to a minimum with these easy to install doors.

PROD #	DESCRIPTION	WEIGHT	CASE PACK
8512	Locking Doors	10 lbs.	1 Pair

## 8702 COUNTER RACK

Convenient 3-shelf rack holds 18 cans of aerosol products. Dimensions: 17.25" x 9.75" x 14".

PROD #	DESCRIPTION	WEIGHT	CASE PACK
8702	Counter Rack	6 lbs.	1 Rack

# TRADE REFERENCES

## TRADE & TECHNICAL REFERENCES

This reference section is provided to assist in choosing the correct color for your job site application; and, to define industry standards that will assist in product selection and regulatory understanding.

**A.S.A.** — American Standards Association. Of particular interest in setting the color standard reference for electrical industry equipment.

**ANSI** — American National Standards Institute - A published guide for product color matching standards for O.S.H.A., APWA, traffic, and striping paint products.

**Aromatic Solvents** — Solvents with strong evaporation odor and whose main chemical structure is the benzene ring. Toluene, xylene, ethyl benzene, and others are of this type. While they do not have the extreme adverse health affects of benzene, there are more and more studies showing them to pose significant health risks. They are also in a group of the most reactive air pollutant organic compounds.

**Atomize** — To divide a liquid into extremely minute particles, either by impact with a jet stream of compressed gas, or by passage through a mechanical device (spraytip).

**Biodegradable** — Capable of being decomposed by bacteria or other living organisms.

**California Proposition 65** — A California State Act: "Safe Drinking Water and Toxic Enforcement Act" effective in 1987 that requires special labeling of products deemed by that state to cause cancer or reproductive toxicity. Not consistent with any Federal Hazardous Substance labeling requirements, sets no action levels for any ingredients, but refers to trace elements.

**CARB** — California Air Resources Board

**Category H-1** — Acceptable as a lubricant with incidental food contact for use in official establishments operating under the Federal Meat and Poultry Products Inspection Program. Such products may be used on food processing equipment as a protective anti-rust film, as a release agent on gaskets or seals of tank closures, and as a lubricant for machine parts and equipment in locations in which there is potential exposure of the lubricated part to food.



**C.A.S. Number** — Chemical Abstract Service number is used to identify a chemical ingredient.

The service is an organization which indexes information published in Chemical Abstracts by the American Chemical Society, and provides index guides by which information about a particular substance may be located.

**CFCs** — Chlorofluorocarbons are a family of inert, non-toxic, and easily liquefied chemicals used in refrigeration, air-conditioning, or prior to 1976, as a solvent and aerosol propellant. Because CFCs are inert and not destroyed in the lower atmosphere, they drift into the upper atmosphere where their chlorine components destroy ozone. Aervoe products contain no CFCs.

**Chlorinated Solvents** — Volatile liquids containing one or more chlorine atoms in their structure. Widely used in cleaning applications where non-flammability and rapid evaporation rate is required. Exempt for many years from VOC regulations, and widely used because they are non-flammable.

**Corrosive** — A chemical agent that reacts with the surface of a material, causing it to deteriorate or wear away.

**CPSC** — Consumer Product Safety Commission

**Dielectric Properties** — The measurement of a material's ability to insulate (or not conduct) electricity; in other words, a measure of the ability of the material to maintain a difference in electrical charge over a specific distance.

**Evaporation** — The process of a solvent or liquefied gas dissipating in a vapor or invisible minute particles.

**FDA** — Food and Drug Administration

**Federal 595 Color Standards** — A wide range of color chips for a matching reference system in world-wide uniform color matching.

**Flame Propagation (F.P.) Flammability Test** — Test method used to determine flammability rating as expressed on the front panel of an aerosol can label. The test involves spraying product through a candle flame and measuring the distance of the flame extension and observing for flash-back to the sprayhead.

**Flammability** — How easily something will burn or ignite, causing fire or combustion. OSHA defines flammable liquids as having a flashpoint below 100°F. Extremely Flammable is defined by a flash point below 20°F.

**Flash Point** — The minimum temperature at which a liquid gives off sufficient vapors to form, with air, an ignitable mixture.

**FTC** — Federal Trade Commission

**Greenhouse Effect** — The warming of the earth's atmosphere caused by a build-up of carbon dioxide or other trace gases. This allows the sun's rays to heat the earth, but prevent a counter-balancing loss of heat.

**IATA** — International Air Transport Association provides procedures for the shipper and the operator by which articles and substances with hazardous properties can be safely transported by air on a commercial air transport.

**IMDG Code** — International Maritime Dangerous Goods Code is a detailed international regulation for shipments of marine pollutants as ocean cargo. Their classification and storage location requirements are designed to prevent harm to the marine environment.

**KB Value** — A measure of the solvent power for a hydrocarbon solvent, and is governed by an ASTM standardized test, ASTM D1133.

**Lead Content** — Many orange, yellow, and red paint products today still use inorganic pigments which contain heavy metals such as lead, chromium and cadmium. Organic replacement pigments can be used to provide the identical colors, but require more pigment, resulting in higher cost. Aervoe products contain no lead.

**Liquefied Propellants vs. Compressed Gases** — Most common liquefied propellants are dimethyl ether, butane, isobutane, and propane (hydrocarbons), or blends of the four. They have very low boiling points, and exit as a gas at ambient temperatures and atmospheric pressure. Under pressure as in an aerosol container, they are liquids, and are intimately mixed with the other ingredients of the formulation. As the product is dispensed from the container,

the pressure drops and the liquefied propellant boils, causing atomization of the product. In contrast, compressed gases such as carbon dioxide, nitrogen, air, and nitrous oxide do not liquefy at the pressure inside the container. They mix only very slightly with the other components of the formula. Compressed gases deliver product by acting as a piston to push product to the aerosol sprayhead.

**MIR** — Maximum Incremental Reactivity. Developed for use by the California Air Resources Board (CARB) for various regulatory applications. Currently used in conjunction with VOC (Volatile Organic Compounds).

**M.S.D.S.** — Material Safety Data Sheets required by O.S.H.A. for worker right-to-know regulations describing the product's hazardous ingredients, and safety precautions associated with its use.

**NFPA-30B** — National Fire Prevention Association 1991 standard. NFPA 30B is a standard for the manufacture and storage of aerosol products. The standard establishes classification for levels of aerosols. The levels are I, II, and III, each classified by the percentage of flammable material in them, Level I having the least amount and Level III having the greatest amount.

**Net Weight vs. Fluid Ounces** — Net weight expressed in ounces or grams is the weight of the contents of the package. Fluid ounces is the volume of liquid content of the package. By example, a gallon of water weighs more than a gallon of gasoline, but fills the same volume of space. For aerosol cans, the required measurement of the ingredients is by net weight.

**Non-Ferrous Metal** — Metals that contain no iron.

**NSF Authorized** — National Sanitation Foundation. When noted, Aervoe coatings, lubricants, cleaners and corrosion protection products have been formulated to be accepted for use under the Federal Meat and Poultry Inspection Program by the NSF. The final granting of authorization for the proposed use of any such compound is the responsibility of the inspector in charge of the official facility.

**ORM-D** — A material such as a Consumer Commodity which, although otherwise subject to the regulations of 49 CFR 172.101, presents a limited hazard during transportation due to its form, quantity, and packaging. For a product to meet the ORM-D classification it must meet the Consumer Commodity and limited quantity definitions. Aerosol containers under twenty-eight fluid ounces are classified as ORM-D.

**OTC States** — Ozone Transport Commission. A multi-state organization created under the Clean Air Act (CAA). Responsible for advising EPA on transport issues and for developing and implementing regional solutions to the ground-level ozone problem in the Northeast and Mid-Atlantic regions.

**Ozone Depleting Substance (ODS)** — Identified Class I and II chemicals per the Clean Air Act Amendments of 1990 which must contain warning notices on the product label as of May, 1993. These are volatile chemicals containing chlorine atoms in their structure and must be stated "to be harmful to public health and the environment."

**pH** — A measure of the acidity or alkalinity of a solution.

**PSI** — Pounds per square inch.



**Steel Can Recycling Logo** — Can recycling symbol to encourage the recycling of all containers made from steel, including aerosols. Aervoe Industries Incorporated has actively supported steel can recycling for more than 20 years.

**REACH** — Registration, Evaluation, Authorization and Restriction of Chemicals. Adopted by the European union on December 18, 2006 to improve the protection of human health and the environment while maintaining the competitiveness and enhancing the innovative capability of the EU chemicals industry. The Consumer Products Safety and Quality (CPS&Q), formerly known as the European Chemicals Bureau (ECB) was responsible for developing methodologies, tools and technical guidance needed for implementation.

**SCAQMD** — South Coast Air Quality Management District.

**TAC** — Toxic Air Contaminants

**Tag Closed Cup (TCC) Flammability Standard** — Also known as Tag Closed Test (TCT), is one of several types of apparatus for determining flash points. This test is intended for use with liquids having a viscosity less than 45 SUS (Saybolt Universal Seconds) at 100°F (38°C), and a flash point below 200°F (93°C).

**Viscosity** — A measure of the resistance of a fluid, which is being deformed by either shear stress or tensile stress.

**VOC** — Volatile Organic Compounds

**Water-based vs. Water-added** — True water-based aerosols are propelled with dimethyl ether, and contain water, which is working as a vital component of the solvent system. Water-added products are solvent-based products to which a surfactant and water has been added. The presence of added water has only a slight effect

# NUMERICAL AND UPC PRODUCT INDEX

PART#	PG.	UPC	PART#	PG.	UPC	PART#	PG.	UPC
117 Gloss	8	0 88193 00117 2	283 Fl.Red-Orange	21	0 88193 00283 4	494F	55	0 88193 30494 2
120 Matte Clear Acrylic	8	0 88193 00120 2	286 Measuring Wheels	20	0 88193 00286 5	494D	55	0 88193 60494 3
143 Chrome Galvanize	18	0 88193 00143 1	288 HD Orange	20	0 88193 00288 9	510 Universal Clear	8	0 88193 00510 1
145 Steel Renew	8	0 88193 00145 5	288G HD Orange	20	0 88193 10288 6	511 Universal White	8	0 88193 00511 8
147 Cold Galvanize	18	0 88193 00147 9	290 Blue	22	0 88193 00290 2	512 Flat Black	8	0 88193 00512 5
148 Brite Galvanize	18	0 88193 00148 6	291 White	22	0 88193 00291 9	513 Satin Black	8	0 88193 00513 2
156 Rebar Green	14	0 88193 00156 1	292 Red	22	0 88193 00292 6	514 Gloss Black	8	0 88193 00514 9
157 J.D. Green (new)	10	0 88193 00157 8	293 Yellow	22	0 88193 00293 3	520 Chevrolet Orange	8	0 88193 00520 0
167 Cat Yellow (old)	10	0 88193 00167 7	295 Utility Yellow	21	0 88193 00295 7	530 Cadillac Gold	8	0 88193 00530 9
168 Cat Yellow (new)	10	0 88193 00168 4	296 APWA Yellow	21	0 88193 00296 4	540 Alpine Green	8	0 88193 00540 8
178 School Bus Yellow	10	0 88193 00178 3	300 Safety Purple	10	0 88193 00300 8	550 Ford Red	8	0 88193 00550 7
195 Fl.Red-Orange	14	0 88193 00195 0	300Q	10	0 88193 00300 2	551 Ford Gray	8	0 88193 00551 4
196 Fl.Red	14	0 88193 00196 7	300G	11	0 88193 10300 5	560 Ford Blue	8	0 88193 00560 6
197 Fl.Orange	14	0 88193 00197 4	301 Safety Red	10	0 88193 00301 5	561 Chevrolet Blue	8	0 88193 00561 3
198 Fl.Green	14	0 88193 00198 1	301Q	10	0 88193 20301 9	562 G.M.Blue	8	0 88193 00562 0
200 Clear	23	0 88193 00200 1	301G	11	0 88193 10301 2	566 Ford-Merc. Blue	8	0 88193 00566 8
201 Red	20	0 88193 00201 8	302 Safety Yellow	10	0 88193 00302 2	568 Chrysler Blue	8	0 88193 00568 2
201G	20	0 88193 10201 5	302Q	10	0 88193 20302 6	570 Universal Silver	8	0 88193 00570 5
202 Yellow	20	0 88193 00202 5	302G	11	0 88193 10302 9	575 Dull Aluminum	8	0 88193 00575 0
202G	20	0 88193 10202 2	303 Safety Blue	10	0 88193 00303 9	580 Cummins Beige	8	0 88193 00580 4
203 Blue	20	0 88193 00203 2	303Q	10	0 88193 20303 0	582 Cast Iron Gray	8	0 88193 00582 8
203G	20	0 88193 10203 9	303G	11	0 88193 10303 6	583 Steel Blast Gray	8	0 88193 00583 5
204 Green	20	0 88193 00204 9	304 Safety Green	10	0 88193 00304 6	590 Carb & Choke Cleaner	44	0 88193 00590 3
204G	20	0 88193 10204 6	304Q	10	0 88193 20304 0	591 Low VOC Brake & Parts Cleaner	44	0 88193 00591 0
205 Orange	20	0 88193 00205 6	304G	11	0 88193 10304 3	591G	44	0 88193 10591 7
205G	20	0 88193 10205 3	305 Safety Orange	10	0 88193 00305 3	592 Brake & Parts Cleaner	44	0 88193 00592 7
206 Black	20	0 88193 00206 3	305Q	10	0 88193 20305 7	592G	44	0 88193 10592 4
206G	20	0 88193 10206 0	305G	11	0 88193 10305 0	595 Und.&Snd. Insulator	37	0 88193 00595 8
207 White	20	0 88193 00207 0	306 Safety Black	10	0 88193 00306 0	610 Red	15	0 88193 00610 8
207G	20	0 88193 10207 7	306Q	10	0 88193 20306 4	610G	15	0 88193 10610 5
208 HiVis Yellow	20	0 88193 00208 7	306G	11	0 88193 10306 7	610Q	15	0 88193 20610 2
208G	20	0 88193 10208 4	307 Safety White	10	0 88193 00307 7	620 Orange	15	0 88193 00620 7
209 Lt.Blue	20	0 88193 00209 4	307Q	10	0 88193 20307 1	620G	15	0 88193 10620 4
209G	20	0 88193 10209 1	307G	11	0 88193 10307 4	620Q	15	0 88193 20620 1
210 Silver	20	0 88193 00210 0	308 Brite Red	10	0 88193 00308 4	630 Yellow	15	0 88193 00630 6
210G	20	0 88193 10210 7	308Q	10	0 88193 20308 8	630G	15	0 88193 10630 3
212 Purple	20	0 88193 00212 4	308G	11	0 88193 10308 1	630Q	15	0 88193 20630 0
212G	20	0 88193 10212 1	309 Aluminum	10	0 88193 00309 1	640 Green	15	0 88193 00640 5
214 Blue	23	0 88193 00214 8	309Q	10	0 88193 20309 5	640G	15	0 88193 10640 2
215 White	23	0 88193 00215 5	309G	11	0 88193 10309 8	640Q	15	0 88193 20640 9
216 Red	23	0 88193 00216 2	310 Silver	10	0 88193 00310 7	645 Dark Green	15	0 88193 00645 0
217 Orange	23	0 88193 00217 9	311 Gold	10	0 88193 00311 4	645G	15	0 88193 10645 7
218 Yellow	23	0 88193 00218 6	311Q	10	0 88193 20311 8	645Q	15	0 88193 20645 4
219 Green	23	0 88193 00219 3	312 F.Black	10	0 88193 00312 1	650 Blue	15	0 88193 00650 4
220 Fl.Red	20	0 88193 00220 9	312Q	10	0 88193 20312 5	650G	15	0 88193 10650 1
220G	20	0 88193 10220 6	312G	11	0 88193 10312 8	650Q	15	0 88193 20650 8
222 Fl.Orange	20	0 88193 00222 3	313 F.White	10	0 88193 00313 8	660 Black	15	0 88193 00660 3
222G	20	0 88193 10222 0	313Q	10	0 88193 20313 5	660G	15	0 88193 10660 0
224 Fl.Green	20	0 88193 00224 7	314 Brown	10	0 88193 00314 5	660Q	15	0 88193 20660 7
224G	20	0 88193 10224 4	314Q	10	0 88193 20314 9	670 White	15	0 88193 00670 2
226 Fl.Yellow	20	0 88193 00226 1	317 Tan	10	0 88193 00317 6	670G	15	0 88193 10670 9
226G	20	0 88193 10226 8	317Q	10	0 88193 20317 0	670Q	15	0 88193 20670 6
227 Fl.Blue	20	0 88193 00227 8	317G	11	0 88193 10317 3	680 Silver	15	0 88193 00680 1
227G	20	0 88193 10227 5	318 Light Blue	10	0 88193 00318 3	680G	15	0 88193 10680 8
229 Fl.Pink	20	0 88193 00229 2	318Q	10	0 88193 20318 7	680Q	15	0 88193 20680 5
229G	20	0 88193 10229 9	318G	11	0 88193 10318 0	681 Purple	15	0 88193 00681 8
230 Fl.Red-Orange	20	0 88193 00230 8	319 Royal Blue	10	0 88193 00319 0	681G	15	0 88193 10681 5
230G	20	0 88193 10230 5	319Q	10	0 88193 20319 4	681Q	15	0 88193 20681 2
242 Can-Hand'ler	55	0 88193 00242 1	319G	11	0 88193 10319 7	688 Fl.Green	15	0 88193 00688 7
244 Spot Marker	20	0 88193 00244 5	320 Forest Green	10	0 88193 00320 6	688G	15	0 88193 10688 4
245 Marking Stick	20	0 88193 00245 2	320Q	10	0 88193 20320 0	688Q	15	0 88193 20688 1
246 Fl.Red	21	0 88193 00246 9	320G	11	0 88193 10320 3	690 Fl.Red	15	0 88193 00690 0
247 Fl.Orange	21	0 88193 00247 6	322G Equip.Orange	11	0 88193 10322 7	690G	15	0 88193 10690 7
248 Fl.Green	21	0 88193 00248 3	333 Dark Gray	10	0 88193 00333 6	690Q	15	0 88193 20690 4
249 Fl.Pink	21	0 88193 00249 0	333Q	10	0 88193 20333 0	691 Fl.Pink	15	0 88193 00691 7
250 Fl.Blue	21	0 88193 00250 6	342 Semi Flat Black	10	0 88193 00342 8	691G	15	0 88193 10691 4
251 Black	21	0 88193 00251 3	342Q	10	0 88193 20342 2	691Q	15	0 88193 20691 1
252 Yellow	21	0 88193 00252 0	344 Satin Black	10	0 88193 00344 2	692 Fl.Orange	15	0 88193 00692 4
254 Blue	21	0 88193 00254 4	344Q	10	0 88193 20344 6	692G	15	0 88193 10692 1
255 White	21	0 88193 00255 1	344G	11	0 88193 10344 9	692Q	15	0 88193 20692 8
256 Red	21	0 88193 00256 8	348 Meter Green	10	0 88193 00348 0	693 Fl.Yellow	15	0 88193 00693 1
257 Orange	21	0 88193 00257 5	348Q	10	0 88193 20348 4	693G	15	0 88193 10693 8
258 HiVis Yellow	21	0 88193 00258 2	348G	11	0 88193 10348 7	693Q	15	0 88193 20693 5
259 Green	21	0 88193 00259 9	349 Meter Gray	10	0 88193 00349 7	694 White	15	0 88193 00694 8
260 Purple	21	0 88193 00260 5	349Q	10	0 88193 20349 1	695 Blue	15	0 88193 00695 5
261 I-A-C Red	23	0 88193 00261 2	349G	11	0 88193 10349 4	697 Red	15	0 88193 00697 9
262 I-A-C Yellow	23	0 88193 00262 9	361 Light Gray	10	0 88193 00361 9	698 Orange	15	0 88193 00698 6
263 I-A-C Blue	23	0 88193 00263 6	361Q	10	0 88193 20361 1	699 Yellow	15	0 88193 00699 3
265 I-A-C Orange	23	0 88193 00265 0	361G	11	0 88193 10361 6	701 Supreme White	26	0 88193 00701 3
267 I-A-C White	23	0 88193 00267 4	399 Lfp Cleaner Degreaser H.D.	40	0 88193 00399 2	702 Supreme Yellow	26	0 88193 00702 0
270 I-A-C Fl.Red	23	0 88193 00270 4	399G	40	0 88193 10399 9	710 Traffic White	26	0 88193 00710 5
272 I-A-C Fl.Orange	23	0 88193 00272 8	400 Nfp Safety Solvent	40	0 88193 00400 5	710G	26	0 88193 10710 2
274 I-A-C Fl.Green	23	0 88193 00274 2	401 Red	37	0 88193 00401 2	720 Traffic Yellow	26	0 88193 00720 4
275 I-A-C Fl.Red-Orange	23	0 88193 00275 9	402 Black	37	0 88193 00402 9	720G	26	0 88193 10720 1
279 I-A-C Fl.Pink	23	0 88193 00279 7	403 Clear	37	0 88193 00403 6	730 Traffic Red	26	0 88193 00730 3
281 HD Red	20	0 88193 00281 0	415 Off Line Contact Cleaner H.D.(F)	41	0 88193 00415 9	730G	26	0 88193 10730 0
281G	20	0 88193 10281 7	415G	41	0 88193 10415 6	740 Traffic Orange	26	0 88193 00740 2
282 HD Yellow	20	0 88193 00282 7	420 Dust Air	44	0 88193 00420 3	740G	26	0 88193 10740 9
282G	20	0 88193 10282 4	494G Acetone/Xylene	55	0 88193 10494 1	745 Striping Stick	27	0 88193 00745 7

PART#	PG.	UPC	PART#	PG.	UPC	PART#	PG.	UPC
750 Traffic Blue	26	0 88193 00750 1	1013G	43	0 88193 11013 3	1633 Hartford Green	9	0 88193 01633 6
750G	26	0 88193 10750 8	1070 Fault Finder 1 Kit	43	0 88193 01070 9	1634 Coppertone	9	0 88193 01634 3
760 Traffic Green	26	0 88193 00760 0	1071 Fault Finder Cleaner 1	43	0 88193 01071 6	1635 Bone White	9	0 88193 01635 0
760G	26	0 88193 10760 7	1072 Fault Finder Penetrant 1	43	0 88193 01072 3	1636 Sierra Tan	9	0 88193 01636 7
770 Asphalt Black	26	0 88193 00770 9	1073 Fault Finder Developer 1	43	0 88193 01073 0	1637 Slate Gray	9	0 88193 01637 4
770G	26	0 88193 10770 6	1074 Green	12	0 88193 01074 7	1638 Sandstone	9	0 88193 01638 1
790 Athletic White	26	0 88193 00790 7	1075 Khaki	12	0 88193 01075 4	1639 Colonial Red	9	0 88193 01639 8
790G	26	0 88193 10790 4	1076 Coyote	12	0 88193 01076 1	1640 Regal Red	9	0 88193 01640 4
791 Athletic Yellow	26	0 88193 00791 4	1077 Black	12	0 88193 01077 8	1641 Regal Blue	9	0 88193 01641 1
791G	26	0 88193 10791 1	1078 Urban Tan	12	0 88193 01078 5	1642 Sherwood Green	9	0 88193 01642 8
792 Athletic Blue	26	0 88193 00792 1	1079 Light Tan	12	0 88193 01079 2	1643 Hartford Green	9	0 88193 01643 5
792G	26	0 88193 10792 8	1080 Highland	12	0 88193 01080 8	1644 Coppertone	9	0 88193 01644 2
793 Athletic Red	26	0 88193 00793 8	1081 Light Coyote	12	0 88193 01081 5	1645 Roof Tar & Adhesive Remover	9	0 88193 01645 9
793G	26	0 88193 10793 5	1082 Desert Sand	12	0 88193 01082 2	1690 Asphalt Roof Primer	9	0 88193 01690 9
796 Athletic Fl. Orange	26	0 88193 00796 9	1083 Urban Gray	12	0 88193 01083 9	1791AR Rack Aerovue Header Card	57	0 88193 01791 3
796G	26	0 88193 10796 6	1084 Foliage Green	12	0 88193 01084 6	1792AR Rack Footee Card	57	0 88193 01792 0
797 Stencil Kit	27	0 88193 00797 6	1085 Fall Gold	12	0 88193 01085 3	1793AR Zynolytic Header Card	57	0 88193 01793 3
800 Vers-A-Striper (pavement)	27	0 88193 00800 3	1086 Cattle Brown	12	0 88193 01086 0	1794AR Plastic Display Rack	57	0 88193 01794 4
801 Vers-A-Striper (turf)	27	0 88193 01801 0	1087 Moss Green	12	0 88193 01087 7	1850 Calif. Black Bronze	9	0 88193 01850 7
860 Glass & Surface Cleaner	44	0 88193 00860 7	1088 Sand	12	0 88193 01088 4	1852 Dark Bronze	9	0 88193 01852 1
860G	44	0 88193 10860 4	1089 Clay	12	0 88193 01089 1	1857 Bronze (0810)	9	0 88193 01857 6
862 Hornet & Wasp Spray	51	0 88193 00862 1	1090 Acorn	12	0 88193 01090 7	1860 White	9	0 88193 01860 6
875 Label Adhesive	50	0 88193 00875 1	1091 Leaf Green	12	0 88193 01091 4	1951 Speed Dip® Cleaner	40	7 69372 01951 4
876 Carton Adhesive	50	0 88193 00876 8	1092 Brush Brown	12	0 88193 01092 1	1951G	40	7 69372 11951 1
885 Insect Repellent Towel Pack	51	0 88193 00885 0	1093 Brush Green	12	0 88193 01093 8	1985 Coin Cleaner	40	7 69372 01985 9
887 Anti-Spatter	34	0 88193 00887 4	1094 Bark Gray	12	0 88193 01094 5	1985G	40	7 69372 11985 6
889 Sun Screen	51	0 88193 00889 8	1095 Black	12	0 88193 01095 2	2010 General Purpose Silicone	47	0 88193 02010 4
890 Cutting Oil	34	0 88193 00890 4	1096 Sage	12	0 88193 01096 9	2011 Food Grade Silicone	47	0 88193 02011 1
890G	34	0 88193 10890 1	1097 Sage Gray	12	0 88193 01097 6	2012 Heavy Duty Silicone	47	0 88193 02012 8
900 ACU Digital Kit	13	0 88193 00900 0	1098 Buck Brush	12	0 88193 01098 3	2013 Paintable Silicone	48	0 88193 02013 5
900A	13	0 88193 01900 9	1099 Tan	12	0 88193 01099 0	2014 T.F.E. Dry Film	48	0 88193 02014 2
901 MARPAT Woodland Digital Kit	13	0 88193 00901 7	1101 Fl. Orange Flagging Tape	25	0 88193 01101 0	2015 Zinc Stearate Dry Powder	48	0 88193 02015 9
901A	13	0 88193 01901 7	1105 Fl. Pink Flagging Tape	25	0 88193 01105 8	2016 Paintable Lecithin	49	0 88193 02016 6
902 MARPAT Desert Digital Kit	13	0 88193 00902 4	1110 Fl. Red Flagging Tape	25	0 88193 01110 2	2310 Adjustable Hand Sprayer	55	0 88193 02310 5
902A	13	0 88193 01902 3	1115 Red Flagging Tape	25	0 88193 01115 7	2801 Red	50	0 88193 02801 8
903 Digital Stencil Kit	13	0 88193 00903 1	1120 Blue Flagging Tape	25	0 88193 01120 1	2802 Yellow	50	0 88193 02802 5
904 Marshland Kit	13	0 88193 00904 8	1125 White Flagging Tape	25	0 88193 01125 6	2803 Blue	50	0 88193 02803 2
904A	13	0 88193 01904 7	1130 Fl. Lime Flagging Tape	25	0 88193 01130 0	2805 Orange	50	0 88193 02805 6
904B	13	0 88193 02904 6	1135 Yellow Flagging Tape	25	0 88193 01135 5	2806 Black	50	0 88193 02806 3
905 Timberland Kit	13	0 88193 00905 5	1140 Green Flagging Tape	25	0 88193 01140 9	2807 White	50	0 88193 02807 0
905A	13	0 88193 01905 4	1175 Fl. Orange Marking Flag	25	0 88193 01175 1	2811 Tan	50	0 88193 02811 7
905B	13	0 88193 02905 3	1176 Fl. Pink Marking Flag	25	0 88193 01176 8	3010 Safety Red	10	0 88193 03010 3
906 Upland Kit	13	0 88193 00906 2	1177 Fl. Green Marking Flag	25	0 88193 01177 5	3010G	11	0 88193 03010 0
906A	13	0 88193 01906 1	1178 White Marking Flag	25	0 88193 01178 2	3020 Safety Yellow	10	0 88193 03020 2
906B	13	0 88193 02906 0	1179 Blue Marking Flag	25	0 88193 01179 9	3020G	11	0 88193 03020 9
907 Forestland Kit	13	0 88193 00907 9	1180 Red Marking Flag	25	0 88193 01180 5	3030 Safety Blue	10	0 88193 03030 1
907A	13	0 88193 01907 8	1181 Yellow Marking Flag	25	0 88193 01181 2	3030G	11	0 88193 03030 8
907B	13	0 88193 02907 7	1221 Red Soft Tip	25	0 88193 01221 5	3040 Safety Green	10	0 88193 03040 0
908G VM&P/Xylene	55	0 88193 10908 3	1222 Yellow Soft Tip	25	0 88193 01222 2	3040G	11	0 88193 03040 7
908F VM&P/Xylene	55	0 88193 30908 4	1226 Black Soft Tip	25	0 88193 01226 0	3050 Safety Orange	10	0 88193 03050 9
908D VM&P/Xylene	55	0 88193 60908 5	1227 White Soft Tip	25	0 88193 01227 7	3050G	11	0 88193 03050 6
909G Xylene/Acetone	55	0 88193 10909 0	1380 Black	22	0 88193 01380 9	3060 Safety Black	10	0 88193 03060 8
909F Xylene/Acetone	55	0 88193 30909 1	1381 Red	22	0 88193 01381 6	3060G	11	0 88193 03060 5
909D Xylene/Acetone	55	0 88193 60909 2	1382 Yellow	22	0 88193 01382 3	3070 Safety White	10	0 88193 03070 7
910 Hunting Lands Stencil Kit	13	0 88193 01910 9	1383 Blue	22	0 88193 01383 0	3070G	11	0 88193 03070 4
911 Camoland Stencil Kit	13	0 88193 01911 6	1384 Green	22	0 88193 01384 7	3090 Tool & Die Saver	46	0 88193 03090 5
912 Upland Stencil Kit	13	0 88193 01912 3	1385 Orange	22	0 88193 01385 4	3091 Mold & Die Protector	46	0 88193 03091 2
932 Food Grade Lube Oil	30	0 88193 00932 1	1387 White	22	0 88193 01387 8	3095 Mold Cleaner	46	0 88193 03095 0
932G	30	0 88193 10932 8	1390 Fl. Red	22	0 88193 01390 8	3120 F. Black	10	0 88193 03120 9
933 Food Grade Lube Grease	30	0 88193 00933 8	1391 Fl. Green	22	0 88193 01391 5	3120G	11	0 88193 03120 6
933G	30	0 88193 10933 5	1392 Fl. Orange	22	0 88193 01392 2	3130 F. White	10	0 88193 03130 8
937 Tef-Lube	28	0 88193 00937 6	1393 Fl. Yellow	22	0 88193 01393 9	3130G	11	0 88193 03130 5
938 Tef-Lube	28	0 88193 00938 3	1394 Fl. Blue	22	0 88193 01394 6	3150 Agri. Red	10	0 88193 03150 6
950 P.B. Rust-Solv™	32	0 88193 00950 5	1395 Fl. Red-Orange	22	0 88193 01395 3	3160 Agri. Green	10	0 88193 03160 5
951 Light Green	12	0 88193 00951 2	1399 Fl. Pink	22	0 88193 01399 1	3170 Agri. Blue	10	0 88193 03170 4
952 Dark Green	12	0 88193 00952 9	1420 Fl. Red	23	0 88193 01420 2	3423 General Purpose Silicone	47	0 88193 03423 1
957 Earth Yellow	12	0 88193 00957 4	1422 Fl. Orange	23	0 88193 01422 6	3445 Heavy Duty Silicone	47	0 88193 03445 3
961 APC-961 Lube/Film	29	0 88193 00961 1	1426 Fl. Yellow	23	0 88193 01426 4	3452 Lecithin	49	0 88193 03452 1
961G	29	0 88193 10961 8	1429 Fl. Pink	23	0 88193 01429 5	3452G	49	0 88193 03452 8
962 APC-962 H.D. Multipurpose Lube	29	0 88193 00962 8	1601 Cedar	9	0 88193 01601 5	3460 Paintable	48	0 88193 03460 6
962G	29	0 88193 10962 5	1603 Rustic Brown	9	0 88193 01603 9	3470 Mold Release for Epoxy	49	0 88193 03470 5
963 APC-963 Corrosion Inhibitor	29	0 88193 00963 5	1604 Driftwood	9	0 88193 01604 6	3490 Meter Gray	10	0 88193 03490 3
963G	29	0 88193 10963 2	1606 Birchwood	9	0 88193 01606 0	3490G	11	0 88193 03490 0
967 Earth Red	12	0 88193 00967 3	1607 Smoke	9	0 88193 01607 7	4750 Green-Out	22	0 88193 04750 7
968 Field Drab	12	0 88193 00968 0	1608 Slate Gray	9	0 88193 01608 4	5001 Aluminum	4	0 88193 05001 9
975 White	12	0 88193 00975 8	1609 Rustic Black	9	0 88193 01609 1	5002 Silver	4	0 88193 05002 6
977 Sand	12	0 88193 00977 2	1610 Evergreen	9	0 88193 01610 7	5004 Safety Blue	4	0 88193 05004 0
979 Forest Green	12	0 88193 00979 6	1612 Dark Brown	9	0 88193 01612 1	5005 Light Blue	4	0 88193 05005 7
987A Olive Drab	12	0 88193 01987 0	1613 Terra Cotta	9	0 88193 01613 2	5006 Safety Green	4	0 88193 05006 4
987B Olive Drab	12	0 88193 00987 1	1614 Golden Terra Cotta	9	0 88193 01614 5	5007 Hunter Green	4	0 88193 05007 1
988 Black	12	0 88193 00988 8	1616 Adobe	9	0 88193 01616 9	5008 Safety Yellow	4	0 88193 05008 8
990 Woodland Green	12	0 88193 00990 1	1617 Casa Grande	9	0 88193 01617 6	5009 Equip Yellow	4	0 88193 05009 5
992 Marine Corps Green	12	0 88193 00992 5	1618 Calif. Mission	9	0 88193 01618 3	5010 Safety Orange	4	0 88193 05010 1
997A Olive Drab	12	0 88193 01997 9	1619 Desert Sage	9	0 88193 01619 0	5011 Equip Orange	4	0 88193 05011 8
997B Olive Drab	12	0 88193 00997 0	1625 Bone White	9	0 88193 01625 1	5012 Safety Red	4	0 88193 05012 5
999 Earth Brown	12	0 88193 00999 4	1626 Sierra Tan	9	0 88193 01626 8	5013 Brite Red	4	0 88193 05013 2
1010 Fault Finder 1A Kit	43	0 88193 01010 5	1627 Slate Gray	9	0 88193 01627 5	5014 Sand	4	0 88193 05014 9
1011 Fault Finder Cleaner 1A	43	0 88193 01011 2	1628 Sandstone	9	0 88193 01628 2	5016 F. Black	4	0 88193 05016 3
1011G	43	0 88193 11011 9	1629 Colonial Red	9	0 88193 01629 9	5017 Black	4	0 88193 05017 0
1012 Fault Finder Penetrant 1A	43	0 88193 01012 9	1630 Regal Red	9	0 88193 01630 5	5018 F. White	4	0 88193 05018 7
1012G	43	0 88193 11012 6	1631 Regal Blue	9	0 88193 01631 2	5019 White	4	0 88193 05019 4
1013 Fault Finder Developer 1 A	43	0 88193 01013 6	1632 Sherwood Green	9	0 88193 01632 9	5020 Light Gray	4	0 88193 05020 0

PART#	PG.	UPC
5021 Hand-y Clean Towels.....	45	0 88193 05021 7
5025 Hand-y Pro Towels.....	45	0 88193 05025 5
5040 Buttercutt Compound Pint.....	34	0 88193 05040 8
5041 Buttercutt Compound Gallon.....	34	0 88193 05041 5
5049 Meter Gray.....	4	0 88193 05049 1
5050 Padmount Green.....	4	0 88193 05050 7
5055 All Purpose Cleaner.....	44	0 88193 05055 2
5062 Anti-Vandal Spray.....	52	0 88193 05062 0
5063 Graffiti Remover Tool.....	52	0 88193 05063 7
5070 Cleaner/Degreaser.....	40	0 88193 05070 5
5070G.....	40	0 88193 15070 2
5205 Waterworks Coat. Remover.....	52	0 88193 05205 1
6001 Toolmaker's Ink Blue.....	35	0 88193 06001 8
6001G.....	35	0 88193 16001 5
6004 Kleer Kote.....	7	0 88193 06004 9
6005 Battery Terminal Coating.....	37	0 88193 06005 6
6007 Rust Inhibitor.....	37	0 88193 06007 0
6007G.....	37	0 88193 16007 8
6013 Corrosion Suppressant 101.....	38	0 88193 06013 1
6013G.....	38	0 88193 16013 8
6030 Penetrating Oil.....	32	0 88193 06030 8
6075 Dry Film Lubricant.....	32	0 88193 06075 9
6078 T.F.E. Lubricant.....	32	0 88193 06078 0
6080 Dry Moly Lubricant.....	31	0 88193 06080 3
6084 Red Insulating Varnish.....	38	0 88193 06084 1
6090 Prussian Blue High Spot Ind.....	35	0 88193 06090 2
6095 Toolmaker's Ink Remover.....	35	0 88193 06095 7
6095G.....	35	0 88193 16095 4
7007 Cold Galvanizing Coating.....	16	0 88193 07007 9
7007G.....	16	0 88193 17007 6
7007Q.....	16	0 88193 27007 3
7007HP.....	16	0 88193 37007 0
7007VG Low VOC.....	17	0 88193 47007 7
7008 Brite Galvanize Coating.....	16	0 88193 07008 6
7008G.....	16	0 88193 17008 3
7008Q.....	16	0 88193 27008 0
7008VG Low VOC.....	17	0 88193 47008 4
7020 Cutting Oil.....	35	0 88193 07020 8
7020G.....	35	0 88193 17020 5
7037 Lithium Grease.....	32	0 88193 07037 6
7041 Moly Grease.....	31	0 88193 07041 3
7043 Wire Rope, Chain, & Cable Lube.....	31	0 88193 07043 7
7045 H.D. Open Gear & Wire Rope.....	33	0 88193 07045 1
7080 Black.....	24	0 88193 07080 2
7083 White.....	24	0 88193 07083 3
7340 All-4.....	28	0 88193 07340 7
7340G.....	28	0 88193 17340 4
8034 General Purpose Silicone.....	33	0 88193 08034 4
8034G.....	33	0 88193 18034 1
8036 Food Grade Silicone Lube.....	30	0 88193 08036 8
8036G.....	30	0 88193 18036 5
8060 Nfp Safety Solvent.....	41	0 88193 08060 3
8060G.....	41	0 88193 18060 0
8078 Dry Graphite Lubricant.....	33	0 88193 08078 8
8079 Drive Belt Dressing.....	38	0 88193 08079 5
8079Q.....	38	0 88193 28079 9
8177 Multi-Purpose Adhesive.....	42	0 88193 08177 8
8178 EPS Adhesive.....	42	0 88193 08178 5
8190 Hi-Strength Adhesive.....	42	0 88193 08190 7
8192 Contact Adhesive.....	42	0 88193 08192 1
8209 Spra-Tool Kit.....	53	0 88193 08209 6
8211 Spra-Tool Power-pack.....	53	0 88193 08211 9
8212 Spra-Tool Jar.....	53	0 88193 08212 6
8213 Spra-Tool head & tips.....	53	0 88193 08213 3
8260 H.D. Citrus Cleaner/Degreaser.....	41	0 88193 08260 3
8260G.....	41	0 88193 18260 4
8276 Off Line Contact Cleaner.....	41	0 88193 08276 8
8377 Electronic Comp. Cleaner.....	41	0 88193 08377 2
8512 Locking Doors.....	57	0 88193 08512 7
8701 6-Shelf Rack.....	57	0 88193 08701 2
8702 3-Shelf Rack.....	57	0 88193 08702 2
8703 Plastic 4-Shelf Display.....	57	0 88193 08703 9
9105 Anti-Seize Compound.....	39	0 88193 09105 0
9106 Tap Tool.....	35	0 88193 09106 7
9120 Anti-Seize Copper.....	39	0 88193 09120 3
9122 Anti-Seize Copper.....	39	0 88193 09122 7
9123 Anti-Seize Copper.....	39	0 88193 09123 4
9152 Anti-Seize Food Grade.....	30	0 88193 09152 4
GPT 100 Tank.....	54	0 88193 00000 7
GPT 120 Sprayer & Hose.....	54	0 88193 00000 7
GPT 121 Sprayer.....	54	0 88193 00000 7
GPT 122 Hose.....	54	0 88193 00000 7
S180 Aluminum.....	6	0 36333 00180 3
S182 Chocolate Brown.....	6	0 36333 00182 7
S184 Fire Red.....	6	0 36333 00184 1
S185 Orange.....	6	0 36333 00185 8
S186 Flat Black.....	6	0 36333 00186 5
S188 Flat White.....	6	0 36333 00188 9
S190 Gloss Black.....	6	0 36333 00190 2
S191 Semi Gloss Black.....	6	0 36333 00191 9
S192 Gloss White.....	6	0 36333 00192 6
S193 Semi Gloss White.....	6	0 36333 00193 3

PART#	PG.	UPC
S196 Lemon Yellow.....	6	0 36333 00196 4
S198 Malibu Blue.....	6	0 36333 00198 8
S202 Sherwood Green.....	6	0 36333 00202 2
S205 Gray.....	6	0 36333 00205 3
S206 Clear.....	6	0 36333 00206 0
S220 Almond.....	6	0 36333 00220 6
Z160 Chrome.....	7	0 36333 00160 5
Z165 Copper.....	7	0 36333 00165 0
Z170 Gold.....	7	0 36333 00170 4
Z175 Brass.....	7	0 36333 00175 9
Z275 Semi-Gloss White.....	5	0 36333 00275 6
Z277 Semi-Gloss Black.....	5	0 36333 00277 0
Z297 Persimmon.....	5	0 36333 00297 8
Z298 Orange.....	5	0 36333 00298 5
Z307 Acrylic Clear.....	5	0 36333 00307 4
Z308 Silver.....	5	0 36333 00308 1
Z317 Aluminum.....	5	0 36333 00317 3
Z357 Chocolate Brown.....	5	0 36333 00357 9
Z377 Flat White.....	5	0 36333 00377 7
Z387 Gloss Black.....	5	0 36333 00387 6
Z397 Gloss White.....	5	0 36333 00397 5
Z407 Gold.....	5	0 36333 00407 1
Z467 Lemon Yellow.....	5	0 36333 00467 5
Z468 Medium Gray.....	5	0 36333 00468 2
Z469 Hunter Green.....	5	0 36333 00469 9
Z470 Bermuda Blue.....	5	0 36333 00470 5
Z471 Royal Blue.....	5	0 36333 00471 2
Z480 Beige.....	5	0 36333 00480 4
Z482 Almond.....	5	0 36333 00482 8
Z487 Flat Black.....	5	0 36333 00487 3
Z489 Light Gray.....	5	0 36333 00489 7
Z506 Antique White.....	5	0 36333 00506 1
Z516 Purple.....	5	0 36333 00516 0
Z517 Rich Red.....	5	0 36333 00517 7
Z518 Pink.....	5	0 36333 00518 4
Z519 Burgundy.....	5	0 36333 00519 1
Z525 Kelly Green.....	5	0 36333 00525 2
Z630 Aluminum.....	7	0 36333 00630 3
Z635 Black.....	7	0 36333 00635 8
Z642 Machinery Gray.....	7	0 36333 00642 6
Z645 White.....	7	0 36333 00645 7
Z813 Red.....	5	0 36333 00813 0
Z1175 White.....	7	0 36333 01175 8
Z1176 Almond.....	7	0 36333 01176 5
Z1415 Blue.....	7	0 36333 01415 5
Z1416 Green.....	7	0 36333 01416 2
Z1417 Lemon Yellow.....	7	0 36333 01417 9
Z1418 Red.....	7	0 36333 01418 6
Z1419 Red-Orange.....	7	0 36333 01419 3
Z1420 Yellow-Orange.....	7	0 36333 01420 9
Z1421 Hot Pink.....	7	0 36333 01421 6
Z1422 Orange.....	7	0 36333 01422 3
Z1704 Gray.....	6	0 36333 01704 0
Z1706 Red Oxide.....	6	0 36333 01706 4
Z8070 Dark Gray.....	6	0 36333 08070 9
Z8070G.....	6	0 36333 18070 6
Z8072 Gray.....	6	0 36333 08072 3
Z8072G.....	6	0 36333 18072 0
Z8074 Red Oxide.....	6	0 36333 08074 7
Z8074G.....	6	0 36333 18074 4
Z8076 White.....	6	0 36333 08076 1
Z8076G.....	6	0 36333 18076 8
Z8077 Green.....	6	0 36333 08077 8
Z8077G.....	6	0 36333 18077 5
Z8078 Black.....	6	0 36333 08078 5
Z8078G.....	6	0 36333 18078 2
Z8079 Yellow.....	6	0 36333 08079 2
Z8079G.....	6	0 36333 18079 9

# CUSTOMER SUPPORT SERVICES

## CONTACT INFORMATION

Toll Free Voice: 1-800-227-0196  
Toll Free Fax: 1-800-921-0065  
Direct Voice: 1-775-783-3100  
Direct Fax: 1-775-782-5687  
Email: mailbox@aervoe.com  
Web Site: http://www.aervoe.com

## PRODUCT DATA SHEETS

Industrial technical data sheets are available to help answer product questions. They list specific product information about usage, features, and compliance, and assist in explaining the Aervoe Advantage. Copies available online at [www.aervoe.com](http://www.aervoe.com), or by calling Customer Service toll free at 1-800-227-0196.

## MATERIAL SAFETY DATA SHEETS

MSDS are included in **every case** of Aervoe Industries product that's shipped out. Copies are also available online at [www.aervoe.com](http://www.aervoe.com) in both U.S. and Canadian format.

## WORKPLACE HAZARDOUS MATERIAL INFORMATION SYSTEM (WHMIS)

WHMIS labels are applied to product prior to shipment into Canada. To obtain additional copies contact Customer Service at 1-800-227-0196.

## ELECTRONIC DATA INTERCHANGE (EDI)

Aervoe is set up for direct electronic exchange of orders, shipping information, and invoicing. To find out more about our EDI capabilities, contact Customer Service at the toll free voice number listed above.

## WAREHOUSE

Orders are shipped from our distribution centers in Gardnerville, Nevada, or Nashville, Illinois, depending on the final destination of the order.

## FIELD SALES ASSISTANCE

Aervoe employs factory-direct Field Sales Associates to assist in the selling effort.

## QUALITY CONTROL

We are committed to continuous improvement of our Quality Management System which reflects our start in this industry 50 years ago as the major G.S.A. aerosol contractor for military specification lacquers and enamels.

## E-COMMERCE

Aervoe is online with a fully operational storefront. Visit our web site 24 hours a day, 7 days a week to download important product information, see new product introductions and promotions, or place your orders at [www.aervoe.com](http://www.aervoe.com).

## INTERNATIONAL CONSIDERATIONS

It is a corporate goal to increase our presence in Mexico and Latin America, as well as Eastern Canada, and to that end Aervoe is working hard to provide MSDS in Canadian English and French. We are also adding Spanish labeling to selected products. This effort will continue to expand as our international influence expands.

## TECHNICAL ASSISTANCE

Technical assistance or specific product questions are handled by our Product Managers who specialize in both paint and non-paint products. Special requests can be faxed to our toll-free fax number at 1-800-921-0065. Orders can be called in to Customer Service at 1-800-227-0196, faxed to 1-800-921-0065, or placed online at [www.aervoe.com](http://www.aervoe.com).

## AERVOE PRODUCT CATEGORIES

See Aervoe's other product catalogs for Safety, Traffic Control, Outdoor Products, and Portable Appliances.

[www.aervoe.com](http://www.aervoe.com)



Construction/Industrial Supply Distribution Network



## **Aervoe Industries Incorporated**

1100 Mark Circle, Gardnerville, NV 89410

(775) 783-3100 • Fax (775) 782-5687

Customer Service (800) 227-0196 • Fax (800) 921-0065

[www.aervoe.com](http://www.aervoe.com) • [mailbox@aervoe.com](mailto:mailbox@aervoe.com)

Warehouses: Gardnerville, NV; Nashville, IL

**For More Than 50 Years... The Professional's Choice**

Distributed by:

